

# OPERATOR USER'S MANUAL



**DPS TERMINAL**

**Model MT1 series**



User manual Easyphoto 2.5.0

English

Rev 2.0

For more information please visit [www.mitsubishiphoto.com](http://www.mitsubishiphoto.com) and [www.easyphtosystem.com](http://www.easyphtosystem.com).

# TABLE OF CONTENTS

<b>1</b>	<b>INTRODUCTION.....</b>	<b>5</b>
1.1	The best choice .....	5
1.2	Description .....	5
1.2.1	Services.....	6
1.2.2	Functions .....	6
1.3	Working Modes .....	7
1.3.1	Kiosk Mode.....	7
1.3.2	Operator Mode .....	7
1.3.3	Order Terminal Mode (Optional) .....	7
1.4	System Users .....	7
1.4.1	End user .....	7
1.4.2	Operator user .....	7
1.4.3	Supervisor user .....	7
<b>2</b>	<b>SYSTEM FUNCTIONS.....</b>	<b>8</b>
2.1	Input of images.....	8
2.1.1	Input images from a memory card .....	8
2.1.2	Input images from a USB device.....	8
2.1.3	Input images from CD/DVD.....	8
2.1.4	Input images via Bluetooth .....	8
2.2	Photography services .....	9
2.2.1	Instant Prints.....	9
2.2.2	DVD/CD Burning .....	9
2.2.3	Compositions.....	9
2.2.4	Photo ID (Optional).....	9
2.2.5	Calendars (Optional) .....	10
2.2.6	Collage (Optional) .....	10
2.2.7	Frames and greetings (Optional) .....	10
2.2.8	Mosaic Poster (Optional).....	11
2.2.9	ONLINE Kioskgifts (Optional).....	11
2.2.10	Easygifts album (Optional) .....	11
2.3	Picture Retouch.....	12
<b>3</b>	<b>SCREEN FLOW.....</b>	<b>13</b>
3.1	Services: What do you want to do? .....	14
3.2	Input of images: Where do you have your pictures? .....	15
3.2.1	Memory Card.....	15
3.2.2	USB pendrive .....	16
3.2.3	DVD/CD.....	16
3.2.4	Bluetooth .....	17
3.3	Selection of images: Picture loading options .....	17
3.4	Instant prints and retouch: What do you prefer? .....	18
3.4.1	Instant prints: 1 copy of all and 2 copies of all.....	19
3.4.2	Additional services: Would you like to burn a dvd or cd? .....	19
3.4.3	Additional services: Would you like to add an indexprint?.....	20
3.4.4	Additional services: select the print finish. ....	21
3.4.5	Order summary.....	21
3.4.6	Retouch: View and adjust my pictures.....	23

3.4.6.1	Red eyes removal .....	24
3.4.6.2	Brightness and contrast .....	24
3.4.6.3	Sepia and black/white .....	26
3.4.6.4	Automatic levels .....	26
3.4.6.5	Zoom and crop .....	27
3.5	Burning DVD/CD .....	28
3.5.1	Selecting photos .....	28
3.6	Compositions .....	29
3.7	Photo ID (Optional) .....	30
3.7.1	Taking the pictures .....	30
3.7.2	Selecting the service .....	30
3.7.3	Selecting the picture source .....	31
3.7.4	Selecting the layout .....	32
3.7.5	Selecting and working with the pictures .....	33
3.7.6	Printing .....	34
3.7.7	Automatic biometrics detection .....	34
3.8	Calendars (Optional) .....	36
3.8.1	Monthly calendars .....	36
3.8.2	Full year calendars .....	38
3.9	Collage (Optional) .....	40
3.10	Frames & Greetings (Optional) .....	41
3.11	Mosaic poster (Optional) .....	42
3.12	ONLINE Kiosk gifts (Optional) .....	43
3.13	Easygifts album (Optional) .....	46
<b>4</b>	<b>ADMINISTRATION .....</b>	<b>53</b>
4.1	System Status .....	54
4.2	Settings .....	56
4.2.1	Main .....	57
4.2.1.1	Installing the system as an Order Terminal .....	59
4.2.1.2	Select Kiosk Languages .....	63
4.2.1.3	Select Country .....	63
4.2.1.4	Date / Time .....	64
4.2.2	User's administration .....	64
4.2.3	Devices .....	65
4.2.3.1	Devices. Photo printer .....	66
4.2.3.2	Devices. DVD/CD burner .....	67
4.2.3.3	Devices. Ticket printer .....	68
4.2.3.3.1	Product barcode settings .....	68
4.2.3.3.2	Order barcode settings .....	69
4.2.4	Services .....	70
4.2.4.1	Prints .....	71
4.2.4.2	Index Print .....	72
4.2.4.3	Photo ID .....	73
4.2.4.4	Calendars .....	74
4.2.4.5	Collage .....	75
4.2.4.6	Frames & Greetings .....	76
4.2.4.7	Mosaic Poster .....	77
4.2.4.8	ONLINE Kiosk gifts .....	77
4.2.4.9	Easygifts album .....	77
4.2.5	Statistics .....	80
4.2.6	Import / export settings .....	82
4.2.7	Screenshots .....	83

<b>5</b>	<b>MT1-ID .....</b>	<b>84</b>
5.1	Available services.....	84
5.2	Working modes .....	84
5.3	Printer model.....	84
<b>6</b>	<b>Recovery USB and easyphoto backups .....</b>	<b>85</b>
6.1	Creation of the recovery tool in a USB drive .....	85
6.2	Using the recovery tool.....	88
6.2.1	<i>Software update .....</i>	<i>89</i>
6.2.2	<i>Create Partial backup.....</i>	<i>89</i>
6.2.3	<i>Create Total Backup.....</i>	<i>89</i>
6.2.4	<i>Restore Partial Backup.....</i>	<i>90</i>
6.2.5	<i>Restore Total Backup.....</i>	<i>90</i>
6.2.6	<i>Shutdown.....</i>	<i>90</i>
<b>7</b>	<b>ACTIVATING ADDITIONAL LICENSES .....</b>	<b>91</b>
7.1	Register and Getting the Activation KEY .....	91
7.2	Activating licenses in the easyphoto application. ....	92
<b>8</b>	<b>TICKET PRINTER INSTALLATION (OPTIONAL) .....</b>	<b>94</b>
<b>9</b>	<b>CONTACT.....</b>	<b>95</b>

# 1 INTRODUCTION

## 1.1 The best choice

Easyphoto is the most suitable photographic equipment for the specific necessities of every professional.

It has a flexible system of software which allows to set it in function of the real purposes and necessities of each business.

It's a compact equipment and it is very easy to use. Easyphoto is supplied with an independent high quality printer which allows the professional to take the control of printing.

Easyphoto has been developed to provide an easy handling in every respect.

For starting to use Easyphoto, it is only necessary to plug in the terminal.

The software is very simple, Easyphoto can be used by any user with the touch screen.

Easyphoto can be located in any place due the compact design.

The printer can be placed next to the equipment or separately.

## 1.2 Description

Easyphoto is an "easy to use" system, providing instant digital prints and other services. It is used directly by the customer, who can input and manage photographs and pay for all the requested services.

Easyphoto enables customers to input their images in the device (using memory card, USB, CD/DVD), see, select, retouch and print the desired photographs. It is therefore a confidential and a simple self-service system, which the user can order prints, pay for it and obtain them immediately.

The main advantage of this system is the possibility of seeing all the pictures, and printing only the desired.

The MT1 systems are compatible with 3 different MITSUBISHI ELECTRIC dyesub printers:

- **MT1E.** These systems are obsolete and no longer marketed. They formerly supported the CP9550DWS.
- **MT1E-EVO.** This system supports the old CP9550DWS model and the new CPK60DWS printer.
- **MT1-ID.** This system only supports the CPD70DW-U model.



### NOTE

The MT1-ID system is an easyphoto system with reduced functionalities. The complete information about this system can be found at chapter 'MT1-ID' of this manual

Easyphoto is not only able to develop digital pictures; it also provides a range of services and functions related to the world of digital photography, which are described below:

### 1.2.1 Services

- **Copies:** instant printing of the photographs brought by the customer to the shop in a digital format.
- **DVD/CD Burning:** storage of the client's photographs on a CD-ROM or DVD-ROM.
- **Compositions:** easy way to print ID pictures or wallet pictures using special layouts.
- **Index print:** provides the client with future copies thanks to an index print with all the photographs in miniature.
- **Photo ID (OPTIONAL):** to offer professional Photo ID service. This option needs the purchase of an additional license to be activated.
- **Calendars (OPTIONAL):** to offer customized calendars. This option needs the purchase of an additional license to be activated.
- **Collage (OPTIONAL):** to offer collage compositions with different images. This option needs the purchase of an additional license to be activated.
- **Frames and greetings (OPTIONAL):** to offer decorated frames and greeting cards. This option needs the purchase of an additional license to be activated.
- **ONLINE Kiosk gifts (OPTIONAL) :** end customers can print out orders prepared at home using the online application available at [www.kioskgifts.com](http://www.kioskgifts.com)
- **Easygifts album (OPTIONAL):** to offer automatic creation of EasyGifts Album®.



#### NOTE

All the licenses marked optional are included in the MT1-EVO system.

In the first MT1 systems, all the licenses marked optional must be purchased separately.

The Order Terminal (O.T.) operating mode is also included in the MT1-EVO. In the first MT1 systems it must be purchased separately.

Contact your supplier to purchase the licenses if necessary. Also see the chapter entitled "ACTIVATE ADDITIONAL LICENSES."

### 1.2.2 Functions

- **Zoom and Crop:** Allows the picture to be trimmed in a portrait and landscape format.
- **Rotation:** Allows the picture to be rotated.
- **Red eyes effect:** Allows removing the red eyes effect.
- **Black/ white and sepia effects:** Allows including these effects.
- **Brightness and contrast:** Allows increasing or decreasing these picture properties.

## 1.3 Working Modes

(In order to see how to activate any of the modes explained below, please see the 'Settings' chapter)

### 1.3.1 Kiosk Mode

Kiosk mode is the mode intended to be used by the end user who wants to purchase services. The orders done when working with this mode need to be validated by the shop assistant with an operator password.

### 1.3.2 Operator Mode

Operator mode is the mode intended to be used by the shop assistant. The main difference between both kiosk and operator mode is that the orders in the second one do not need to be validated with an operator password.

### 1.3.3 Order Terminal Mode (Optional)



#### NOTE

Order Terminal is an additional licence. Contact with your dealer to acquire this licence. See also 'ACTIVATING ADDITIONAL LICENSES' chapter. The MT1-EVO system already includes this licence from the 2.4. software version.

Order Terminal mode is the mode intended to be used by the end user, like in Kiosk mode, but in this case the easyphoto system doesn't use a local printer. The easyphoto is connected to a Flexilab system (Click5000): this means that many of the printing sizes of the Flexilab system are available for the end user.

The MT1 terminal needs to be connected to the Click5000 through a network cable.

## 1.4 System Users

Easyphoto is characterized for the possibility to be operated by 3 types of users which are listed below:

### 1.4.1 End user

The end user or shop customer uses the system by himself when it is set in both Kiosk or Order terminal modes.

### 1.4.2 Operator user

Operator is any of the photo shop staff using the system when is set to work in Operator Mode. The Operator user is responsible for the maintenance and operation of the machine. Easyphoto can have a maximum of 5 operator users.

### 1.4.3 Supervisor user

One of the five operator users is the supervisor user. Supervisor user can modify critical options like passwords, available services, prices, etc... because he/she has access to the settings.

## **2 SYSTEM FUNCTIONS**

### **2.1 Input of images**

It is necessary to input images in Easyphoto to perform any service.  
There are many ways of transferring images which are listed below:

#### **2.1.1 Input images from a memory card**

Easyphoto accepts images from all normal memory cards, like SD, MMC, Compact Flash, xD, MemoryStick...

For transferring images from a memory card:

1. Press the indicated button.
2. Insert the memory card and press the "Next" button.

The system detects it automatically.

#### **2.1.2 Input images from a USB device**

Easyphoto accepts images from USB devices.

For transferring images from a USB pendrive:

1. Press the indicated button.
2. Insert the USB device and press the "Next" button.

The system detects it automatically.

#### **2.1.3 Input images from CD/DVD**

Easyphoto accepts images from CD and DVD.

For transferring images from a CD/DVD:

Press the indicated button.

The reader opens automatically.

Insert the CD/DVD and push the tray or press the "Next" button.

The system detects it automatically.

#### **2.1.4 Input images via Bluetooth**

Photographs which are saved in mobile telephones and PDAs can be transferred to easyphoto via Bluetooth.

For transferring images via Bluetooth:

1. Select the images of the Bluetooth device.
2. Send the images to "Easyphoto". ["MT1"]

Sometimes the Bluetooth devices ask for a password. Requested password is "1234". The system receives the images and shows them.



## 2.2 Photography services

### 2.2.1 Instant Prints

The pictures which have previously been inserted in Easyphoto can be printed in different formats according to the client's choice.

The possible paper formats offered by Easyphoto are as follows:

Media Size	Formats
10x15 cm (4x6")	10x15 cm (4x6") The most frequently used format for standard prints.
13x18 cm (5x7")	13x18 cm (5x7") This is used in some countries as a standard print size or for enlargements.
15x20 cm (6x8")	15x20 cm (6x8") Used for enlargements.
15x20 cm (6x8")	13x18 cm with white border.
15x23 cm (6x9")	10x15 x2 cm (4x6 x2 ") The printer cuts the paper in 2 parts
15x23 cm (6x9")	11.5x15 x2 cm (4,4x6 x2 ") This is a nice option that fits with digital cameras pictures aspect ratio. The printer cuts the paper in 2 parts.
15x23 cm (6x9")	13x18 cm with white border.
15x23 cm (6x9")	15x20 cm (6x8") Used for enlargements.
15x23 cm (6x9")	15x21 cm (6x8,5") Used for enlargements.
15x23 cm (6x9")	15x23 cm (6x9") Used for enlargements.



#### NOTE

The available formats depend on the formats selected in settings, and they are based in the detected media size.

Not all the printer models support all the printing sizes. The CPK60DWS printer uses the special ink roller rewinding technique to produce the 10x15 with the same consumable that is used to print the 15x20. Ask your dealer for more information about this.

In Order Terminal mode, the list of available formats depends on the Flexilab system

### 2.2.2 DVD/CD Burning

The client's images can be burned on a CD-ROM or DVD-ROM. The images are always copied in their original format so that their resolution does not change, except when they are changed through Crop/zoom option.

### 2.2.3 Compositions

The customer can prepare a composition of pictures using only one picture. It's possible to choose the layout from a maximum of 4 different layouts available, and those depending on printer media size. The MT1-ID system does not have this service.

### 2.2.4 Photo ID (Optional)



#### NOTE

Photo ID is an additional licence. Contact with your dealer to acquire this licence. See also 'ACTIVATING ADDITIONAL LICENSES' chapter. The MT1-EVO system already has this licence.

This service allows printing a composition of photos for identity cards, passports, wallet size portraits, etc... and it's only available for the operator. Even in Kiosk mode, this service is

protected under password, and needs to be used by the shop-staff. Easyphoto offers different compositions among which the operator may choose one.

The advantage of using this service instead of basic Compositions service for ID purposes is the fastest way (express workflow) to get the pictures from the source, the possibility to mix 2 different pictures in the same print, the use of biometrics masks, the direct print button, the refresh button for continuous shooting and printing, the better accessibility to different tools to adjust zooming, cropping and pan of the picture, and the automatic biometrics detection.

The automatic biometrics detection processes the picture of the customer and helps the operator to fit the face inside the biometrics mask that follows each country regulations. This saves time to the operator to get the right ID print.

## 2.2.5 Calendars (Optional)



### NOTE

Calendars is an additional licence. Contact with your dealer to acquire this licence. See also 'ACTIVATING ADDITIONAL LICENSES' chapter. The MT1-EVO system already has this licence.

This service allows printing a customized calendar of the whole year in separate prints (one per month) or the whole year in one print.

This service is available in all working modes.

## 2.2.6 Collage (Optional)



### NOTE

Collage is an additional licence. Contact with your dealer to acquire this licence. See also 'ACTIVATING ADDITIONAL LICENSES' chapter. The MT1-EVO system already has this licence.

This service allows printing a composition of several pictures of the customer (in a decorative manner) over a selected a background.

This service is available in all working modes.

## 2.2.7 Frames and greetings (Optional)



### NOTE

Frames and greetings is an additional licence. Contact with your dealer to acquire this licence. See also 'ACTIVATING ADDITIONAL LICENSES' chapter. The MT1-EVO system already has this licence.

This service allows printing a picture into a decorated frame with some additional editable text.

This service is available in all working modes.

## 2.2.8 Mosaic Poster (Optional)



### NOTE

Mosaic Poster is an additional licence. Contact with your dealer to acquire this licence. See also 'ACTIVATING ADDITIONAL LICENSES' chapter. The MT1-EVO system already has this licence.

This service allows printing a poster composed by several sheets of paper. There are different mosaic poster sizes depending on the available printing sizes.

This service is available in all working modes.

## 2.2.9 ONLINE Kiosk gifts (Optional)



### NOTE

ONLINE Kiosk gifts is an additional licence. Contact with your dealer to acquire this licence. See also 'ACTIVATING ADDITIONAL LICENSES' chapter. The MT1-EVO system already has this licence.

The end customer can print orders prepared at home using the online application found at [www.kioskgifts.com](http://www.kioskgifts.com).

At [www.kioskgifts.com](http://www.kioskgifts.com) customers can order different types of products such as calendars, greetings cards or albums from any PC or MAC, save the order on a digital card or USB drive and take it to the Kiosk where it will be printed.

## 2.2.10 Easygifts album (Optional)



### NOTE

Easygifts album is an additional license. Contact your supplier to purchase the license. Also see the chapter entitled "ACTIVATE ADDITIONAL LICENSES". The MT1-EVO system already has this license.

The product generated by the EasyGifts Album service is comprised of a set of pages prepared for mounting an 'EasyGifts Album'.

Ask your distributor for more information about the solution and references of the MITSUBISHI 'EasyGifts Album' product.

Service available in all operating modes.

## 2.3 Picture Retouch

This is a range of tools offered to the customer in order to be able to make adjustments to the pictures in the development services.

- **Black and white:** Transforms colour images to black and white.
- **Sepia:** Transforms colour or black and white images to sepia.
- **Brightness and contrast:** To increase or decrease the brightness and contrast in order to improve the quality of the image.
- **Zoom and crop:** Uses the "+" and "-" icons to decrease or increase the cropping area. Use the arrows to move the image.
- **Automatic:** Automatic adjustments to improve the quality of the image. Very useful for pictures taken by non professional photographers.
- **Red eyes removal:** Allows to remove the red eyes effect from the images.
- **Rotate:** Allows the image to be rotated.
- **Restore:** Restores the original image as it was before the changes.

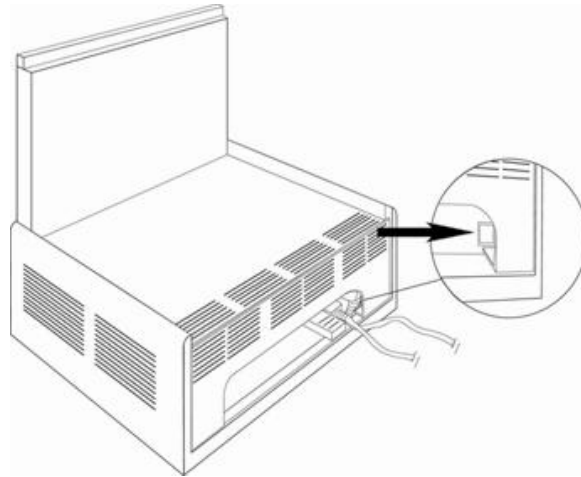
### 3 SCREEN FLOW

For accessing to the services of Easyphoto:

#### **i** NOTE

- Before switching on the equipment, make sure that there is no additional USB storage devices connected. It may cause problems when detecting the different devices later.

1. Touch the red button to switch on the Easyphoto terminal.



Access to services by touching the screen with your finger.

The flow of the screens and the meaning of each one are explained on this chapter.

- When the system is inactive for 60 seconds in the main screen, appears a screensaver on the monitor.
- When the monitor is touched, Easyphoto can be used again.
- In Kiosk mode, if the system is left at any point of the workflow, after 100 seconds it appears a message asking for confirmation. If the message is not answered, the system closes the current session and goes back to main screen.

#### **i** NOTE

- PLEASE ALWAYS SWITCH OFF THE SYSTEM USING SHUTDOWN SOFTWARE FUNCTION, AVAILABLE AT ADMINISTRATION SCREEN. USING BACK PANEL RED BUTTON TO SHUTDOWN THE SYSTEM IS NOT RECOMMENDED.

### 3.1 Services: What do you want to do?

Once the Easyphoto has been switched on, you can see the first screen:



On this screen you can:

- Use the arrows to select the desired language.
- Press the “Price list” button to display the price list.
- Access to the services of Easyphoto.

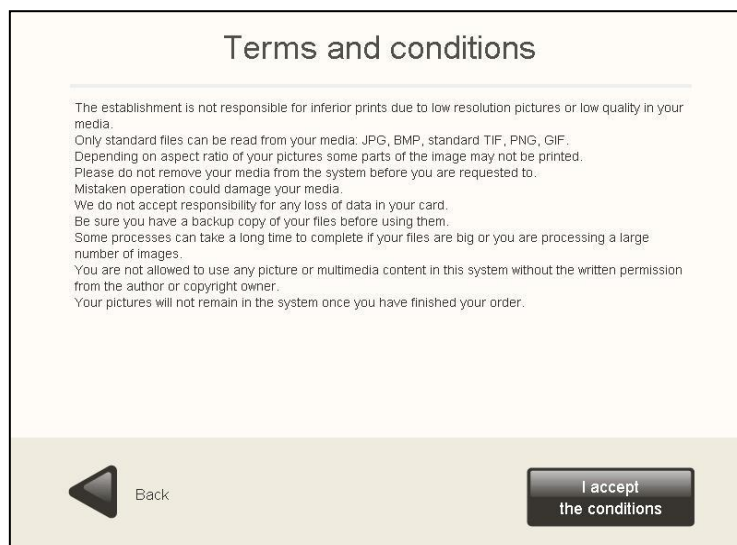
For accessing to any service:

1. Press the required Easyphoto service (Copies, DVD/ CD burning, Compositions, Photo ID...). Photo ID software is only visible in Operator mode. See Photo ID chapter for more details.
2. Press “I accept the conditions”.



#### NOTE

It is strongly recommended to keep enabled the “Terms and conditions” screen when the system works in Kiosk mode and is being used by end customers.



## 3.2 Input of images: Where do you have your pictures?

Once any service has been selected, the following screen is displayed:



- Choose the option in which your images are saved.

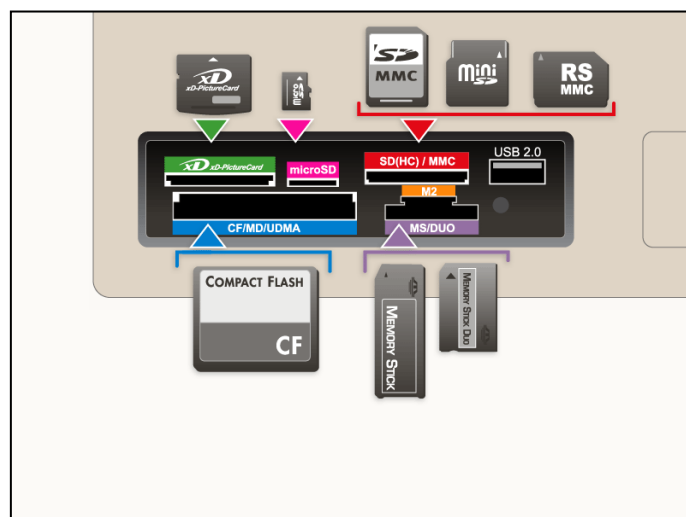
The system can open only these kinds of picture files: JPG, BMP, TIF, PNG and GIF.

### 3.2.1 Memory Card

If your images are saved in a memory card:

1. Press the "Media card" button.

The following screen appears, indicating how and where to introduce the memory card.



Introduce the memory card as indicated on the screen.

Press "Next".

### 3.2.2 USB pendrive

If your images are saved in a USB pendrive:

1. Press the "USB pendrive" button.

The following screen appears, indicating how and where to introduce the USB pendrive.



Introduce the USB pendrive as indicated on the screen.

Press "Next".

### 3.2.3 DVD/CD

If your images are saved in a DVD/CD:

1. Press the "DVD/CD" button.

The device opens automatically.

The following screen appears, indicating how and where to introduce the CD/DVD.



Insert the DVD/CD as indicated on the screen.

Press "Next" or push the tray.

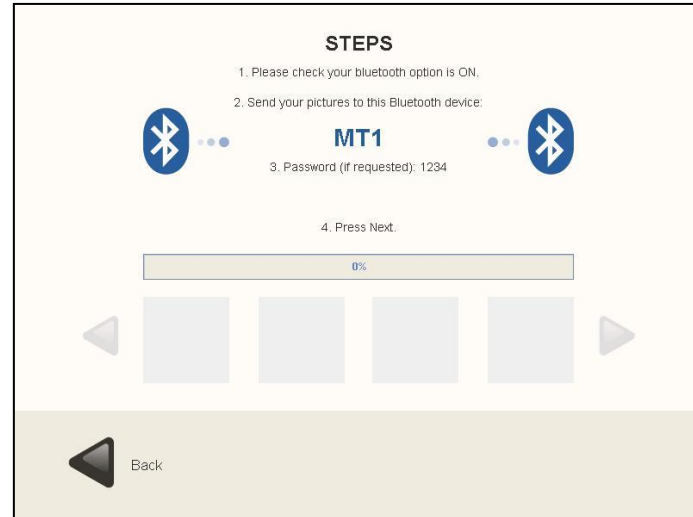


### 3.2.4 Bluetooth

If your images are saved in a Bluetooth device:

1. Press the "Bluetooth" button.

The following screen appears, indicating how to transfer the images.

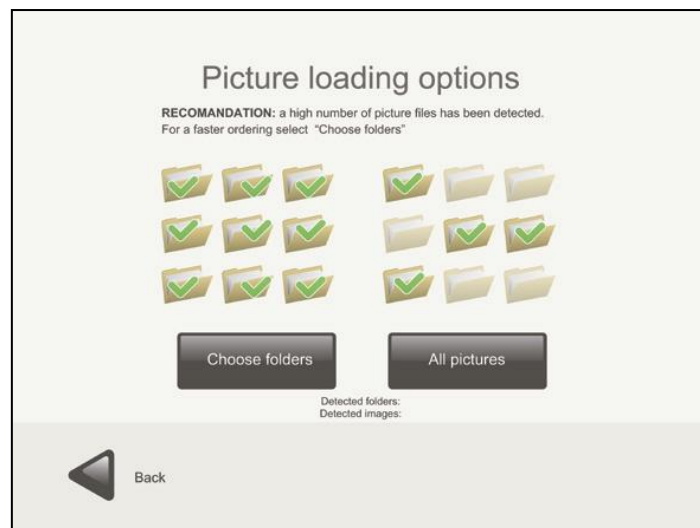


Transfer the images as indicated on the screen.

Press "Next".

### 3.3 Selection of images: Picture loading options

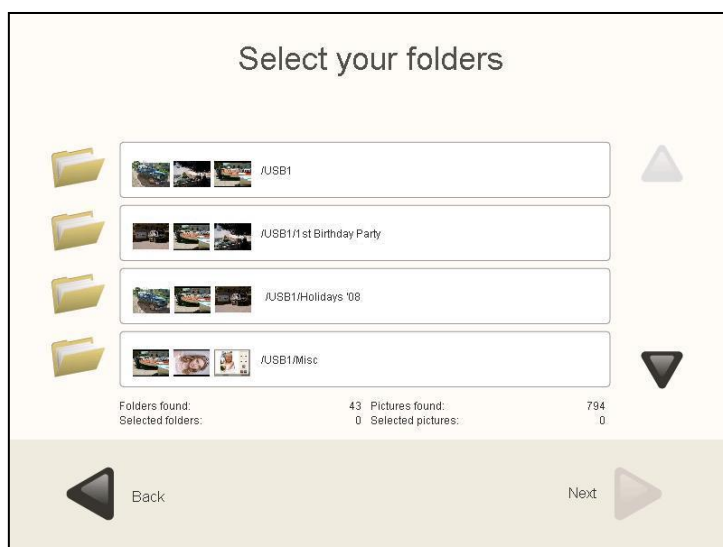
Once the pictures from the source have been correctly detected, a new screen is displayed:



You can choose:

- "Choose folders" to select the folders where you have the pictures that you want to use. This option is useful to avoid spending too much time loading hundreds of pictures.
- "All pictures" to select all the folders and images detected.

If "Choose folders" is selected, a new screen is displayed:



1. Use the arrows to navigate through all the folders. Every folder shows a sample of pictures contained in the folder.
2. Press the desired folder or folders to select them.

For deselecting folders:

- Press the selected folders for deselecting.

Press "Continue".

### 3.4 Instant prints and retouch: What do you prefer?

Once the folders containing pictures have been selected, you have the following possibilities:

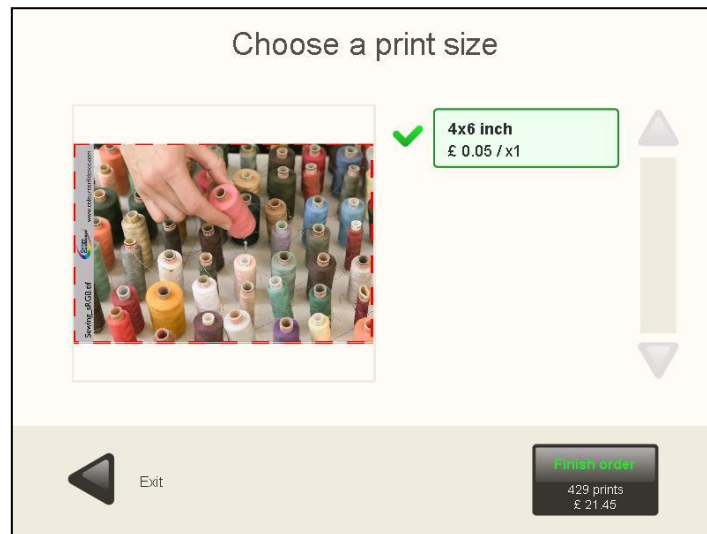


On this screen, you can choose:

- **1 copy of all:** Select it to print one copy of all detected pictures in the selected folders. This is the fastest option when there is no intention of retouching or previewing the pictures. Many customers want to print all the pictures contained in the source, and this option saves time for them.
- **2 copies of all:** Same than before but printing 2 copies per each picture.
- **Choose my photos:** Select it to view, select and retouch the detected pictures.

### 3.4.1 Instant prints: 1 copy of all and 2 copies of all

Once the “1 copy of all” or “2 copies of all” buttons have been selected, a new screen is displayed:



1. Press the button/ buttons which indicates the desired sizes to select them. Also these buttons shows the prices.

The green tic indicates the selected print size.

Press the “Finish order” button for printing the order. This button also indicates the number of copies and the total price of the order.

For changing the size:

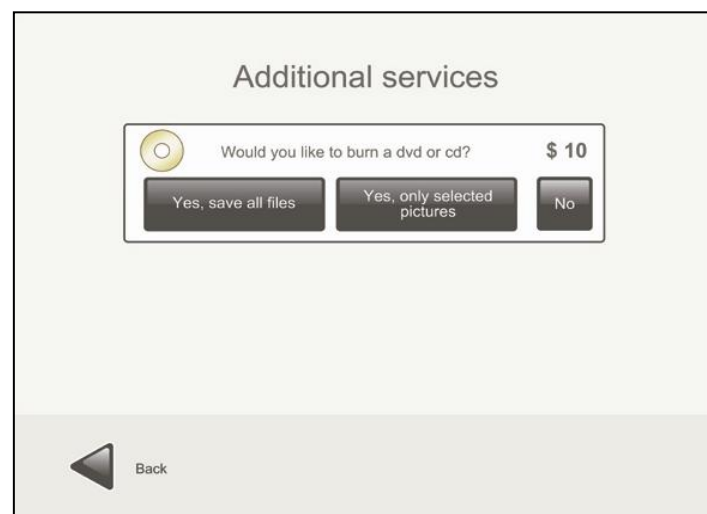
1. Press the selected size for deselecting.

Press the button with the new required size.

The screen shows a sample of the customer pictures. The real print area is shown over the picture, changing each time the customer selects a different print format.

### 3.4.2 Additional services: Would you like to burn a dvd or cd?

This option appears after pressing the “Finish order” button. Choose this option if you want to burn a DVD or CD. On this screen you can see the price of burning a DVD/CD.



- Select “Yes, save all files” if you want to save all files.

**i NOTE**

If "save all files" is selected:

- All the files (movies, mp3, etc...) included in the device will be burned on the CD/DVD.
- The original images will be burned on the CD/DVD and not the edited ones.

- Select "Yes, only selected pictures" if you want to save only the selected pictures.

**i NOTE**

If "Yes, only selected pictures" is selected, the edited images will be burned on the CD/DVD in the root of the DVD/CD, and also the original ones (keeping file structure). For the edited pictures, the original filename will be changed and the picture will be saved as BMP.

- Select "No" if you do not want to burn a CD/DVD.

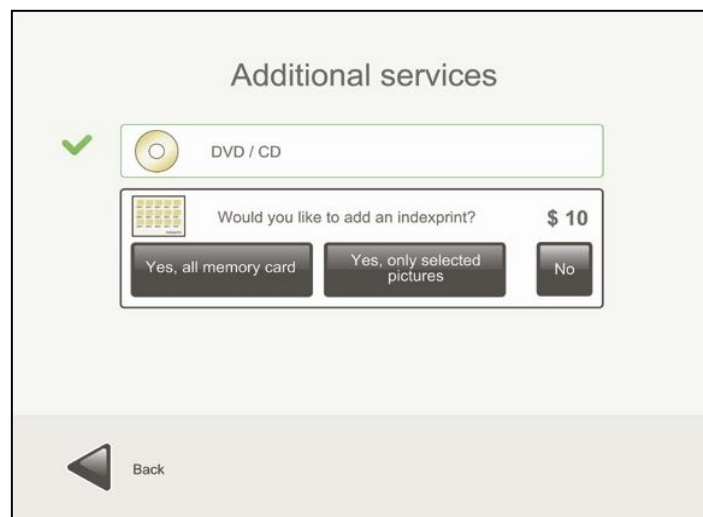
**i NOTE**

If the "Burning DVD/CD services is disabled this additional service won't be available.

### 3.4.3 Additional services: Would you like to add an indexprint?

This option appears after answering "Would you like to burn a dvd or cd?"

On this screen you can see the price of adding an indexprint and DVD/CD burning services, and the customer choice.



Choose "Would you like to add an indexprint?" if you want to add an indexprint.

- Select "Yes, all memory card" if you want to add an indexprint with all the images.
- Select "Yes, only selected pictures" if you want to add an indexprint with only the selected images.
- Select "No" if you do not want to add an indexprint.

**i NOTE**

Only one sheet of paper is used to print an indexprint. When there is not enough space to show all selected pictures in the indexprint, a summary of all pictures is shown.

### 3.4.4 Additional services: select the print finish.

This option is shown after responding to the question "Do you want to add an indexprint?".

In this screen, customers are asked whether they want a glossy or a satin paper print finish.

This will only be shown when the printed installed is a CPD70 or a K60, if the equipment is configured to show that option.

**Additional services**

✗ DVD/CD burning

✗ Index print

Please, chose the finishing for printing:

Matte paper    Glossy paper

Back

### 3.4.5 Order summary

After answering "Would you like to add an indexprint?" the following screen is showed:

**Order Summary**

1	record a dvd/cd	\$ 9.00
1	Index Copy (4x6 inch)	\$ 0.60
30	copies (4x6 inch)	\$ 3.60
<b>Price</b>		<b>\$ 13.20</b>

VAT included.

Next

This screen lists all the services requested up to this moment and their cost.

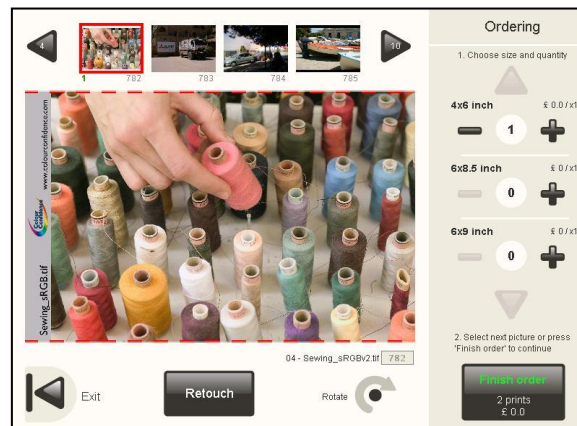
- Press "Next" to confirm the order summary. In Kiosk mode an screen keypad is shown: it's necessary to validate the order by entering the operator password.  
It starts the process of printing and the following screen is showed:



In this screen is possible to see the progress of several services execution. There is a possibility of pausing the printing service (not the DVD burning) by pressing both top corners and entering the operator password. Then, a new screen is shown where you can choose between cancel the order or retry (continue). This order status screen is also automatically shown when a critical error occurs: if the operator can recover the system from the error (when the systems runs out of media, or the printer is accidentally disconnected, as instance), he can try to press 'retry' button to allow the order execution going on.

### 3.4.6 Retouch: View and adjust my pictures

Once the “View and adjust my pictures” button has been selected, a new screen is showed:



Choose this option to retouch the selected image before printing.

1. Use the arrows which are on the top of the screen to select the image.

Choose the size and quantity.

You can see the price.

Press “Rotate” if you need to rotate the picture view.

#### **i** NOTE

The original picture is not rotated; this is only a ‘preview’ rotation. Even when the rotated picture is used for Retouch operations, the original picture won’t be rotated. This is noticeable when you rotate a picture, retouch it and then burn it into a DVD. The picture in the DVD shows retouch operations, but preserves original rotation.

Press “Retouch” to retouch the image.

Once is pressed “Retouch”, you can see the following screen where you can select the different options of retouching.



The function of each option is explained in point 2.3 (‘Picture retouch’).

**NOTE**

There is a limitation in the number of images allowed to be changed by retouch functions, depending on the size of the picture. When the limit is reached, the customer sees a warning message under the main picture of the Ordering screen.

Press "Finish order" to print.

In this moment the screens explained from point 3.4.2 (Additional services: Would you like to burn a dvd or cd?) will be displayed.

### 3.4.6.1 Red eyes removal

Once the "Red eyes removal" button is pressed, the following screen is showed:



For removing the red eyes effect:

1. Press the "Remove" button, as many times as you need until you see a nice result.  
Press the "Keep press to compare" button to display the original image without changes.  
Press the green tic to save the changes.
- Press the red cross to not remove the red eyes effect and escape this screen.

### 3.4.6.2 Brightness and contrast

Once the "Brightness and contrast" button is pressed, the following screen is showed:





For increase or decrease brightness and contrast effects:

1. Press the “-/+ brightness” button.
2. Press the “-/+ contrast” button.

Press the “Keep press to compare” button to display the original image without changes.

Press the green tic to save the changes.

- Press the red cross to not save the changes and escape this screen.

### 3.4.6.3 Sepia and black/white

Once the “Sepia, black and white” button is pressed, the following screen is showed:



For changing the image to black and white:

1. Press the “Black and white” button.

Press the “Keep press to compare” button to display the original image without changes.

Press the green tic to save the changes.

- Press the red cross to not save the changes and escape this screen.

For changing the image to sepia:

1. Press the “Sepia” button.

Press the “Keep press to compare” button to display the original image without changes.

Press the green tic to save the changes.

- Press the red cross to not save the changes and escape this screen.

### 3.4.6.4 Automatic levels

Once the “Automatic levels” button is pressed, the following screen is showed:



For improving the image automatically:

1. Press “Auto” button

Press the “Keep press to compare” button to display the original image without changes.

Press the green tic to save the changes.

- Press the red cross to not save the changes and escape this screen.

### 3.4.6.5 Zoom and crop.

Once the “Zoom and crop” button is pressed, the following screen is showed:



For increasing or decreasing the image:

1. Use the arrows to select the part of the image you are interested in.

Press “-/+ zoom controls” buttons.

Press the green tic to save the changes.

The images can be cropped in two formats:

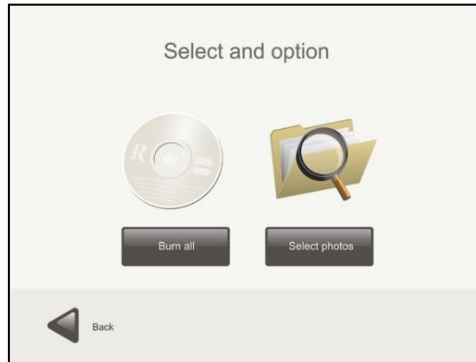
- Portrait.
- Landscape.

For cropping the image:

1. Use the arrows to select the part of the image you want to crop.
  2. Press “Portrait/Landscape” buttons.
  3. Press the green tic to save the changes.
- Press the red cross to not save the changes and escape this screen.

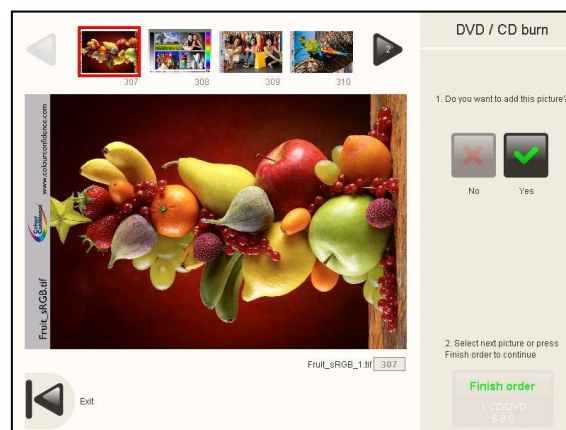
### 3.5 Burning DVD/CD

Once the “DVD/CD burning” service button is pressed, the following screen is showed:



- Press “Burn all” button if you want to burn not only pictures but also all the files found in the original media.  
In this moment the screens explained from point 3.4.2 (Additional services: Would you like to burn a dvd or cd?) will be displayed.
- Press “Select photos” if you want to burn it with the selected pictures.

#### 3.5.1 Selecting photos



Once the “Select photos” button is pressed, the following screen is showed:

For selecting the images:

1. Use the arrows to display all the images.
2. Press the desired image to select it.

Press “Yes” to copy it and “No” to deselect it.

- Press “Back” button to escape this screen.

Press “Finish order” to burn it.

In this moment the screens explained from point 3.4.3 (Additional services: Would you like to add an indexprint?) will be displayed.

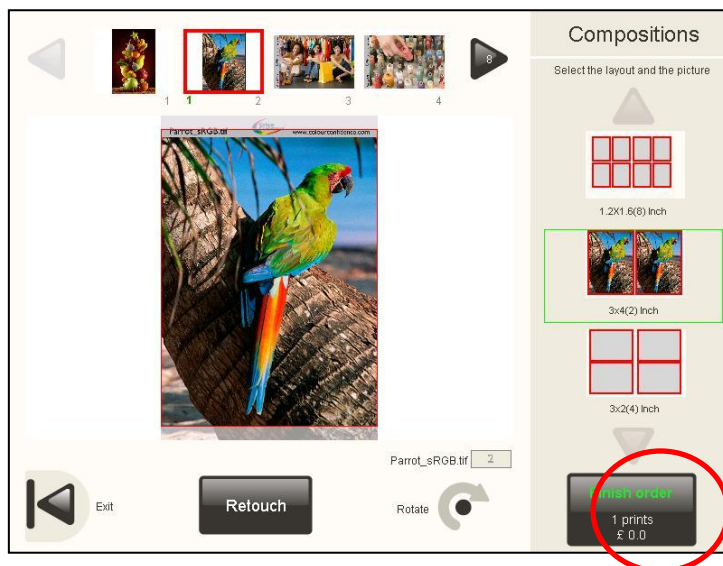


#### NOTE

- The DVD/CD burning service doesn't allow using a DVD/CD as a picture source. This one is disabled.

### 3.6 Compositions

Once the “Compositions” button is pressed, the Compositions service is started. The customer is asked to insert the picture source and after following the usual workflow, the pictures can be seen at the Ordering screen.

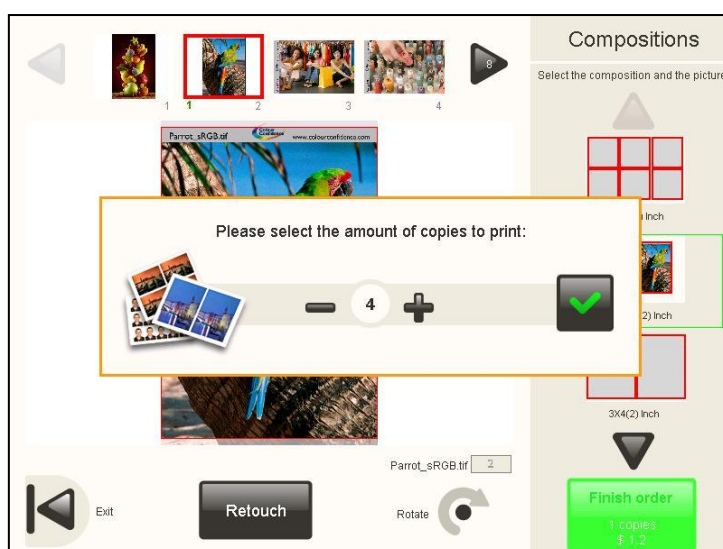


In the right panel of the screen a maximum of 4 different layouts can be shown. The available layouts depend on the selected country (in settings of the system) and the paper size of the printer.

Only one picture can be selected, and also only one layout can be chosen by the end customer. When the picture is selected, it's automatically allocated in the selected layout to the right panel.

In the center area is possible to check the cutting area of the layout rectangle. In order to fit better the picture inside every frame or rectangle, sometimes is better to rotate the picture.

After pressing the “Finish order” button, a pop-up will appear in order to determine the amount of copies desired



## 3.7 Photo ID (Optional)

It's highly recommended to follow the next steps to make an ID service.

### 3.7.1 Taking the pictures

Before selecting the PhotoID service at the main screen, the operator should take the pictures to the customer.

When using a digital camera with an USB cable connected to easyphoto:

- If an USB switch is being used between the camera and the easyphoto, this must be switched to the position where the connection between both devices is disabled, in order to allow the camera to take pictures.
- When an USB switch is not being used, the digital camera USB cable should be disconnected from the easyphoto.

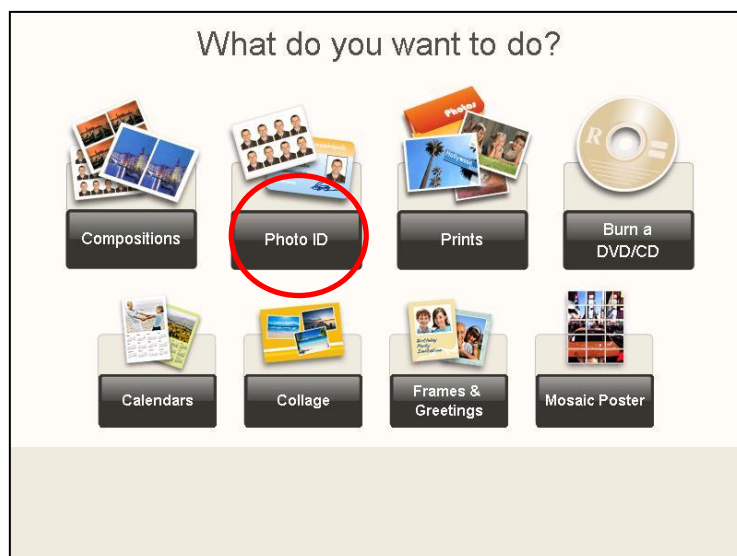


#### NOTE

The behaviour of the camera when the USB cable is connected or disconnected may vary depending on the camera brand/model used. Also, the use of an USB switch is not always necessary. Please ask for more information to your dealer or installer.

### 3.7.2 Selecting the service

Once the "Photo ID" button (in operator mode) is pressed, or the hidden area between language selection (flags) and prices is pressed, the Photo ID service is started.





### 3.7.3 Selecting the picture source

After this, depending on the system setup, it's necessary to follow the source selection workflow or it can be avoided if the operator is using always the same digital picture files source (see the Administration and Settings chapter for more information). As instance, if the operator is using always the same digital camera connected through USB cable to the easyphoto, this can be indicated in settings and the application won't ask the operator where the pictures must be read from. It will search the pictures from the camera directly.

There are several picture sources available: Digital Memory Card, USB memory device (both using the media card reader of the easyphoto system) and USB connection with digital cameras.



#### NOTE

The most common USB modes used by the digital cameras are Mass Storage and PTP connection.

PTP connection works better when there are only a few pictures into the camera memory: it's recommended to empty the camera memory after every session when using the PTP connection. There must be at least 1 picture in the camera in order to be able to read pictures from it, too.

In order to know about each camera brand/model PTP compatibility, please check the camera specifications.



When using a PTP or Mass Storage mode compatible Digital Camera, the operator is requested to connect it as it's shown in the next picture.

If an USB switch is being used between the camera and the easyphoto, now it must be switched to the position where the connection between both devices is active. When an USB switch is not being used, the digital camera USB cable should be connected to the easyphoto.

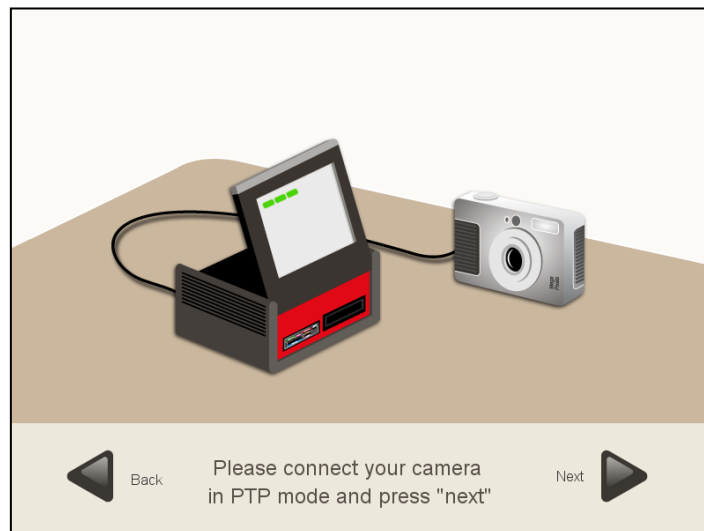
When using a PTP camera, this will detect now the connection with the easyphoto system and will change to picture source mode.



#### NOTE

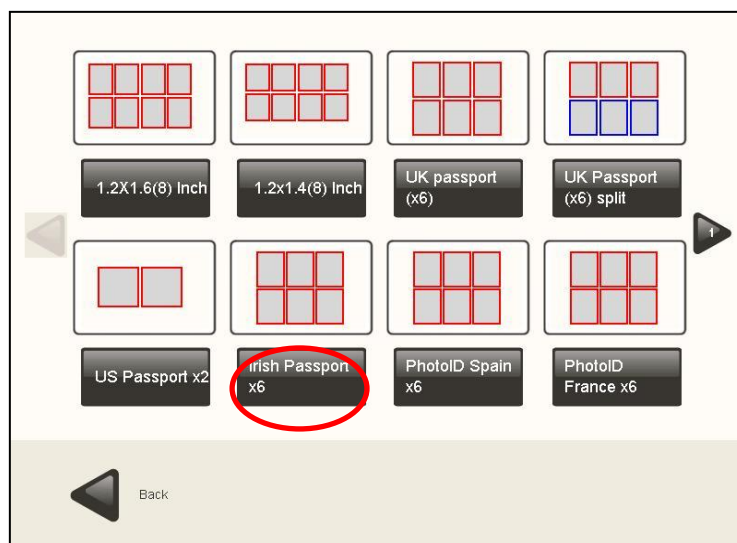
Please plug the camera in the rear USB port from your MT1 system.

In most of the cameras using the Mass Storage mode, they have to be manually switched to this mode at this time.



### 3.7.4 Selecting the layout

Afterwards, the layout must be chosen. There are two kind of layouts, standard and split. Split layouts (using two different colours) allow mixing two different pictures.



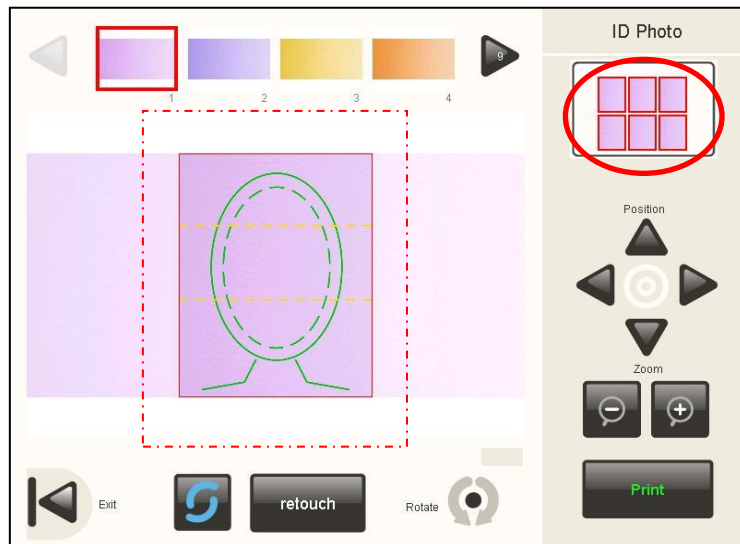


After choosing the layout, the Photo ID screen is shown.

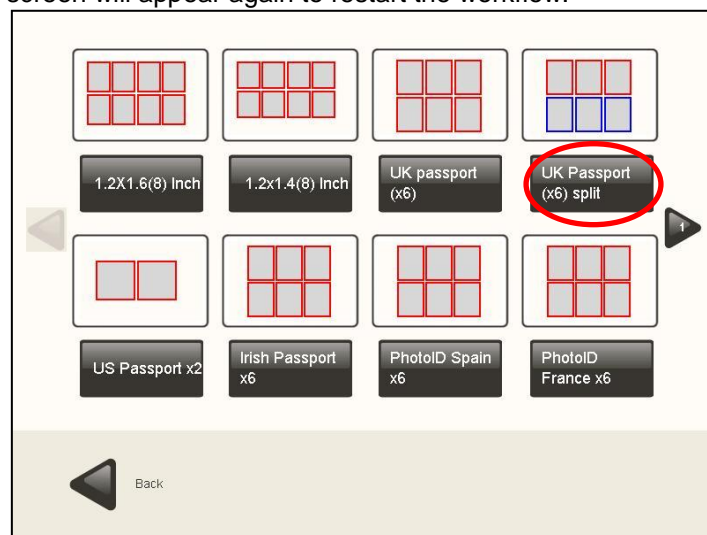
### 3.7.5 Selecting and working with the pictures

In the top area, the pictures read from the source are shown. When selecting any of them, the picture will be loaded to be shown in the central area.

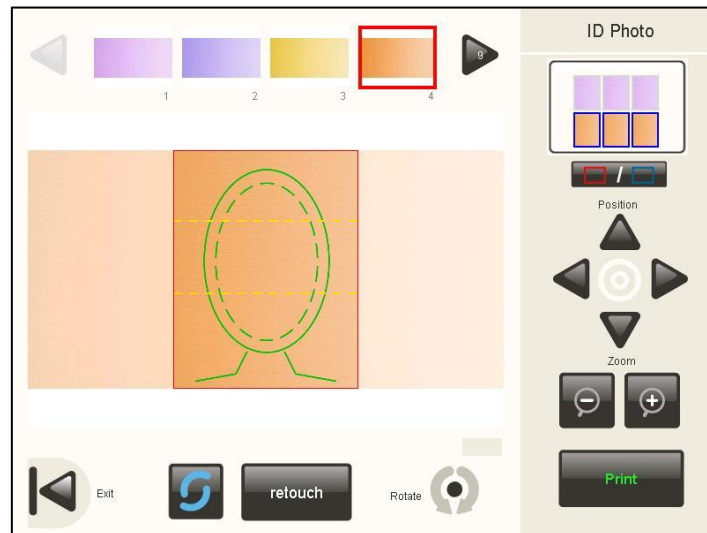
In this screen, it's also possible to change the layout by clicking on the preview placed on the top-right corner.



The select layout screen will appear again to restart the workflow.

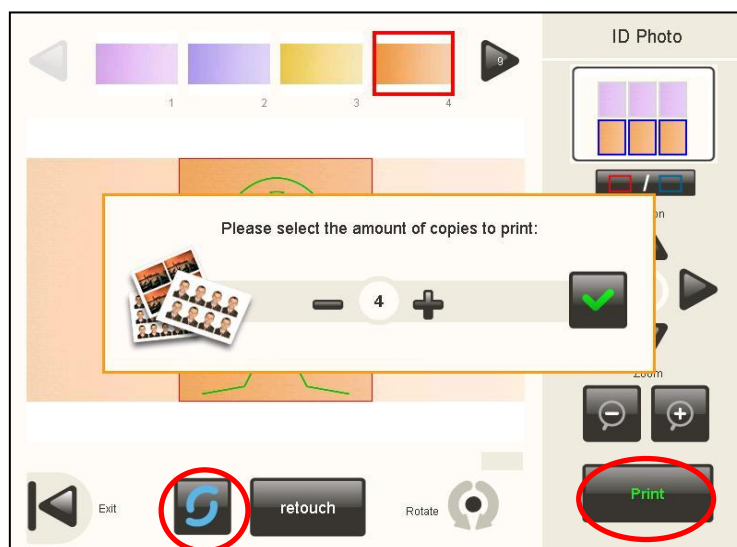


Once in the Photo ID screen again, it's possible to select another picture.



### 3.7.6 Printing

After pressing the “Print” button, a pop-up will appear in order to determine the amount of copies desired.



When pressing the refresh button, the latest images from the picture source are reloaded. When using a camera with PTP connection, only the latest 8 images from the device are loaded.

### 3.7.7 Automatic biometrics detection

When automatic biometrics detection is active in the settings (see Administration chapter), it will take some more time and the picture could appear centred and zoomed.

The easyphoto system is applying innovative imaging processing tools to detect the face of the customer and helping the operator of the system to center the picture in the biometrics mask shown in the centre of the screen.

If a picture can not be correctly centred it appears a message under the picture just warning about it.

The cause can be any of the following:

- The eyes of the customer are not clearly visible in the picture
- The top part of the head of the customer is too near the top edge of the picture. Depending on the print rectangle dimensions or aspect ratio, and also on the biometrics mask being used, this distance can vary.
- The customer brings glasses and there is a shiny spot of light over them.
- Some part of the face of the customer is not clearly visible
- The face of the customer in the picture is rotated 90° or more.
- The picture has poor vertical resolution (less than 500 pixel)

Anyway, after automatic detection the picture can be manually adjusted.

In some cases, even if there is not any error message in the screen, the face of the customer is not being centred correctly. If the current layout is not using the official ID or Passport dimensions and aspect ratio, and a biometrics mask is shown, this could be normal. In this case please make final adjustments manually.

You can use several buttons to change:

- Rotation. The picture can be rotated in small amounts in both directions by pressing quickly the rotate button. To change the orientation of the picture (and changing the aspect ratio) to landscape or portrait, please keep pressed the rotate button for a couple of seconds.
- Refresh. This is useful when a compatible USB camera (working as a mass storage device) is connected to the system and the photographer wants to stay working permanently in the PhotoID screen. By pressing the refresh button, the pictures are reloaded from the camera and the last picture taken is shown.
- Zoom.
- Position.

Steps:

1. Select the picture in the top area.

Adjust the picture position to the biometric mask (when available) using the controls.

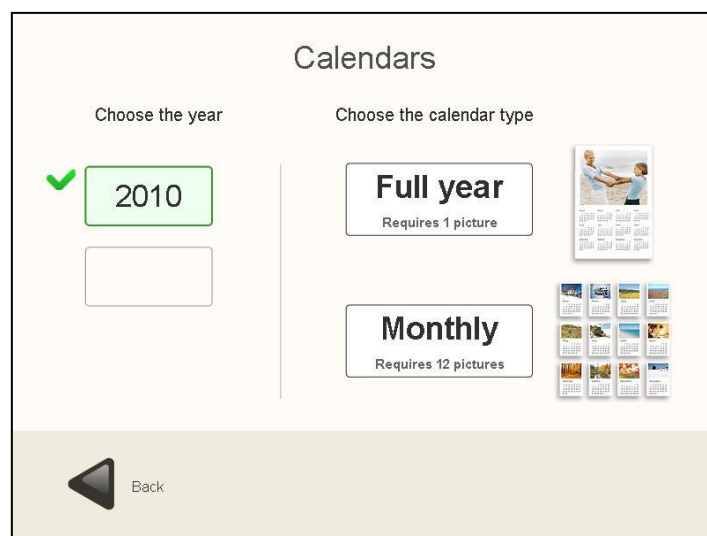
For split layouts, use the group selector button at the top right of the screen before selecting the second picture to be included in current composition.

2. Press "Finish order" each time you want to print a copy of current Photo ID composition.
- Press "Back" button to escape this screen.

In this moment you will see the same screens explained in point 3.4.2. (Additional services: Would you like to burn a dvd or cd?).

## 3.8 Calendars (Optional)

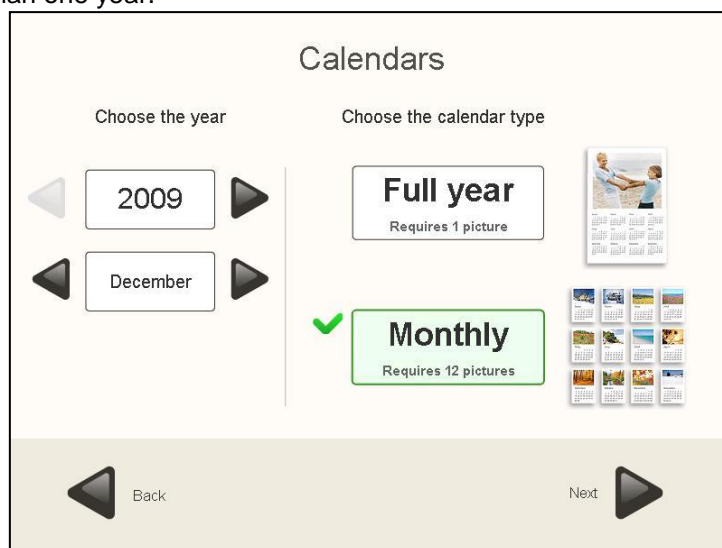
Once the “Calendar” button is pressed, the Calendar service is started.



First, is required to select the year to make the calendar. In the same screen, also the type of calendar (“Full year” or “Monthly”) can be chosen.

### 3.8.1 Monthly calendars

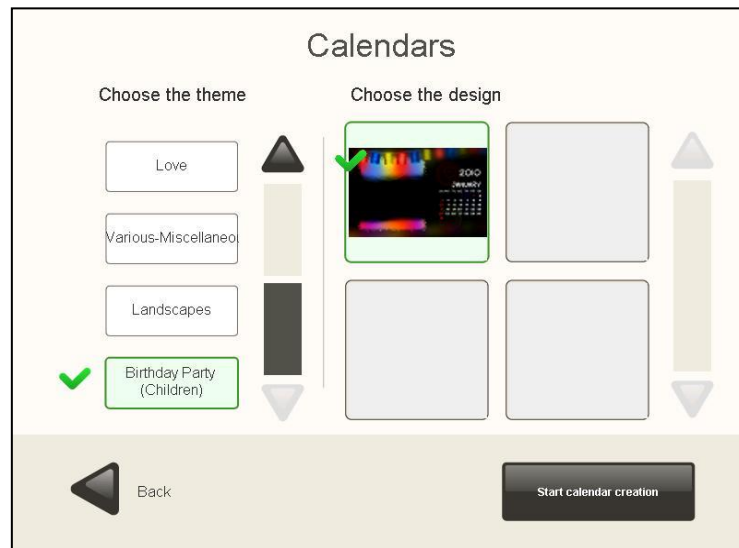
This option makes it possible to create a 12-month calendar using a sheet for each month and including more than one year.



First it's selected the desired year and then the initial month of that year. The system then will automatically calculate the following 11 months.

e.g. A calendar starting with December-2009 will have December-2009 in the first sheet and November-2010 in the last one.

Pressing 'Next', the theme and the design of the calendar can be chosen among several types. Each theme can show several designs to be chosen, too.



Pressing 'Start calendar creation' and the Monthly calendar workflow is started. There is a help guide shown in the right part of the screen.



It's required to select a picture in the top section of the screen in order to combine it with the calendar shown in the central area.

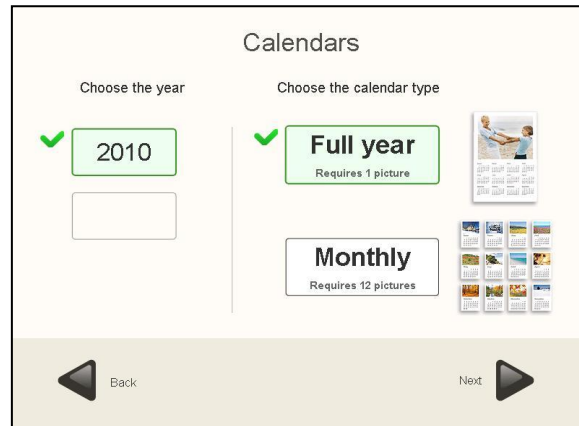
Monthly option uses twelve different photos, one for each month. After selecting the picture for the first month of the year, it's required to use the arrow buttons shown in the part 3 of the help guide, in order to move to the next month, and select later the next picture to be combined.

It is recommended to follow the process in order, month after month, so there won't be any 'empty' month when the operator is about to complete the whole year calendar (it's not possible to use the same photo in two different months). Anyway, a warning will be displayed if one month does not have a picture when pressing 'Next' button in order to proceed with the following steps. Afterwards, the standard workflow is followed.

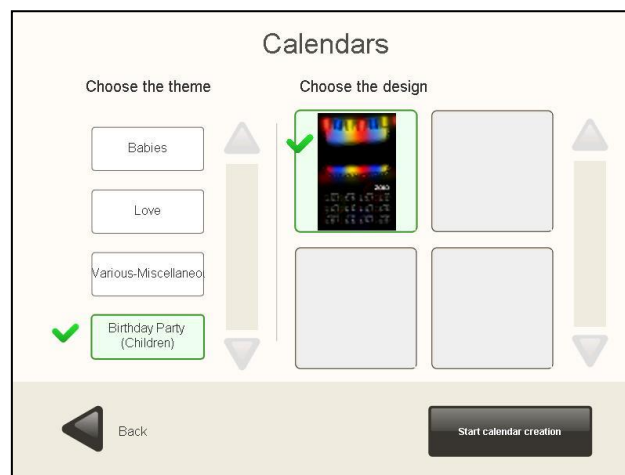
Before confirming the order, the user is asked to choose the print size and the number of copies per each print size.

### 3.8.2 Full year calendars

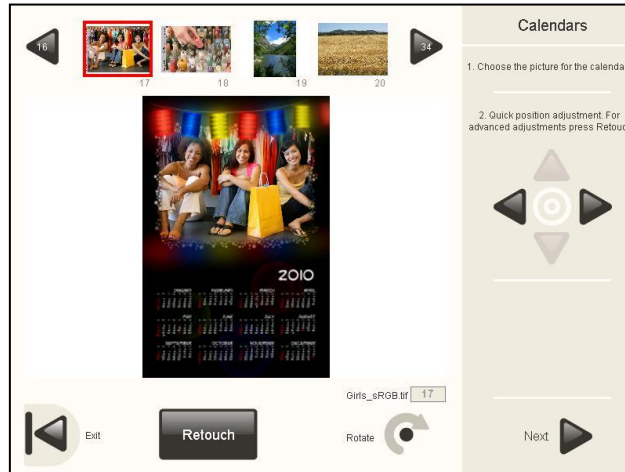
This option makes it possible to create a calendar of a specific year and using only one sheet. To do so, both the “Full year” option and the desired year will be selected.



Pressing 'Next', the thematic and design of the calendar can be chosen among several types.



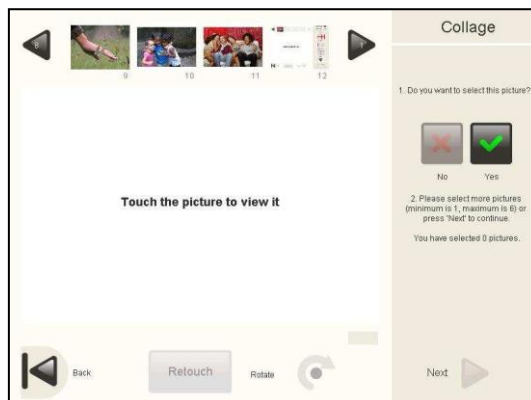
Pressing 'Start calendar creation' the 'Full year' calendar making is started. It's required to select a picture in the top section of the screen in order to combine it with the calendar shown in the center.



'Full year calendar' option uses only one picture for the whole year (only 1 sheet of paper). After selecting the picture and adjusting the position in the calendar, 'Next' button must be pressed to go on. Before confirming the order, the user is asked to choose the print size and the number of copies per each print size.

### 3.9 Collage (Optional)

Once the “Collage” button is pressed, the Collage service is started.  
First of all, the printsize is required to be chosen.  
After this, the browser screen is shown.

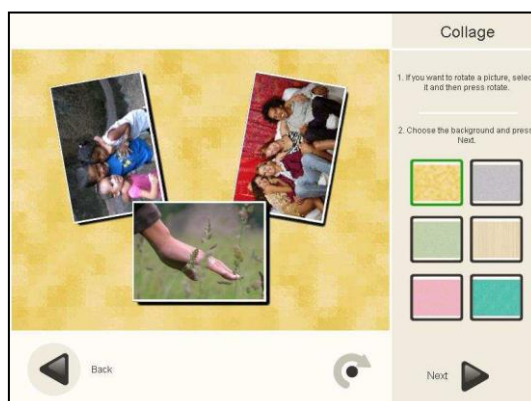


To select a picture in order to include it in the collage, the right panel buttons are being used.  
There is a minimum and a maximum amount of pictures to be selected. Both figures depend on the previously selected printsize.

After that, is required to select the layout among the different displayed.



The photos of the collage can be rotated by selecting them one by one and pressing the “rotate” button. The colour of the background can be selected in the same screen.



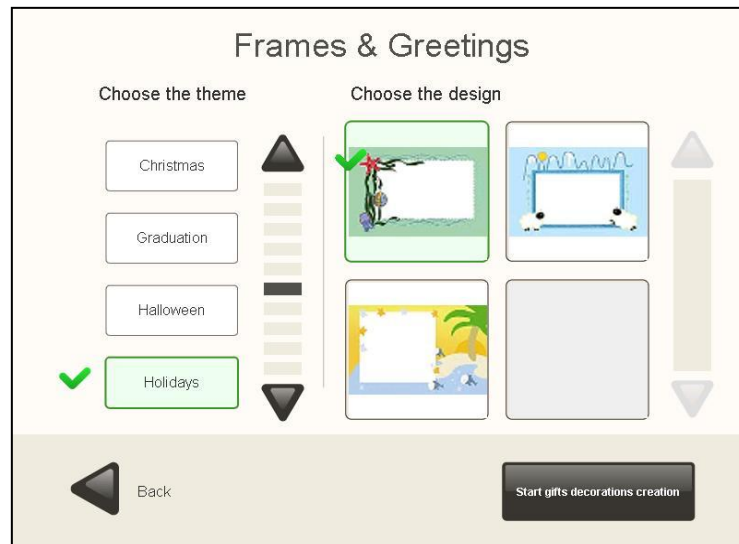
After that, is required to select size and number of prints to follow the standard workflow.



### 3.10 Frames & Greetings (Optional)

Once the “Frames & greetings” button is pressed, the Frames & greetings service is started.

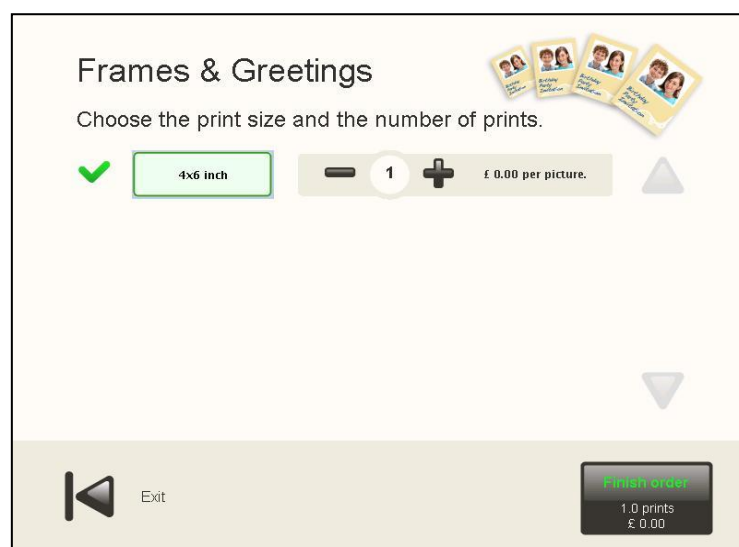
The theme and design selection screen appears. Once the design is selected, the photo must be chosen and the resultant greeting will be displayed.



Some designs can show an specific text like ‘Happy christmas’, ‘Happy holidays’ and so on, or a default text like ‘Enter your text here’. Whatever the text is, it always can be changed by the end user.

In the text edit menu, it’s possible to change the font type, font size and font color.

After that, the number of copies can be chosen in order to end the process.



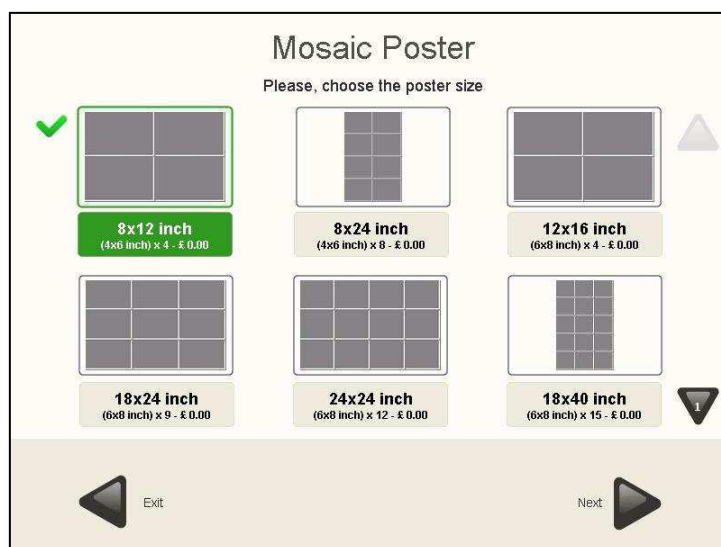
### 3.11 Mosaic poster (Optional)



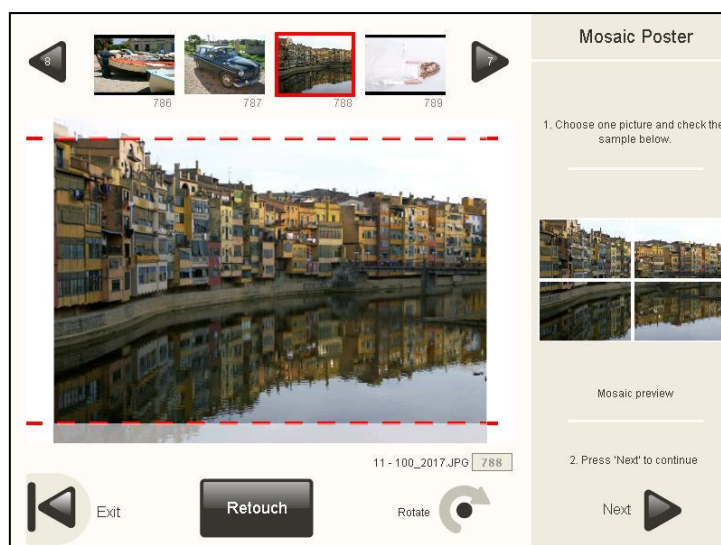
#### NOTE

- The pictures used for this service must be carefully selected in order to avoid undesirable results. The subtle separation between the pieces of the mosaic can hide important parts of the picture, as instance in people portrait photos, hiding part of the face. The zoom and pan adjustments, together with the poster size, have a great influence in the final result.

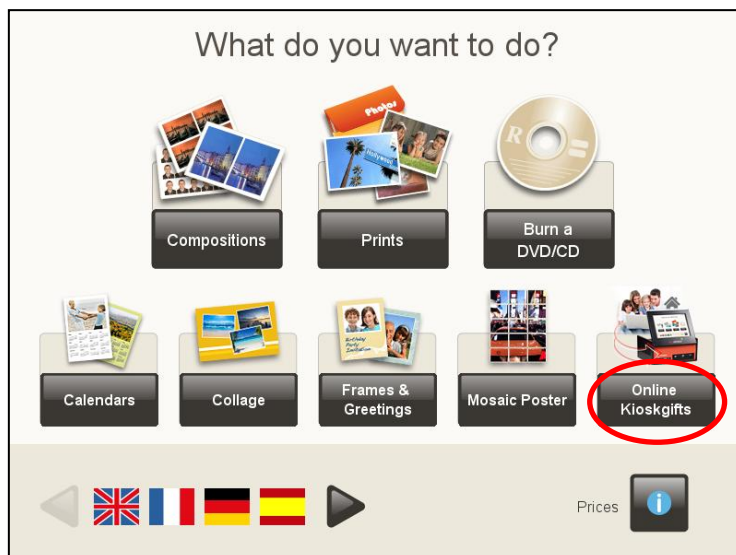
Once the “Mosaic Poster” button is pressed, the service is started.  
Depending on the paper sizes configured there will appear different mosaic sizes.



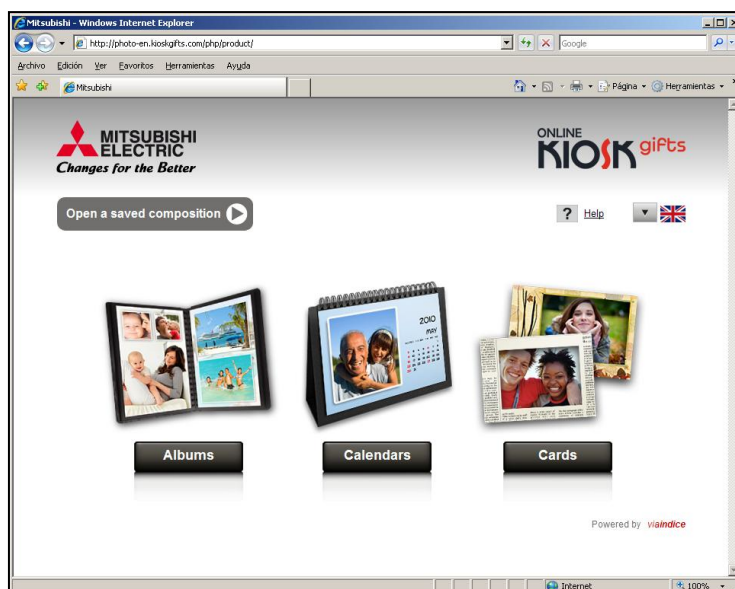
After choosing the mosaic size, a picture browser appears just showing a preview of the mosaic using the selected picture.



### 3.12 ONLINE Kioskgifts (Optional)



This service offers the possibility of printing the orders created at [www.kioskgifts.com](http://www.kioskgifts.com). The Kiosk doesn't require an Internet connection for this service: the website allows the user to create a product anywhere using a PC or MAC and an Internet access and take the order saved on a memory card, USB or DVD/CD to the store.



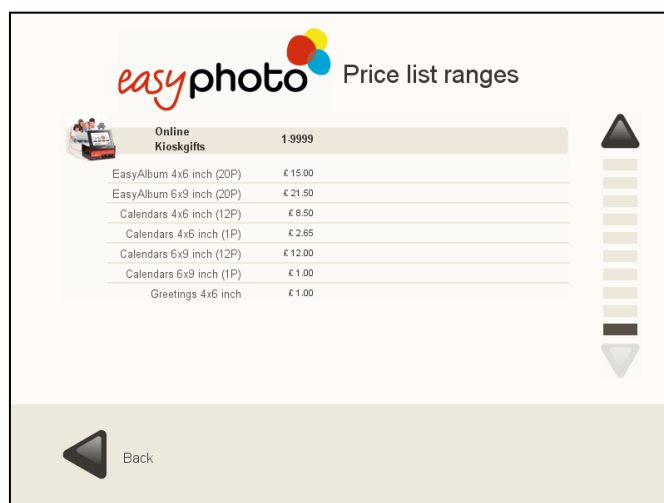
#### NOTES

Many different products can be created at [www.kioskgifts.com](http://www.kioskgifts.com). The shop staff must explain how the tool is used to the customers and what the shop's production capacities are. When new products that are compatible with easyphoto appear on the website, the system must be updated with an internal list of compatible products.

When the customer selects the pricing information, the list of all the available products is shown. Although some of these products may be similar or identical to other products created with local easyphoto services, such as greetings cards or calendars, the price must be set again, as the products are actually different ones.

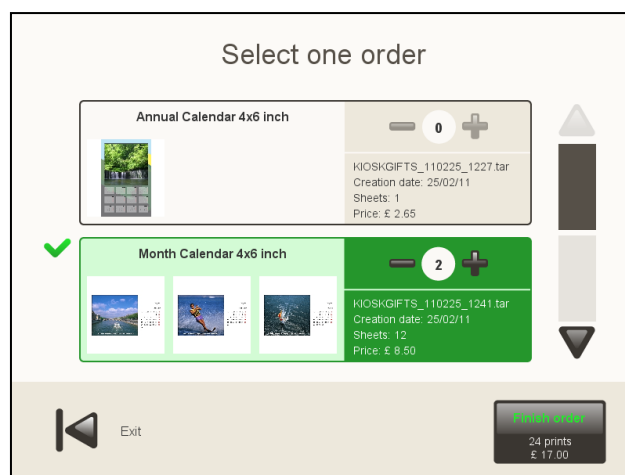
The [www.kioskgifts.com](http://www.kioskgifts.com) products that are compatible with easyphoto are:

- Easyalbum
- Greetings cards
- Calendars



Once the “ONLINE Kioskgifts” button is pressed in the main screen, the service is started.

After choosing the digital media support where the customer brings the order files (encrypted files with .tar extension) and the desired folders, the next screen appears.



It shows the different orders found in the device. Only one order can be selected from all the orders found.

Every order shows:

- The name of the product
- The name of the .tar file
- The date when the order was created
- The number of sheets of paper required for printing
- The price
- The amount of copies of the same order. The user can change the number of copies.

When an order can not be processed by the system, an error code is shown inside the order area. This is the list of possible error codes.

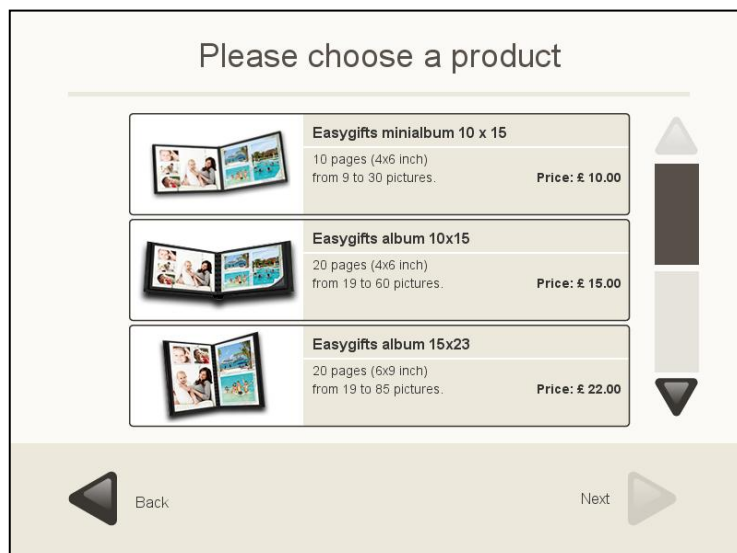
CODE	Description	Solution
2	Unknown product ID	Probably product is not supported or has new settings. Software update is recommended.
3	Product is disabled	Product must be enabled at settings area
7	No related consumables	The printsize should be enabled at 'sizes' area of settings
9	Wrong amount of pages	Order is damaged and can't be processed.
11	Incomplete order information	Order is damaged and can't be processed.
12	No pictures at order	Order is damaged and can't be processed.
13	No picture thumbnail at order	Order is damaged and can't be processed.

After pressing the "Finish Order" button, the summary is shown and the order must be validated to be executed.

### 3.13 Easygifts album (Optional)

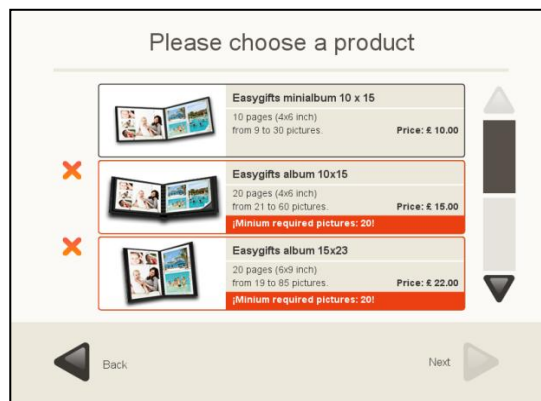
After pressing the “Easygifts album” button in the home screen, this service will commence.

Once the client has selected the folders where the images are, the product selection screen will be displayed.

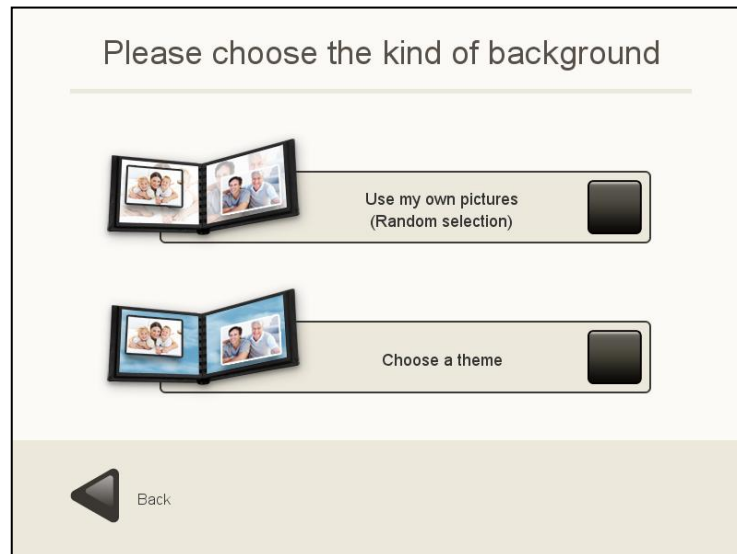


#### NOTE

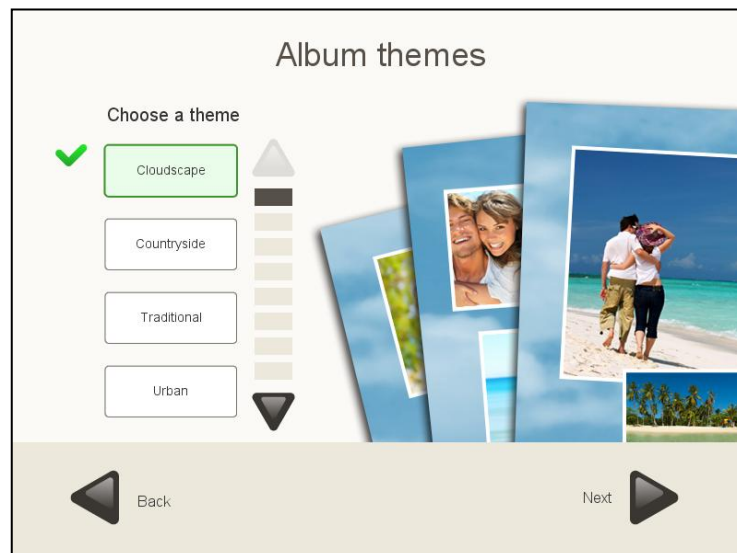
Products requiring a minimum number of images exceeding the number of images selected by the client will not be available and will be marked as such.



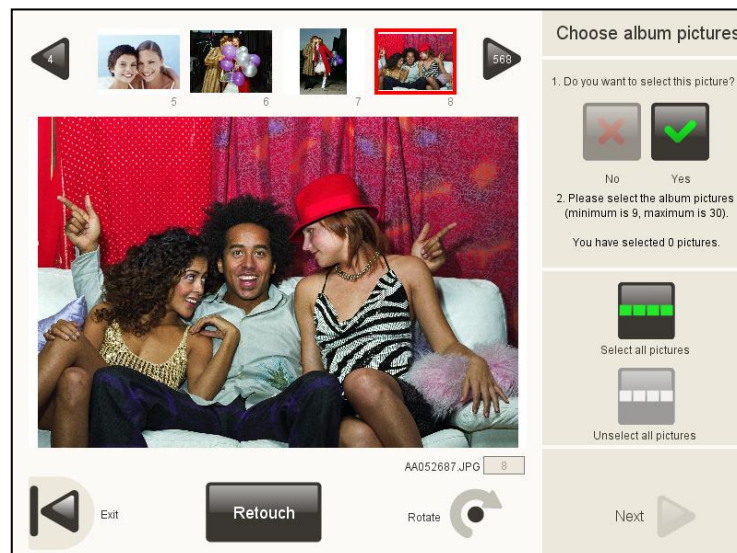
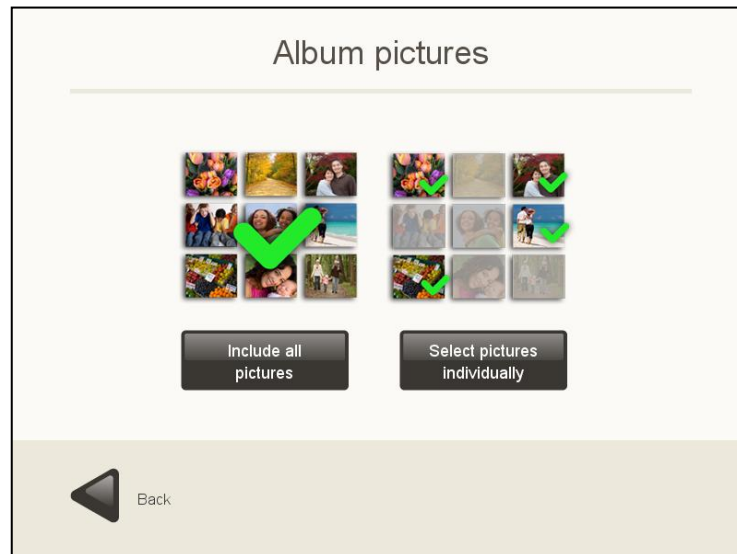
After selecting the product, the client should select the kind of background to be used for the pages. Clients may either choose to use their photos as a background or select one of the available themes.



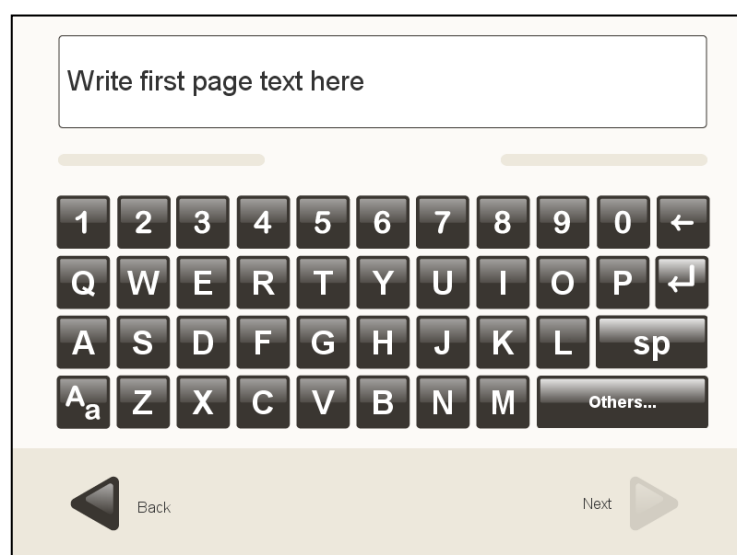
If a client decides on the option of using decorative elements, that client must choose one of the different elements installed in the equipment.



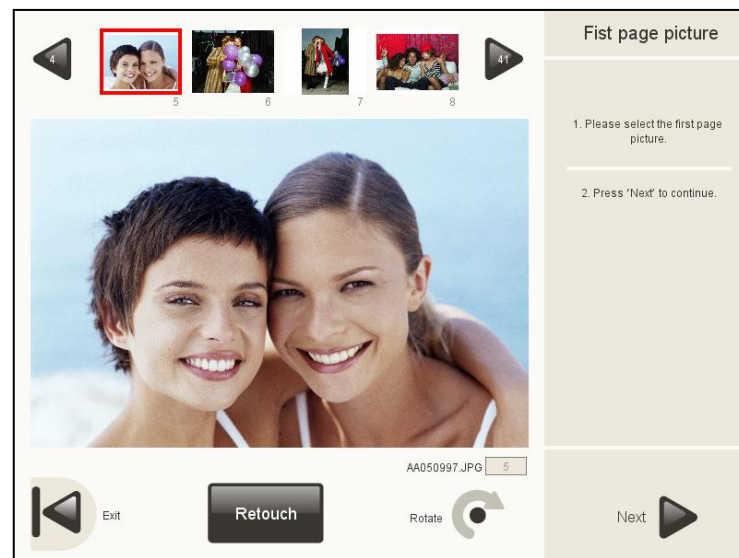
Then the client should select the photos to be included in the album. If the number of photos selected does not exceed the maximum number of photos allowed for the selected product, the client may either include all the photos in the album or select them individually. Otherwise, the client should select the photos individually. In the "Choose the photos individually" option, the client may also retouch the photos.



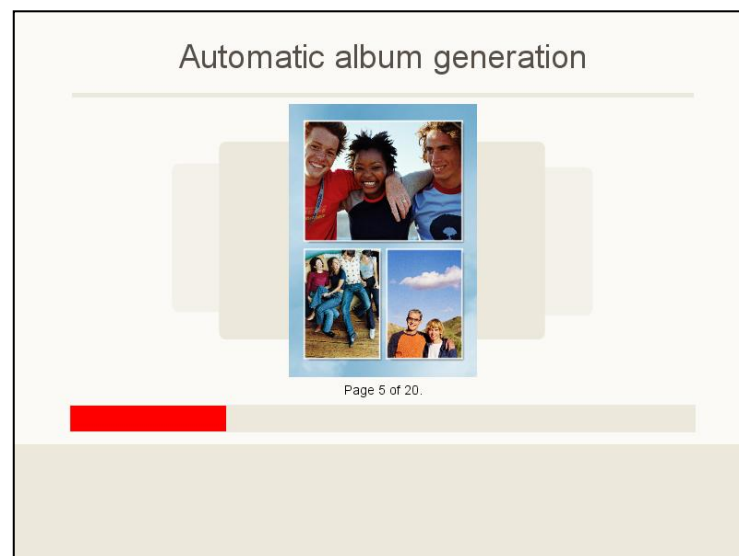
If the product selected has text on the first page, the client should enter this text using the keypad on the screen and select a photo for the first page of the album:





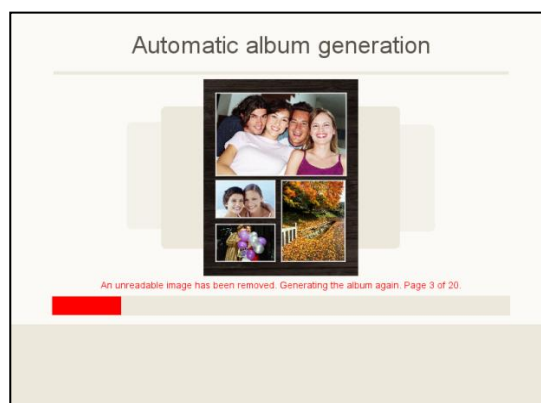


Then the automatic process for generating the album will start:



# NOTE

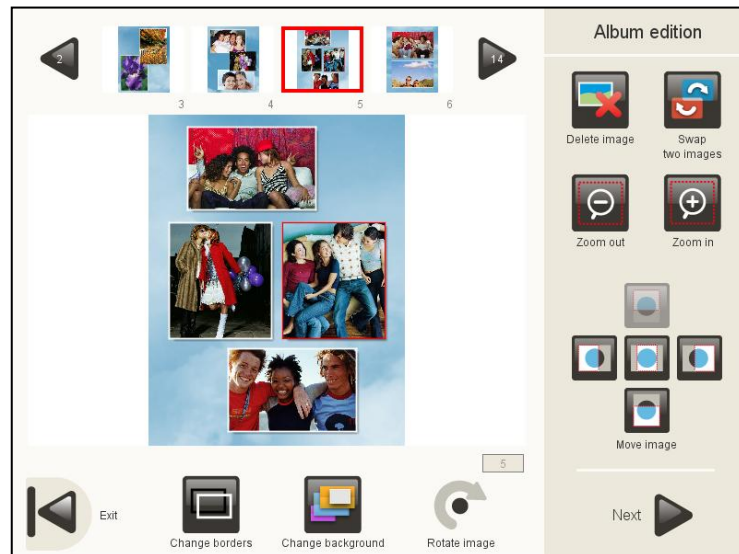
If the system detects a corrupt or non-supported image during the automatic album generation process, it will discard the image and start the generation process again, provided there are sufficient photos to complete the album:



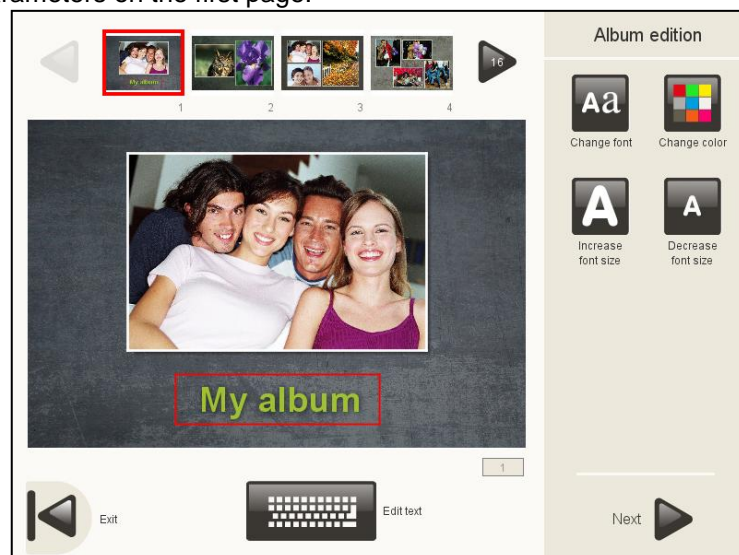
If there are not enough photos to generate the album, or if an error occurs during the generation process, the following screen will be displayed:



When the automatic generation process has finished, the album editing screen will be displayed:

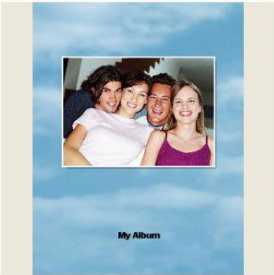


In the album editing screen, the client can browse and view all the pages generated, and also retouch them. The client can also change the edges of the photos on a page, change the background of the pages, rotate and frame the photos, eliminate or exchange photos and change the text parameters on the first page.



After completing the album, the user should press "Next" to go access the summary screen, in which the number of copies of the album that are to be printed can be selected.

## Summary




Choose the number of copies of your product:

---

Easygifts album 15x20

-
1
+
x £ 21.00

Amount
£ 21.00



Exit

Finish order  
 Quantity 1  
 £ 21.00

## 4 ADMINISTRATION

In this section, the operator and supervisor can check the system status, while the supervisor can configure all the system parameters.

- Touch twice at the top right of the principal screen to enter “Administration”.



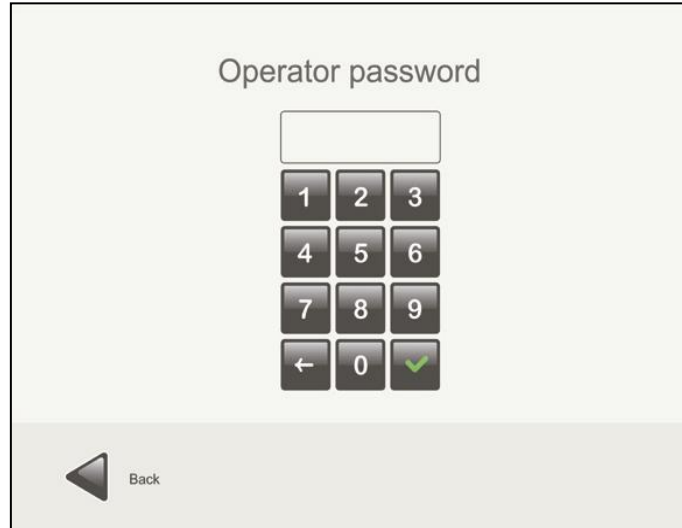
Once you have entered to administration, the following screen is showed:



The date and the System ID are shown. The System ID is unique information from the system that allows identifying it for new software licenses purchasing. In order to avoid confusions, the letters are shown in black and the numbers in green.

For acceding to "Settings":

- Introduce the supervisor password.
- The default password from factory is empty. It is highly recommended to change supervisor password once the system is installed.



Operator password

1 2 3

4 5 6

7 8 9

← 0 ✓

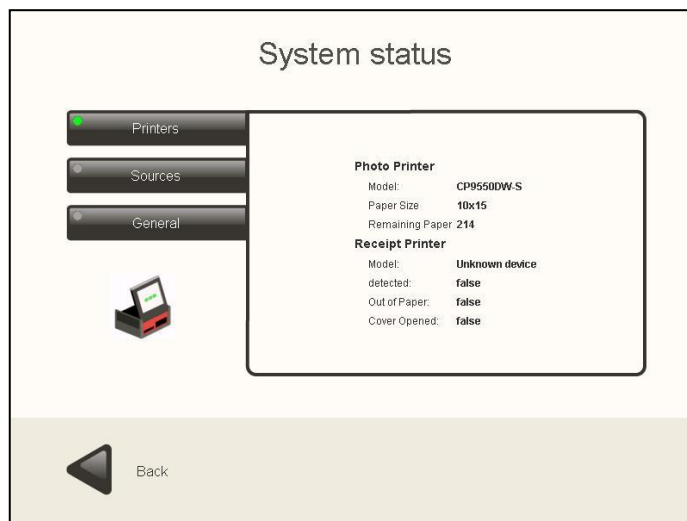
Back

## 4.1 System Status

In this option operators and supervisor can access to technical information of the equipment. This information is useful for service or remote support purposes.

The information is divided into 3 different areas:

- Printers: the information about the MITSUBISHI photo printer and ticket printer is shown in this area. Device proper connection or available media information is available.
- Sources: all information about picture source hardware devices is shown. Device manufacturer/model and other information like memory card inserted or CD/DVD inserted is also available. When using a PTP compatible Digital Camera, the identification provided by the camera is also shown here.
- General: general hardware & software information is shown, like MT1 hardware model, available memory, total free space in disk, network information, and O.S version and build date.



System status

Printers

Sources

General

Photo Printer

Model: CP9550DW-S

Paper Size: 10x15

Remaining Paper: 214

Receipt Printer

Model: Unknown device

detected: false

Out of Paper: false

Cover Opened: false

Back

## System status

Printers

Sources

General



**USB/Card**

Memory card inserted: **false**

USB device inserted: **true**

Media card reader: **Atech Flash Technology / EX-3U**

**DVD**

Media inserted: **false**

Writer / Reader detected: **true**

Model: **ATAPI/iHAS124\_Y**

**Bluetooth**


Dongle detected: **true**

Dongle model: **Broadcom Model: 2101**

ID: **MT1**

**Cameras**

Camera model: **Not detected**


 Back

## System status

Printers

Sources

General



**Hardware**

Version: **1.0.0**

Model: **MT1E**

**Operative System**

Version: **1.3.2**

Build Date: **20091021**

Description: **Linux on i386**

File Encoding: **UTF-8**

**Resources**

Total disk space: **1.3 GB**

Free disk space: **824 MB**

**Resources**

Total VM Mem.: **345.11 MB**

Free VM Mem.: **152.11 MB**

Total RAM: **882 MB**

Free RAM: **448 MB**

**Network**

Ethernet Link: **up**


MAC Address: **00:0A:48:1F:FB:D7**

IP Address: **192.168.227.208**

Mask: **255.255.255.0**

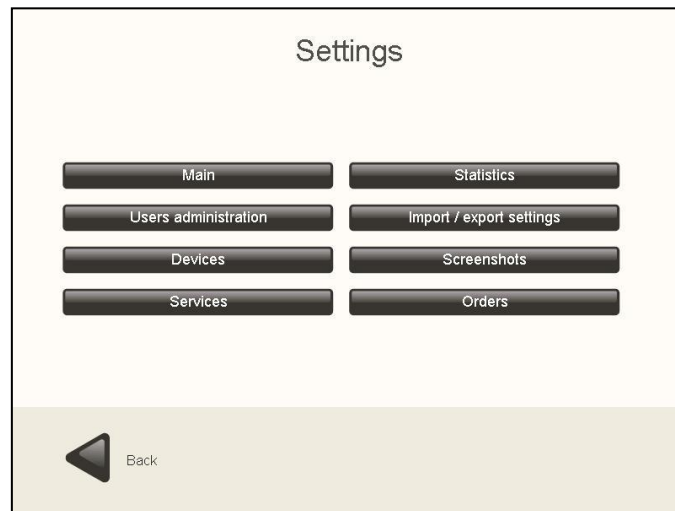
Gateway IP: **192.168.227.254**

OT Ping: **true**

 Back

## 4.2 Settings

Once the “Settings” button is pressed, the supervisor password is requested and the following screen is showed:



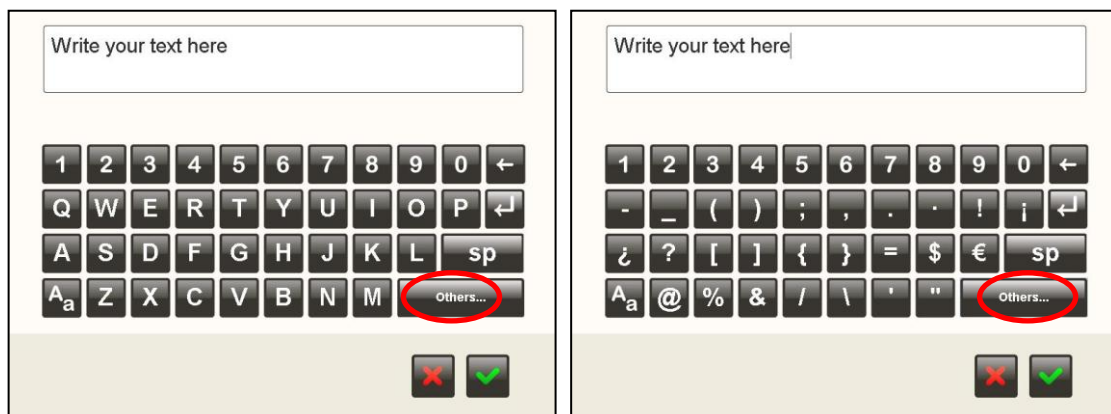
Supervisor can enter to the following options:

- Main.
- User's administration.
- Devices.
- Services.
- Statistics.
- Import/ export settings.
- Screenshots.
- Orders

In some parts of “Settings” it is necessary to enter a text. The on-screen keyboard can then be used.

It's composed by two layers: The first one shows the alphanumeric keyboard and the second one appears when pressing “Others” button showing a keyboard with special characters.

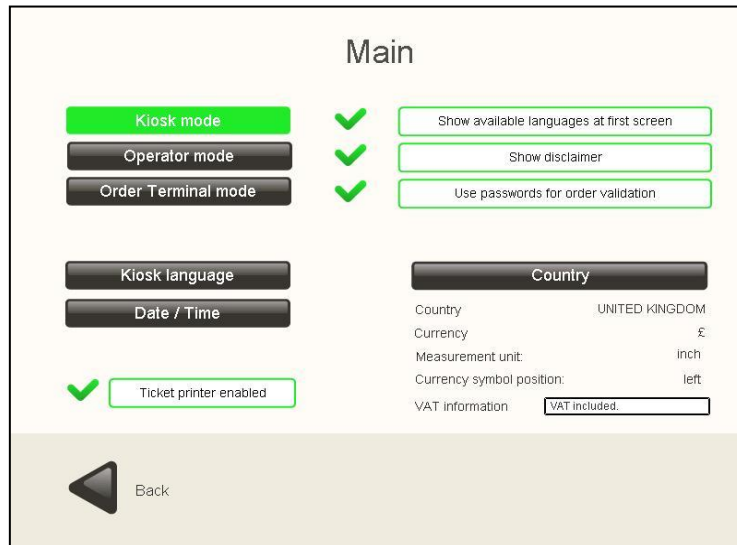
With the second layer alphabets with more than 26 letters such as Hebrew or Russian are supported.





## 4.2.1 Main

Once the “Main” button is pressed, the following screen is showed:



On this section you can choose:

- Workflow mode: Kiosk mode / Operator mode / Order Terminal mode
- Available languages for the end customer in mode Kiosk ('Kiosk language')
- Current country
- Date and time setting (for ticket printer)
- Enable/disable ticket printer (if available)



### NOTE

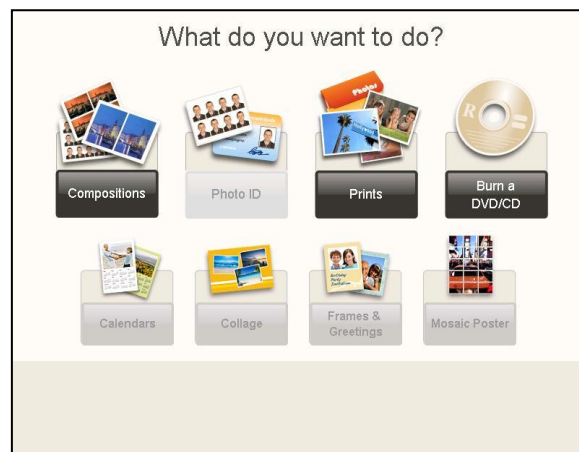
Please choose:

- 'Operator' mode when Easyphoto has to be used by operators and the supervisor.
- 'Kiosk' mode when Easyphoto has to be used by end users (end customers) as a semi-attended photo system.
- 'Order Terminal' mode when Easyphoto is attached to a Flexilab system. THIS ONE REQUIRES AN ADDITIONAL LICENSE.

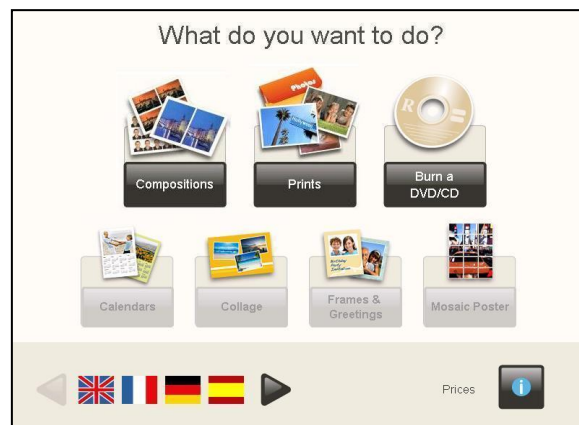
Once the Kiosk mode, Order Terminal or Operator mode have been selected:

- Press the “Show available languages at first screen” button to show the available languages at first screen.
- Press the “Show disclaimer” button to show the legal disclaimer at the beginning of the operation of Easyphoto.
- Press the “Use password for order validation” to introduce the password at the “Order summary” screen.

In Operator mode the main screen should be shown like this (with default values): no language selection is available. There is no need for the operator to choose a different language than default one, and also prices list and disclaimer have no sense to be shown.



In both Kiosk Mode and Order Terminal Mode the main screen should be shown like this when default values are not changed:



### 4.2.1.1 Installing the system as an Order Terminal

In order to use the easyphoto as an Order Terminal, it's necessary to change the working mode and set the network parameters after activating the license, in the equipment in which this is necessary. This can be done in 2 different ways: Basic and Advanced Mode.

For a basic lan connection (using a crossover network cable or ethernet hub), it's recommended to use the Basic Mode, because of the easier setup. When the system is attached to a corporate lan, it's better to use the Advanced Mode.



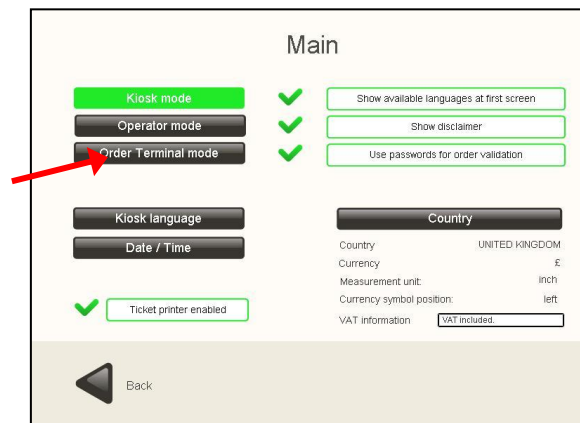
#### NOTE

The Click5000 of the Flexilab system needs to run software version 2.4.0 or above in order to support an attached easyphoto working as an Order Terminal. The shared resources of Click5000 must allow file writing operations to the client machines:

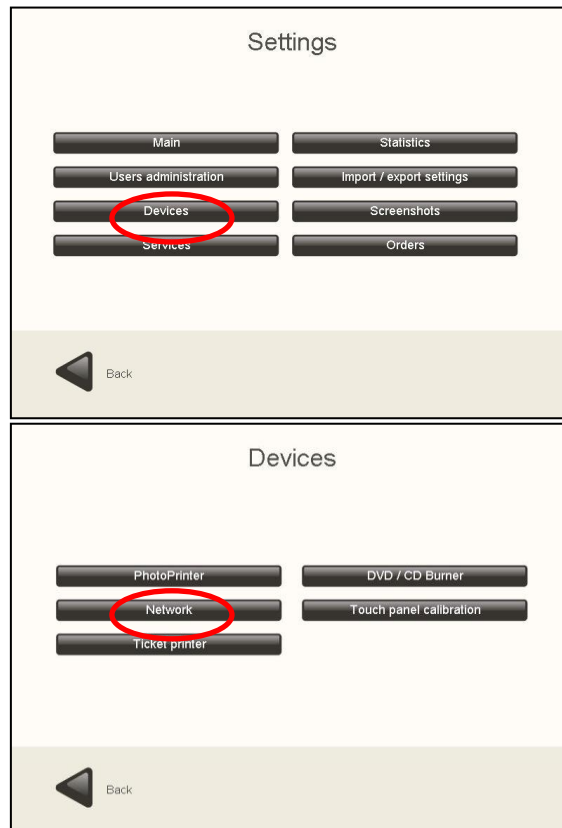
- D:\APPLICATIONS\ORDER\_TERMINAL shared as 'OTFOLDER'
- D:\KERNEL\SERVICE\_MODULES\DPSLAB\_LISTENER\INCOMING\_ORDERS shared as 'ERequest'

#### Steps to follow for installing the easyphoto as Order Terminal (Basic mode)

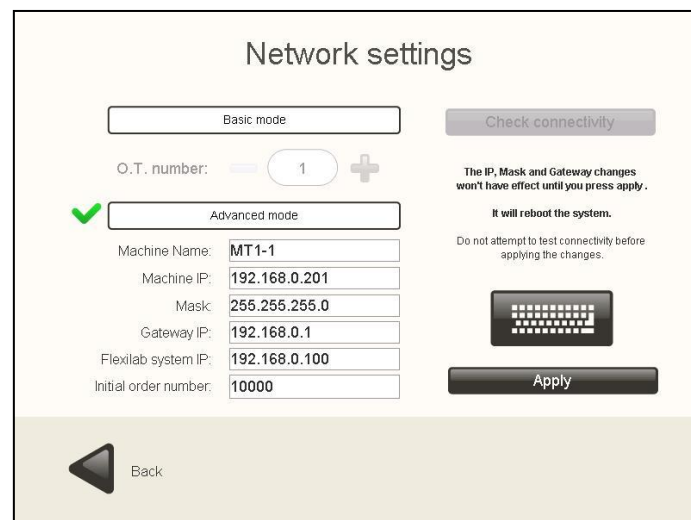
- Please connect both Click5000 and easyphoto systems with a crossover network cable or Ethernet hub, and switch on both systems.
- If the easyphoto system was never activated as an Order Terminal before, please be sure that you have your Activation Key, and proceed to next step. See chapter 6 for more information about licensing. If you are not sure if the system was already activated in the past, please proceed to next step anyway.
- Go to Settings → Main and select the 'Order Terminal Mode'. If any Activation Key is asked, please enter it now. For more information please see chapter 6 of this manual.



- Now it's necessary to configure Network settings. Please go to Settings → Devices → Network.



- e) Once “Network” button is pressed, please choose the ‘Basic mode’ option. Set the ‘O.T number’ using the ‘+’ and ‘-’ buttons as ‘1’ if there is only one Order Terminal connected to Click5000. (Change this number only if you are installing multiple easyphoto systems working as O.T. together with the same Click5000.)



- f) Even if you didn't change anything on this screen, please press the ‘Apply’ button. There is a ‘Check connectivity’ button in this screen. Please DO NOT CHECK CONNECTIVITY YET! Please use it after restarting the system if you need to check.
- g) Restart the system.
- h) After restarting the system, please set the rest of settings of the system like the printing sizes, product prices and so on.

- i) Once the system has completely been configured, it's recommended to export the settings. When working as an O.T., the settings are not exported to an external device: Click5000 will keep the easyphoto settings. See the 'Import/ Export settings' chapter of this manual. This way of work is useful when installing additional O.T's: all the previous steps are required for every O.T., except the h) step, that can be avoided just importing the settings from Click5000.

### Basic and Advanced mode. A deeper view.

- Basic mode: the Order Terminal (O.T.) number can be changed. This is useful, when using a basic lan installation, to identify each easyphoto connected to a Flexilab system. In this way, the basic connection parameters are changed automatically.

In this mode, Click5000 is supposed to be working with these parameters:



IP: 192.168.0.100  
IP mask: 255.255.255.0  
Gateway: 192.168.0.1

And the easyphoto with these ones (when O.T. number is '1'):

IP: 192.168.0.201  
IP mask: 255.255.255.0  
Gateway: 192.168.0.1  
Machine Name & Bluetooth ID: MT1-1  
Initial order number: 1000



If O.T. number is changed, as instance, to '2', these parameters will be changed automatically to these new ones, and so on:



IP: 192.168.0.202  
IP mask: 255.255.255.0  
Gateway: 192.168.0.1  
Machine Name & Bluetooth ID: MT1-2  
Initial order number: 2000



### NOTE

Pressing "apply" button will reboot the system. Do not attempt to test connectivity before applying the changes

- Advanced mode: manual configuration of all the net parameters such as machine name, IP, Mask, Gateway IP, etc.

Network settings

Basic mode

O.T. number: 1

Check connectivity

The IP, Mask and Gateway changes won't have effect until you press apply. It will reboot the system. Do not attempt to test connectivity before applying the changes.

Advanced mode

Machine Name: MT1-1

Machine IP: 192.168.0.201

Mask: 255.255.255.0

Gateway IP: 192.168.0.1

Flexilab system IP: 192.168.0.100

Initial order number: 10000

Apply

Back

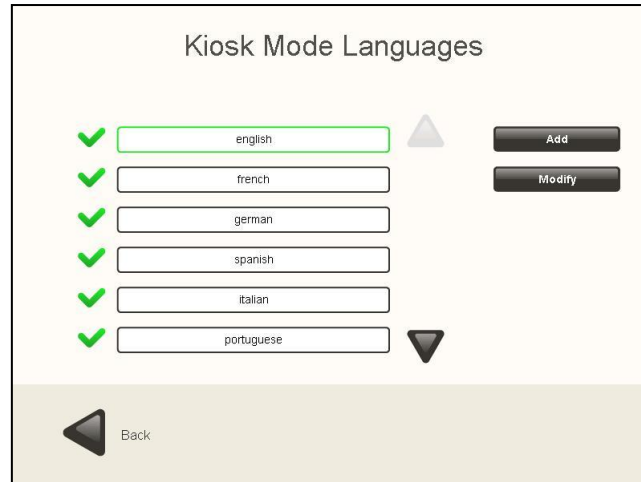
- By pressing check connectivity button, a connection test is performed to ensure that the parameters are valid.
- The Machine Name parameter (visible in the Advanced Mode section) is also used to set the Bluetooth Name (ID). Even using the Basic mode, if the Bluetooth ID needs to be changed, it's possible to select Advanced Mode and change this parameter. This is useful when there is more than one easyphoto (even working as standalone system) in the same place, in order to avoid duplicated Bluetooth ID.

**NOTE**

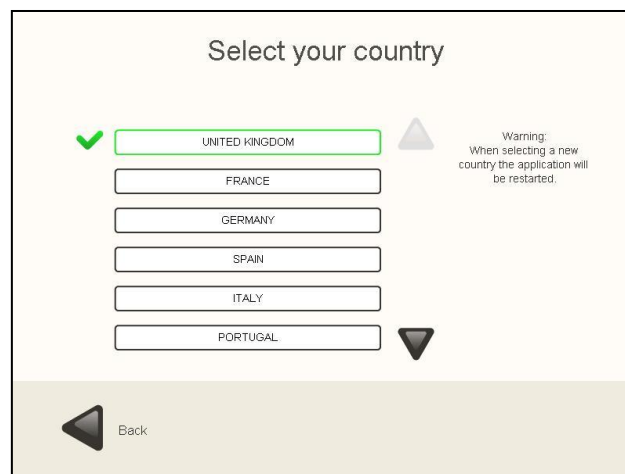
Pressing "apply" button will reboot the system. Do not attempt to test connectivity before applying the changes

### 4.2.1.2 Select Kiosk Languages

1. Use the arrows to display all the languages.
2. Press the languages to select them.



### 4.2.1.3 Select Country



1. Use the arrows to display all the countries.
2. Press the country to select it (only one can be selected at the same time).



#### NOTE

When changing the country, the application is automatically restarted with the new country parameters already set.

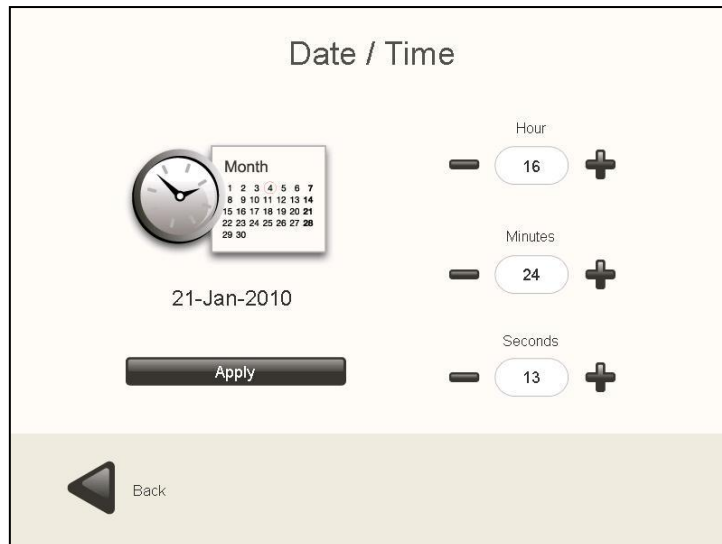
Selecting a country means that the following parameters are changed:

- Default easyphoto language.
- Currency (symbol and symbol position).
- Measurement units (cm or inches).
- VAT information message (needs to be entered in the text box).

#### 4.2.1.4 Date / Time

Date and time configuration.

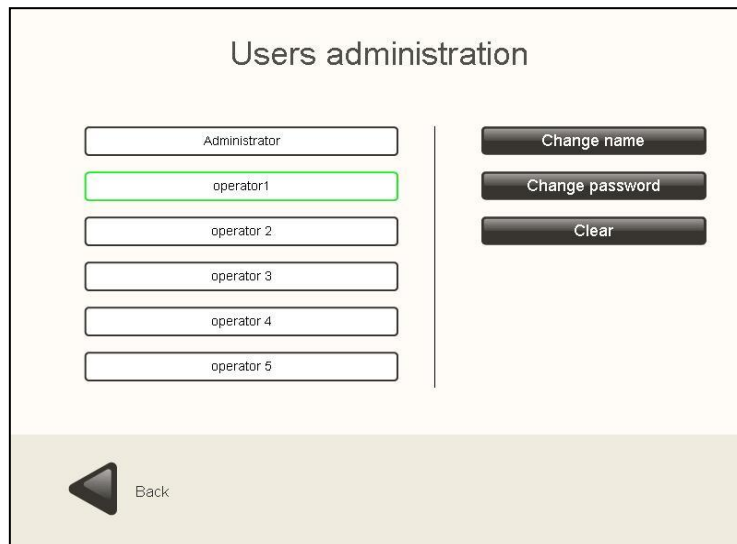
In order to advance or take the date back, 'hour' setting must be changed. Only 1 day shifting can be applied.



The 'Date / Time' configuration screen features a central clock icon and a calendar showing '21-Jan-2010'. To the right, there are three vertical sliders for 'Hour' (set to 16), 'Minutes' (set to 24), and 'Seconds' (set to 13). Each slider has minus and plus buttons. Below the sliders is an 'Apply' button. At the bottom left, there is a 'Back' button with a left-pointing arrow.

#### 4.2.2 User's administration

Once the "User's administration" button is pressed, the following screen is showed:



The 'Users administration' screen displays a list of users: 'Administrator', 'operator1', 'operator 2', 'operator 3', 'operator 4', and 'operator 5'. The 'operator1' entry is highlighted with a green border. To the right of the list are three buttons: 'Change name', 'Change password', and 'Clear'. At the bottom left, there is a 'Back' button with a left-pointing arrow.

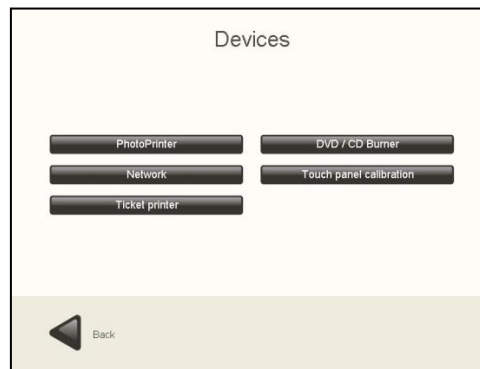
On this screen:

- Press the "Change name" button to modify the name of the operator and the supervisor.
- Press the "Change password" button to modify the supervisor or operator passwords.
- Press the "Clear button" to restore the modified names of operators and supervisor.



### 4.2.3 Devices

Once the “Devices” button is pressed, the following screen is showed:



- Press the “PhotoPrinter” button to modify the MITSUBISHI photo printer default printing quality settings.
- Press the “DVD/ CD Burner” button to increase or decrease the recording speed.
- Press the “Printer ticket” button to change the receipt ticket messages, like shop name, address, phone number, etc...
- Press the “Touch panel calibration” button to calibrate the screen.
- Press the “Network” button to setup network parameters when the system is working as an O.T. Also to setup Bluetooth communication.

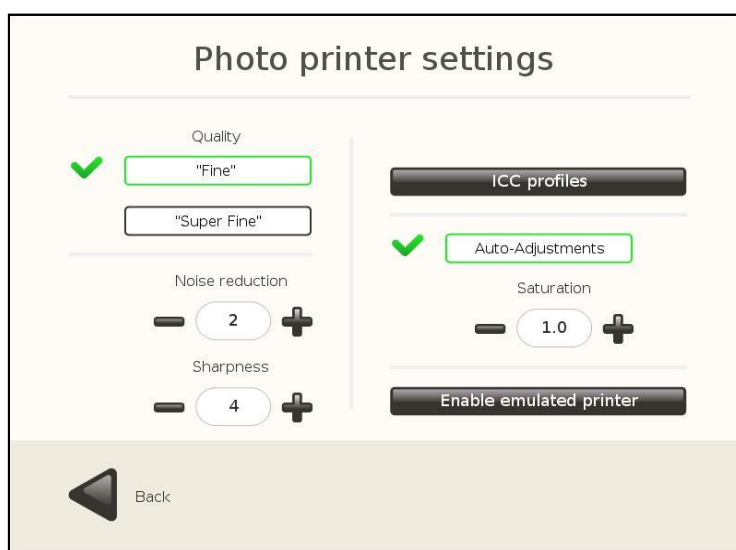
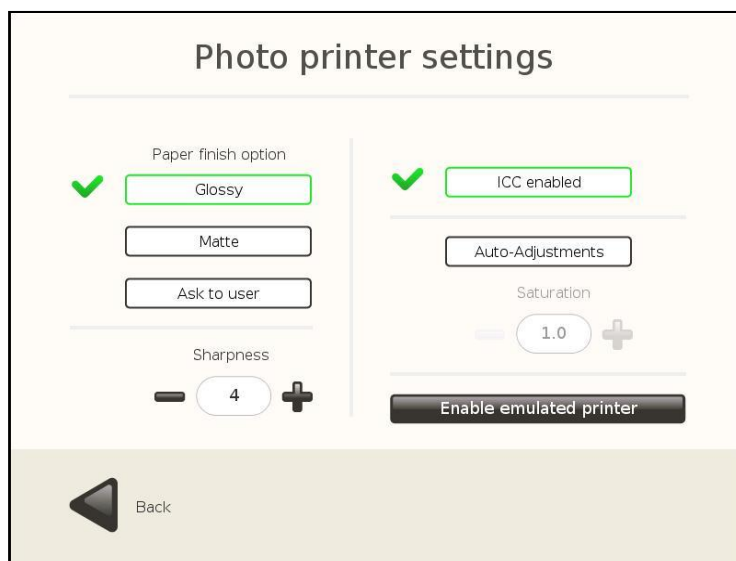


#### NOTE

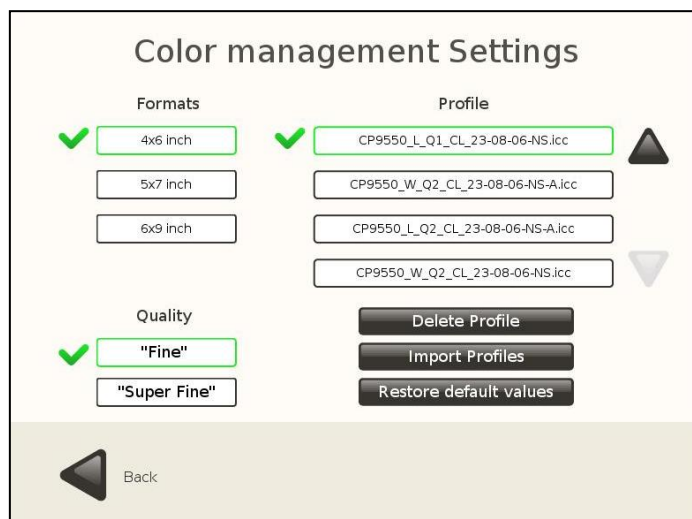
- In order to setup the Bluetooth configuration (Bluetooth name for the easyphoto) see chapter ‘Network Settings’.

### 4.2.3.1 Devices. Photo printer

Once the “Photoprinter” button is pressed, the following screen is showed. Depending on the printer model used, some of these parameters won’t be shown:



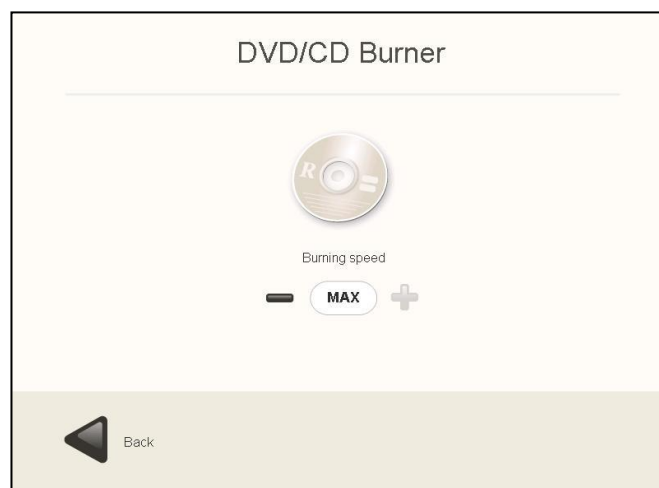
- Change “Sharpness” value to enhance the sharpness of the printed pictures.
- “Noise reduction” value can help to reduce grain or noise in flat color areas. Default value is “off”.
- “Quality”. Printing speed can be changed. While “Fine” value means faster printing speed, “Super Fine” means slower printing speed but better quality. Default value is “Fine”.
- “Auto-adjustments”. This is an automatic brightness and contrast functionality, based in the content of each picture. It’s very useful for amateur pictures, and the result can be very impressive on dark or poor contrast pictures.
- “ICC Profiles”. In the CPD70 and K60 models only the colour management function can be activated or deactivated through the ICC profiles. In the case of the CP9550DWS, the ICC profile menu is accessed. This menu is for advanced users or technical staff. It allows to manage the ICC profiles for every printing size and speed.



- Activate virtual printer. This allows you to work with the equipment without the printer connected. It simulates the connection of a printer with a 15x32 size consumable.
- Print finish options. Only for the CPD70 and K60. This is configured if the print finish is glossy or satin by default, or if the end customer is asked to choose one of the two options.

#### 4.2.3.2 Devices. DVD/CD burner

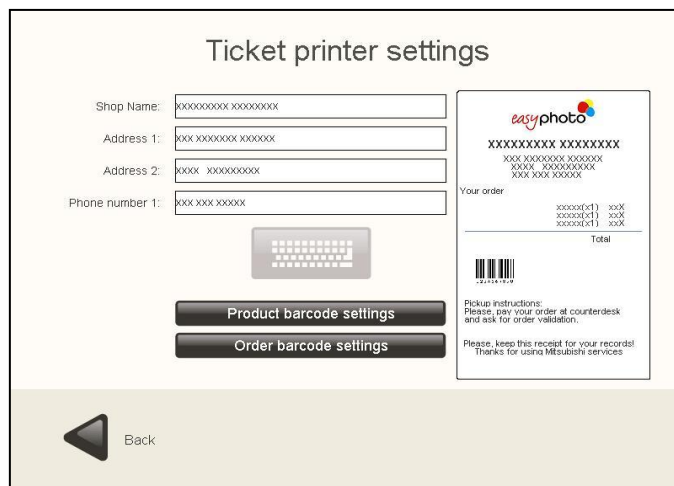
Once the "DVD/CD Burner" button is pressed, the following screen is showed:



Press "-/+ " button to increase or decrease the burning speed.

### 4.2.3.3 Devices. Ticket printer

Once the “Ticket Printer” button is pressed, the following screen is showed:



The screen displays the 'Ticket printer settings' interface. On the left, there are input fields for 'Shop Name', 'Address 1', 'Address 2', and 'Phone number 1', each followed by a screen keyboard icon. Below these fields are two buttons: 'Product barcode settings' and 'Order barcode settings'. On the right, there is a preview of a printed ticket. The ticket includes the 'easyphoto' logo, a barcode, and text: 'Your order:', 'Total', and 'Pickup instructions: Please, pay your order at counterdesk and ask for order validation. Please, keep this receipt for your records! Thanks for using Micusoft services'. At the bottom left, there is a 'Back' button with a left-pointing arrow.

In this one, it's possible to edit the contents shown in the ticket. The barcodes shown are formatted in EAN13 standard.

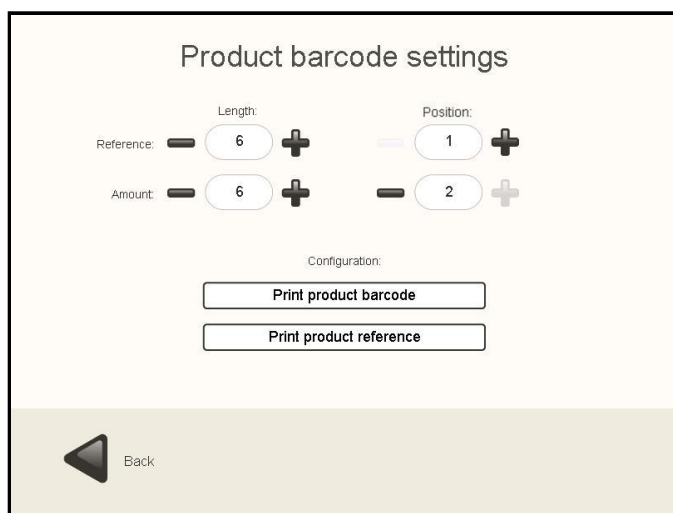
A screen keyboard is available to fill this data:

- Shop name
- Address (2 lines)
- Phone number

#### 4.2.3.3.1. Product barcode settings

This is the barcode that identifies the product among the different available products in the easyphoto machine.

- **Print product barcode:** When it's enabled, a barcode will be printed for each product.
- **Print product reference:** When it's enabled, a different number will be printed per each product reference, instead of using a barcode.



The screen displays the 'Product barcode settings' interface. It features two rows of settings. The first row is for 'Reference', with a 'Length' of 6 and a 'Position' of 1. The second row is for 'Amount', with a 'Length' of 6 and a 'Position' of 2. Each setting has a minus button, a numeric input field, and a plus button. Below these settings, there is a 'Configuration:' section with two buttons: 'Print product barcode' and 'Print product reference'. At the bottom left, there is a 'Back' button with a left-pointing arrow.

- **Length:** It allows setting the length of each part that composes the barcode.
  - **Reference:** Number of digits used to show the product reference.
  - **Amount:** Number of digits used to show the product price.
- **Position:** It specifies which field (Reference or Amount) is placed first in the barcode.

The product reference is filled in the screen where prices are set.  
(See chapter 4.2.4.1(3) "Prices settings")

Services prices						
Collage	Range 1		Range 2	Range 3	Range 4	Range 5
	1	9999				
4x6 inch		0.35				
Product reference		0000001300				

#### 4.2.3.3.2. Order barcode settings

This is a unique barcode being printed for the whole order, including the total price and global reference to the easyphoto service for the shop accounting.

- **Print order barcode:** When it's enabled, a barcode will be printed for every order generated in the machine.

### Order barcode settings


Length:

Reference:


Amount:

Reference:

Position:



Configuration:

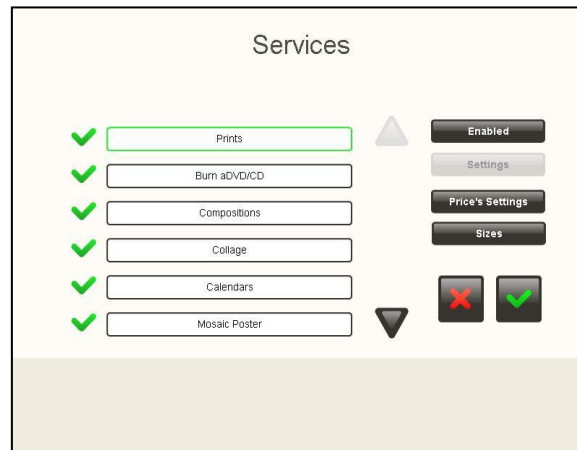


Back

- **Length:** it allows setting the length of each part that composes the barcode.
  - **Reference:** Number of digits used to show the order reference.
  - **Amount:** Number of digits used to show the order price.
- **Reference:** This is the code that identifies an easyphoto order.
- **Position:** It specifies which field (Reference or Amount) is placed first in the barcode.

## 4.2.4 Services

In “Services” it is possible to enable or disable services and set their prices and options when available.

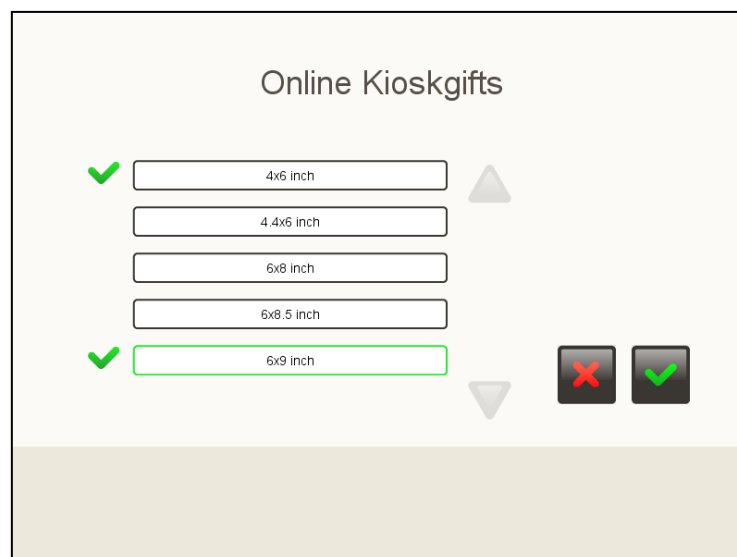


By pressing the button ‘Sizes’ the different print sizes can be defined for the selected service. When the system is set up as an Order Terminal, the list will be longer than if it is set up as an autonomous terminal.



### NOTE

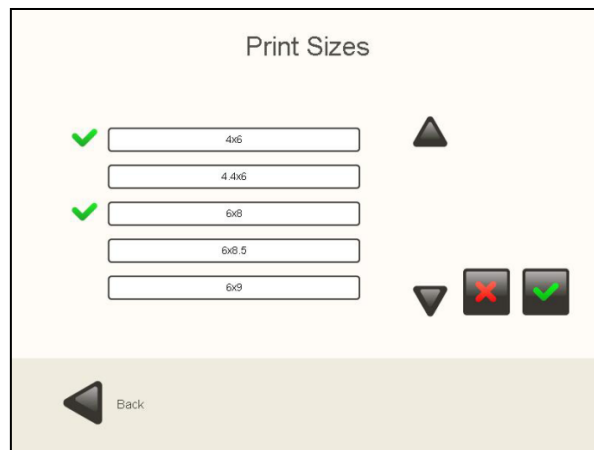
It is highly recommended to enter this screen with the printer **CONNECTED** and the consumable already installed. Otherwise, certain configurations may be lost later.



To check the available options per each different service, just press “Settings” button when the desired service is selected (rounded with the green square).

#### 4.2.4.1 Prints.

By pressing the 'Sizes' button the available printing formats can be set.



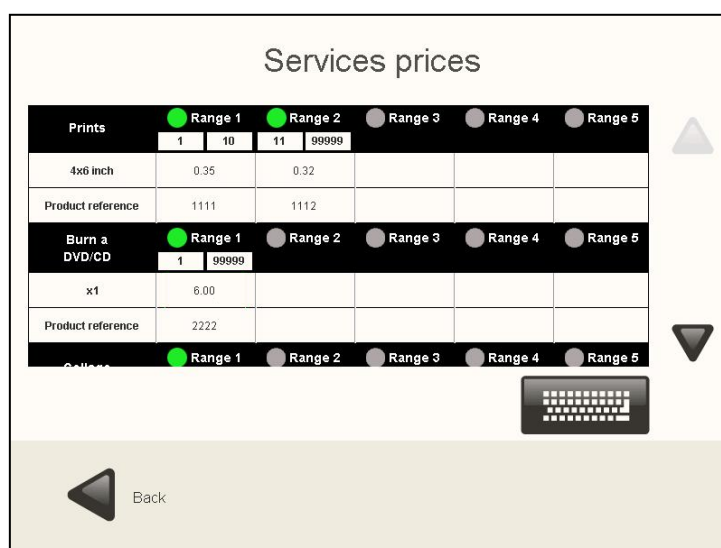
1. Use the arrows to display all the sizes.
2. Press the desired sizes to select them.



#### NOTE

- You can select a maximum of 4 sizes (when the system is not working as O.T.)
- When working as an O.T., it's necessary to previously check that the selected print sizes are available at Flexilab size, otherwise the orders will never be printed out.
- If there is no printer attached to the system, the default print media size is 6x9 inches (15x23cm).

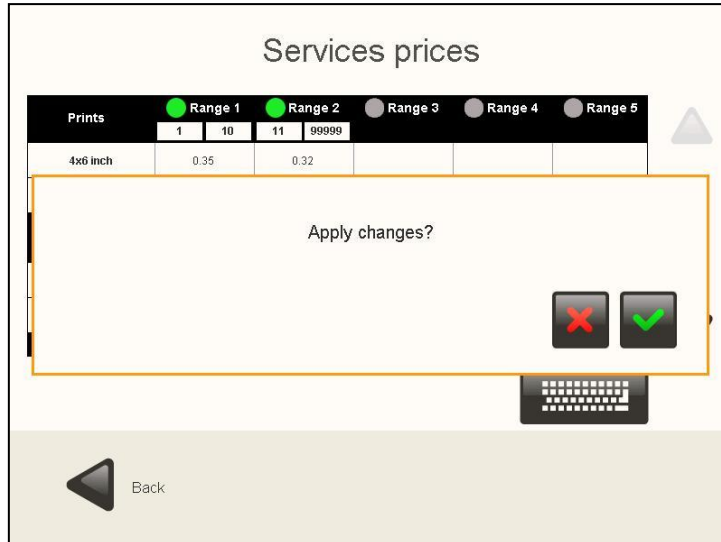
3. Press the "Prices settings" button to display all the prices and/or modify them. The following screen is showed:



4. Use the arrows to move across all available services.
5. Press the price you want to modify.

6. Once the price is selected, write the new one.
7. Insert the product reference (it will be used in the ticket printing. See chapter 4.2.3.1)
8. Activate/deactivate price ranges by pressing the green circles.
9. Enter the amount of copies of the range when activating a new one.

After pressing the button “back”, the next screen will appear in order to apply the changes or not.



Prints	Range 1	Range 2	Range 3	Range 4	Range 5
1	10	11	99999		
4x6 inch	0.35	0.32			

Apply changes?

Back

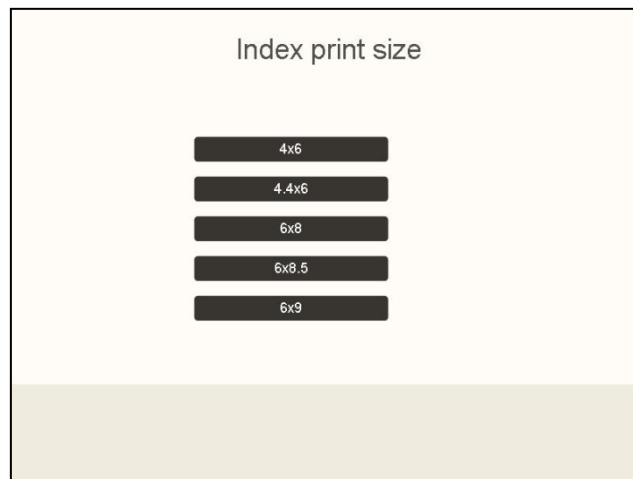


#### NOTE

It's highly recommended to enter this screen with the printer POWERED ON and the media already installed. Otherwise some configurations can be lost later.

#### 4.2.4.2 Index Print.

By configuring this service, it is possible to set the print size, depending on the media size detected. In the example, 6x9 inch media size is installed in the printer, and up to 6 different print sizes can be printed with this media size, by cutting the paper automatically in the printer itself.



Index print size

4x6

4.4x6

6x8

6x8.5

6x9

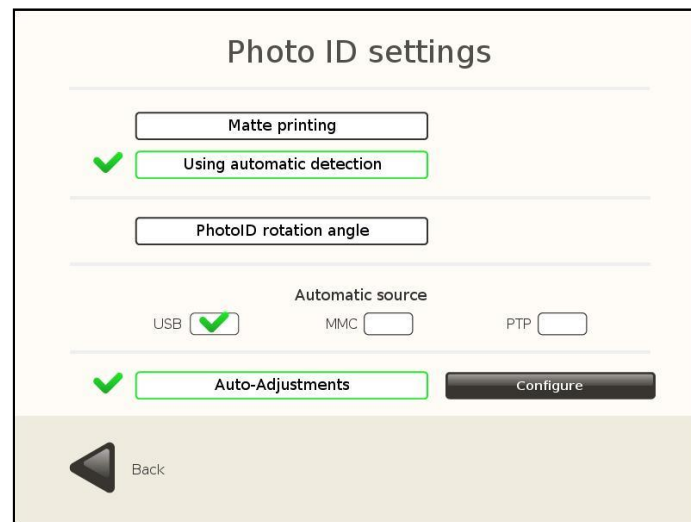


#### 4.2.4.3 Photo ID.

When configuring this service, it is possible to set a default picture source. This helps to increase the workflow speed and avoids asking the operator where the system will find the pictures every time. The professional photographer is used to take ID pictures with the same camera and digital media. So, it's not necessary to select picture source on every order and loose time to make the service.

The available options are USB, MMC (digital media card) and PTP.

The option of printing this type of service on satin or glossy paper is also shown. This option is only shown for certain printer models: CPD70 and K60.

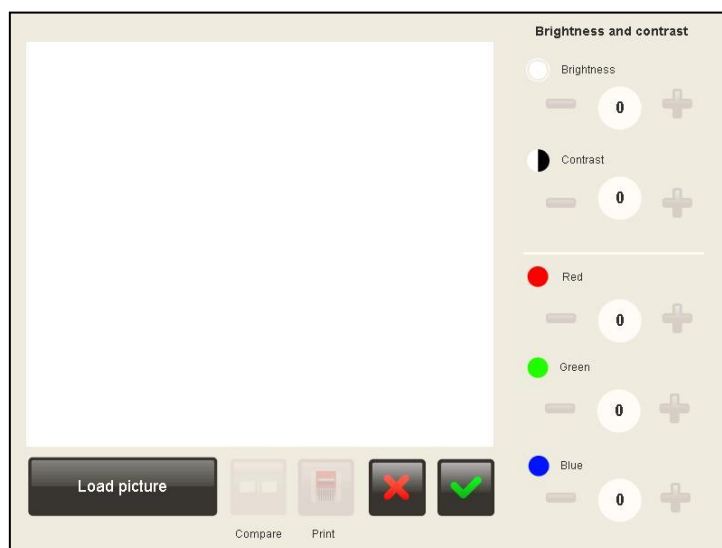


The PhotoID rotation angle allows setting an automatic rotation angle for every picture that the photographer takes. This helps to save time, too.

It's also possible to enable or disable in this screen the auto biometric detection every time that a picture is selected in the thumbnails array of PhotoID. Default value is 'enabled' (checked).

In the Advanced PhotoID settings is possible to adjust some picture properties corrections in order to be applied automatically every time an ID picture is being printed. Brightness, contrast and color balance can be set. This function can be enabled or disabled, too.

A sample picture can be loaded (either from the USB or memory card source) in order to adjust the parameters.

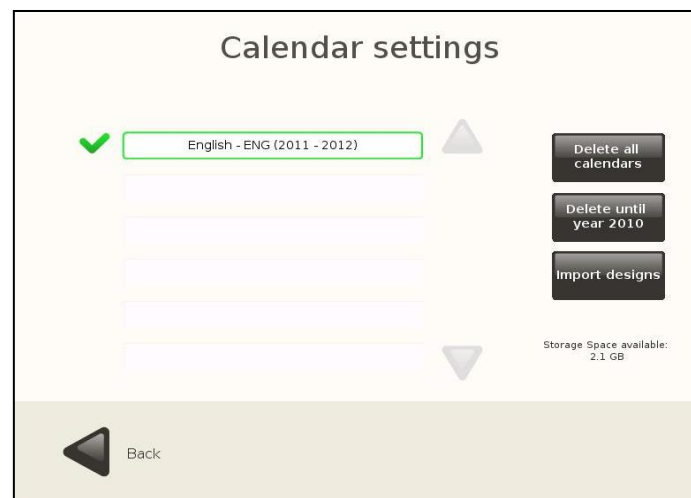


#### 4.2.4.4 Calendars.

The purpose of these settings is to maintain the library of available calendar designs per every year.

Every item of the list shown in the screen belongs to a different language, showing the first and the last of the available years.

By configuring this service, depicted on the image below, it is possible to change the following settings:



1. **Delete all calendars.** This option will delete all the installed calendars, regardless of the selected language.
2. **Delete until the previous year.** This option will delete all the calendars of the previous years, leaving the current year and the following years, regardless of the selected language..
3. **Import designs.** This option allows importing designs of calendars from the distributed Calendars Designs CD or from a USB flash drive.
4. **Default language selection.** The ticked language will be set as default language. In the case that the system language or the language selected by the end user does not match with any of the installed calendar languages, the calendars on the language ticked as default will be shown.
5. **Storage Space Available.** It shows the information about the free disk space in the system.

### NOTE

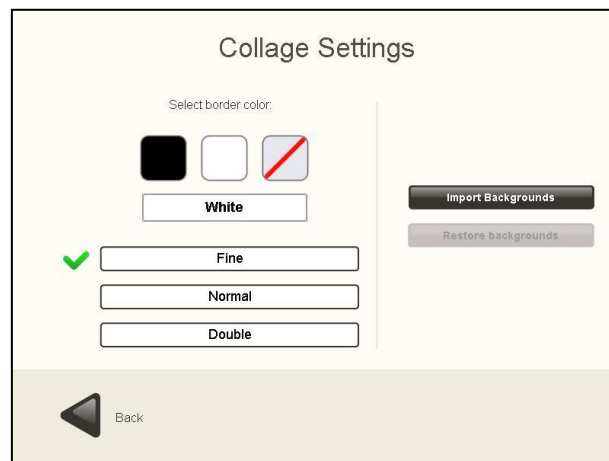
In order to import new designs, as shown on the following screen, it is needed to select the calendars languages that will be installed on the system from the distribution CD or from a USB flash drive.



- Please do not install more than 4 different calendar collections in the system.
- Consider the available storage space before installing new calendar collections. Old calendar collections can be deleted in case of more space is needed.

#### 4.2.4.5 Collage.

By configuring this service, depicted on the image below, it is possible to change the following settings:



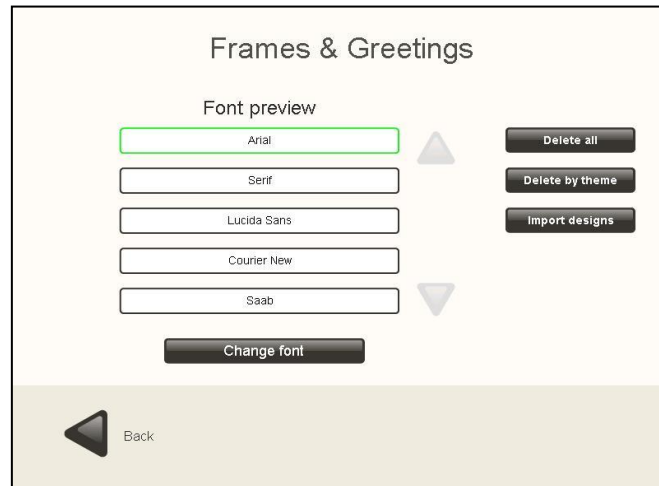
1. **Import Backgrounds:** . This option allows to import new different background..
2. **Restore backgrounds:**. This option allows to restore the originally included backgrounds..
3. **Select border color and thickness:** This option allows to set different styles of the border in the collage pictures.

### NOTE

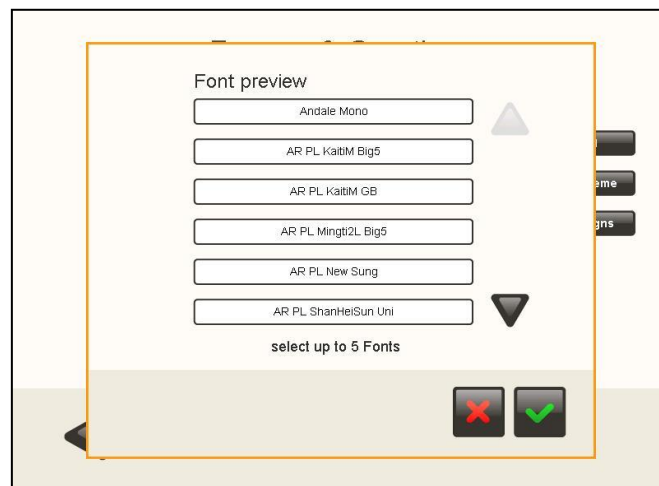
- In order to import new backgrounds an usb pendrive has to be plugged in, and the system won't ask for confirmation.

#### 4.2.4.6 Frames & Greetings.

By configuring this service, depicted on the image below, it is possible to change the following settings:



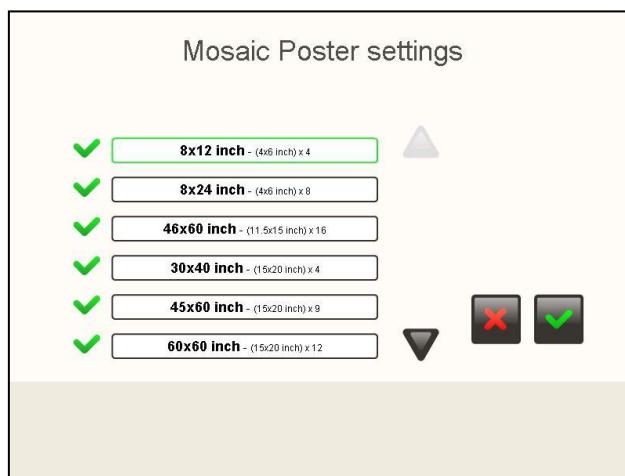
1. **Delete all themes.** This option allows deleting every frame&greeting design available in the system.
2. **Delete by theme.** This option allows deleting the frames&greetings selecting by theme.
3. **Import designs.** This option allows importing designs of frames&greetings.
4. **Change font.** There are five different text fonts selected by default. The final user will be able to choose among these five text fonts. It's possible to change them by selecting the one to replace and then click Change font. It will appear the picture shown below with a list of available the fonts and there the desired font has to be chosen.



#### NOTE

- In order to import new designs it is needed to press 'Import designs' and then follow the same workflow as when importing calendars

#### 4.2.4.7 Mosaic Poster.



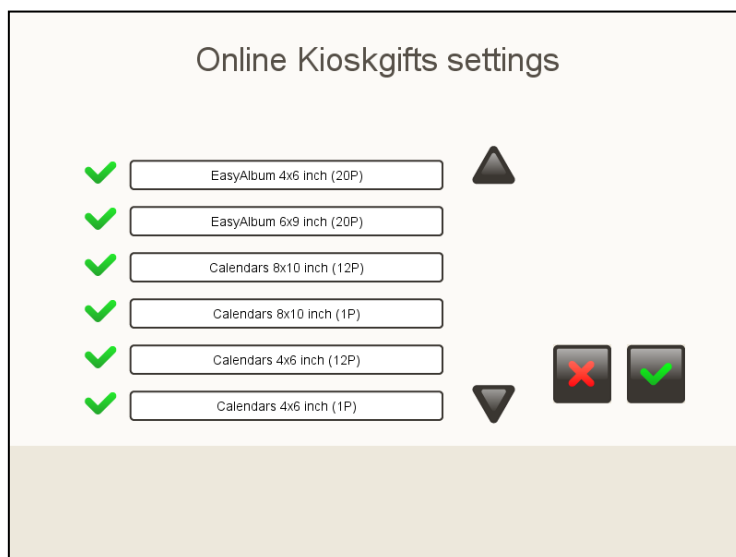
It's possible to select which mosaic poster formats will be available at Mosaic Poster service.



#### NOTE

- The available formats may differ from picture above, according to the available print sizes in the system.

#### 4.2.4.8 ONLINE Kioskgifts.



In the settings section, the list of all the available products is shown. All the different products (easyalbum, greetings, calendars...) are together in the same list. The sole purpose of this screen is to permit each product to be enabled or disabled.

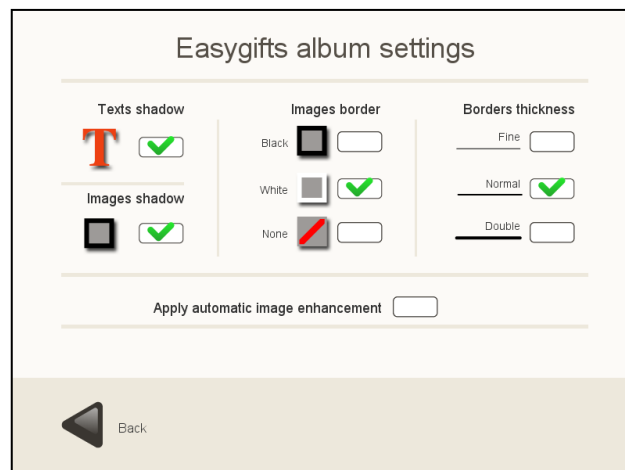
#### 4.2.4.9 Easygifts album

In entering the configuration part, a list of available products is displayed. The operator can change the order in which the products are shown to the end user and activate or deactivate the products one by one.



The buttons on the right of the products list allow you to change the following global service parameters:

1. **General configuration:** allows you to configure general parameters affecting all the products, such as the edges and shadows in the photos, shadowed text and whether the automatic improvement algorithm should be applied to all the photos.



2. **Delete all themes:** this allows you to delete all the decorative themes of the Easygifts album service installed in the system.
3. **Delete a theme:** this allows you to delete themes from the Easygifts album service one by one.
4. **Import designs:** this allows you to import themes of the Easygifts album service from a CD or USB flash drive.
5. **Edit selected product:** this allows you to edit the parameters of the selected product. It is not advisable to change these parameters except for the product name, if this is considered necessary.

### Product settings

---

Id:

Name:

Pages with only one image:

Print format:


Pages:

Minimum images number:




Maximum images number:

Orientation:

Include first page: Yes ☒ No ☐



Product icon



#### NOTE

- The text fonts used in the Easygifts album service will be the ones configured in the Frames and greetings service.

## 4.2.5 Statistics

When this option is enabled in Statistics menu you can see all the orders done in the easyphoto..

It's also possible to export the statistics in order to keep them saved and study them.

- **Today:** You can see all the orders done in the current day.
- **Previous day:** You can see all the orders done in earlier days.
- **Month:** You can see the accumulated statistics in a month, up to 2 years.
- **Years:** You can see the accumulated statistics in a year, up to 3 years.



The screenshot shows the 'Statistics' menu with a list of services and their corresponding products, quantities, and amounts. The 'Today' filter is selected. Below the table are buttons for 'Print', 'Reset', 'Export statistics', and 'Disable'. A 'Back' button is also visible at the bottom left.

Service	Product	Num. products	Prints	Amount
Collage		1	1	£ 0.23
	6x8 inch	1	1	£ 0.23
Compositions		4	4	£ 0.46
	4x6 inch	4	4	£ 0.46
Prints		4	4	£ 4.65
	4x6 inch	3	3	£ 3.45
	6x8 inch	1	1	£ 1.20
Frames & Greetings		1	1	£ 0.78
	4x6 inch	1	1	£ 0.78
Index print		1	1	£ 0.00
	4x6 inch	1	1	£ 0.00

- **Print:** it allows you to print the selected statistics. A text box is displayed that allows you to choose between two printing methods (if they are available): ticket printer or photographic printer. In the second case, the system will try to print in the smallest format allowed by the printer paper. If the equipment is configured in the Order Terminal (O.T.) mode, in the event of selecting the photographic printer as the option, it will be sent to the printing equipment.
- **Reset statistics**



### NOTE

- STATISTICS ARE DISABLED by default. It's necessary to "Enable" them if Statistics registration is needed.

When exporting data to an external storage device, please do the following:

- 1- Insert the storage device. Wait for a few seconds to allow the system recognize the device. If the device is coming with an indicator light, please wait this light to stop flashing.
- 2- Press "Export statistics" and follow the instructions.

When exporting on an external device, several xml files will be shown on it with the statistics, along with the activity records.



The xml files are 'statistics-day-yyyyymmdd.xml', 'statistics-months-yyyy.xml' and 'statistics-year-yyyy.xml', where *yyyyymmdd* is the period. Two copies or periods are saved from the first and second xml types and three copies from the third type.

The information being shown on the screen is also exported to CSV file format and UTF-8 encoding, allowing to open it with MS Excel.

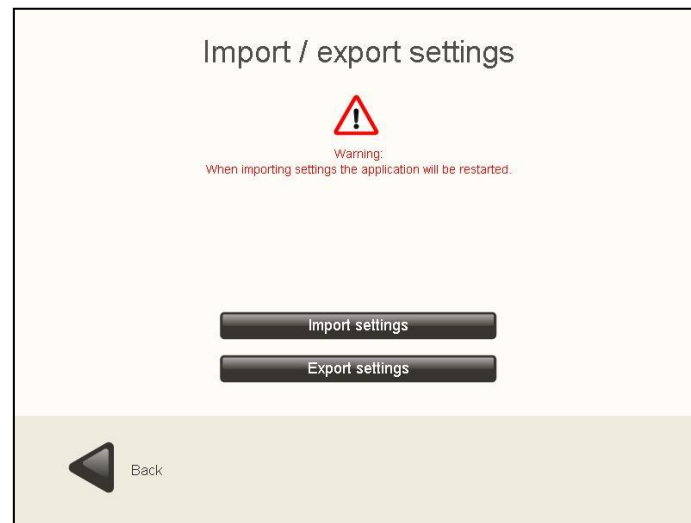
The name of the exported CSV file will vary depending on the selected period: statistics-year-yyyy.csv, statistics-month-yyyy-MM.csv, statistics-day-yyyyMMdd.csv.

If during exportation any statistics data is displayed, then no CSV file will be exported.

On the other hand, an activity-registry.csv file will also be exported, with UTF-8 encoding and compatible with MS Excel, in which the individual data of all the orders and prints are shown. The maximum size of this file is approximately 5MB.

## 4.2.6 Import / export settings

Use this option for importing settings from another system or export settings to another one.



When exporting data to an external USB storage device, please do the following:

- 1- Insert the storage device. Wait for a few seconds to allow the system recognize the device. If the device is coming with an indicator light, please wait this light to stop flashing.
- 2- Press "Export settings" and follow the instructions.



### NOTE

- When importing settings from a different easyphoto system, LOCAL ADDITIONAL LICENSES (like PhotoID) AND STATISTICS WILL BE OVERWRITTEN AND LOST.
- When working as O.T., when pressing the 'Export' button, the settings are stored in the Click5000 system. They can be imported later in any additional O.T.
- The importation files may not be compatible among different software versions

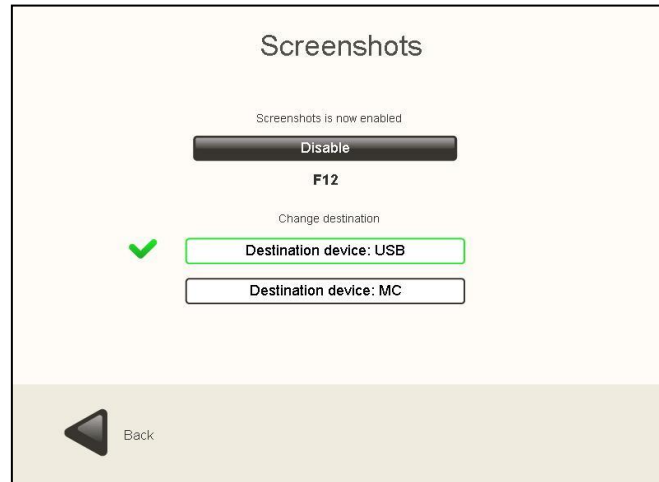
Network parameters will be only exported when the easyphoto is working in any mode (Kiosk, Operator, O.T.) and an USB device is used to save the data.

Network parameters will be only imported when the system is not working as O.T. and an USB pendrive is used to import the data.

## 4.2.7 Screenshots

It's possible to take screenshots of the application and save them into a USB memory device or digital media card. A keyboard attached to the system is needed.

Once the "Screenshots" button is pressed, the following screen is showed:



For enabling this option:



### NOTE

For saving the screenshots correctly the USB devices and memory cards should be inserted before this function is enabled, and wait for some seconds to allow the operating system to recognize the storage device

1. Press the "Enable" button.
2. Choose the destination device.  
Press the "Destination device: USB" button if you want to save the screenshots in the USB.  
Press "Destination device: MC" button if you want to save the screenshots in the memory card.

Now it's possible to take screenshots from any screen. Press 'F12' in the keyboard every time you need to take an screenshot.

Before taking out the storage device:



### NOTE

To extract successfully the storage device where the screenshots are saved, it is highly recommended to access again to the menu "Settings" and disable this function. This action causes the system ejecting the USB storage device properly.

## 5 MT1-ID

The MT1-ID is a limited edition of the standard easyphoto with reduced functionalities. The main use of the system is for PhotoID purposes.

### 5.1 Available services

The MT1-ID offers the following services.

- Prints service
- CD/DVD burn service
- Photo ID service (license is included)

As an option:

- Decopack: Calendar, Mosaic, Greetings, Collage

The Composition service available in the standard easyphoto product is not available in the MT1-ID.

### 5.2 Working modes

The MT1-ID can only work in operator mode. Both Kiosk mode and Order Terminal mode are not supported.

The screenshot shows the 'Main' menu of the MT1-ID system. It features several buttons and settings:

- Mode Selection:** Three buttons for 'Kiosk mode', 'Operator mode', and 'Order Terminal mode'. 'Operator mode' is highlighted.
- Language and Time:** Buttons for 'Kiosk language' and 'Date / Time'.
- System Settings:** Three buttons: 'Show available languages at first screen', 'Show disclaimer', and 'Use passwords for order validation'.
- Country Selection:** A 'Country' button followed by a list of settings: 'Country: UNITED KINGDOM', 'Currency: £', 'Measurement unit: inch', 'Currency symbol position: left', and 'VAT information: VAT included'.
- Status:** A green checkmark icon next to a box labeled 'Ticket printer enabled'.
- Navigation:** A 'Back' button with a left-pointing arrow at the bottom left.

### 5.3 Printer model

Supported printer model is the CPD70DW-U.

## 6 Recovery USB and easyphoto backups

It's strongly recommended to make a safe copy of the system after a first setup and also periodically. In the event of a system malfunction, it could be very helpful in recovering normal operation.

For that purpose, the equipment includes a DVD, the 'Recovery USB creator' which is used to generate a recovery tool in a USB drive.

A USB drive with a capacity of 4GB is required, together with a PC with a DVD reader and inputs compatible with USB devices. In some cases, the MT1 equipment can be used if it has an internal or external DVD reader.

After executing the process described below, the USB drive will be converted into the system recovery tool and maintenance tool for installing software updates.



### NOTE

All the information in the USB drive will be deleted during the creation of the recovery tool.

### 6.1 Creation of the recovery tool in a USB drive

To use the USB device as a recovery tool proceed as follows:

1. Switch on the computer (PC) and insert the DVD immediately, so that the system is booted exceptionally from the DVD itself. Do not connect the USB drive yet.
2. Once the boot process has ended, the equipment calibration screen will be displayed. If the PC is not an MT1 and has a keyboard and mouse, the ESC key can be used to exit the process. If it is an MT1 and the touch screen must be used, press with your finger on each of the green zones that appear in succession until the process has been completed.



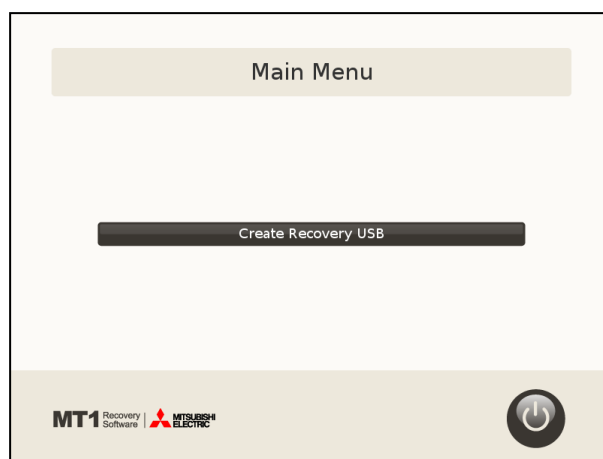
### NOTE

If the computer (PC) cannot be booted correctly through the DVD, check that the equipment allows you to boot it from the DVD. Another possibility is that the PC is not compatible with the DVD operating system. Use another PC that can be booted through the DVD.

- The language selection screen will then appear, like the one shown in the illustration.



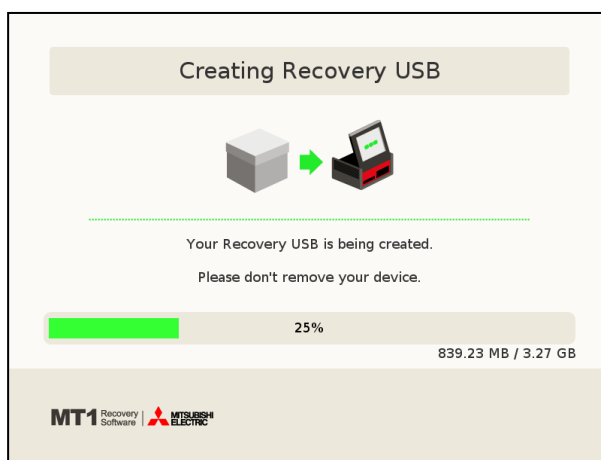
- After selecting the language the following screen will appear. Press the button in the centre to create the recovery tool in the USB drive.



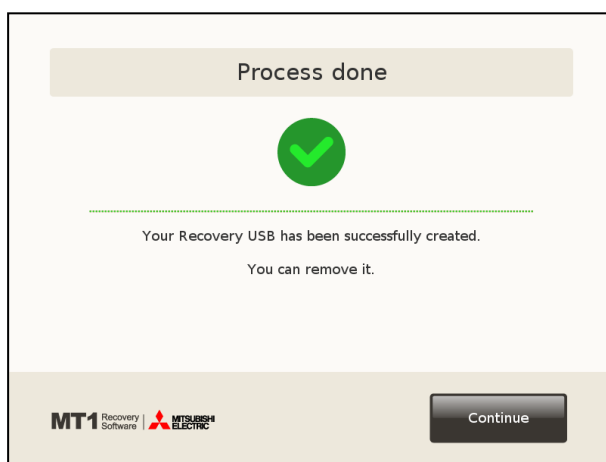
- The next step is a confirmation question. Accept in order to proceed to the next screen where you will be asked to insert the USB device in any available connector.



6. Then the USB drive writing process will start. This may last for several minutes.



7. When the process has ended press the button in the bottom right-hand corner of the screen to return the equipment to the initial screen.



8. To switch off the equipment press the off button on the right side of the initial menu.

**IMPORTANT:** DO NOT REMOVE THE DVD UNTIL THE EQUIPMENT HAS BEEN SWITCHED OFF.

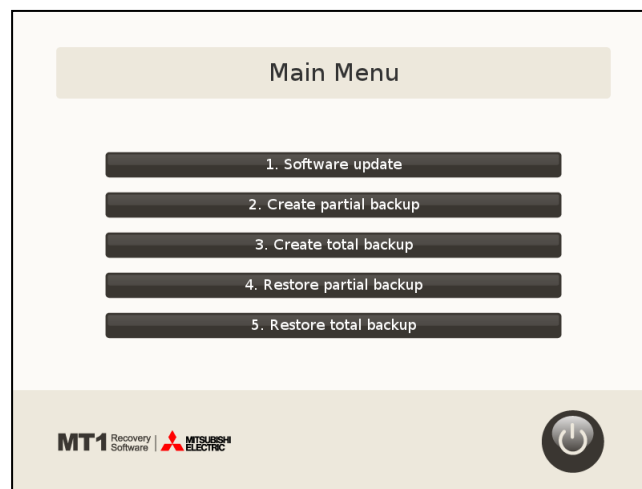
If you do this by mistake, ignore the messages that appear on screen and switch the equipment off completely. At any event the process will have been completed correctly.

## 6.2 Using the recovery tool

The USB tool created in accordance with the above section can be used to carry out maintenance tasks. Insert the USB drive, preferably at the rear part of the MT1 equipment, and it will start up.

After a few seconds the system will be booted from the USB and the touch screen calibration tool will be displayed. Press the different points that appear at the corners of the screen with your finger to complete this process correctly.

Then the main menu of the recovery tool will appear.



There is a choice of various options:

- Software update.
- Create partial backup.
- Create total backup.
- Restore partial backup.
- Restore total backup.
- Shutdown (button located at the bottom on the right)



### NOTE

- **IMPORTANT:** After configuring the software for the first time, be sure to create a total backup. The default backup copy supplied with the Recovery USB may be an older release than the content of the MT1 equipment supplied by the factory.
- It is advisable to make partial backups after making updates to the equipment or at certain time intervals.
- Two USB drives can be used simultaneously in the equipment, one as a booting and recovery tool and the other as a storage device or as the source of the update data.



### 6.2.1 Software update

This option allows updating the software of easyphoto to a new software version, or installing special update packages.



#### NOTE

It is very important to create a backup before updating the process to avoid losing parameters of the configuration, if any backup was not performed before.

When this option is chosen, the user is requested to insert an USB memory device, and the system detects if there is an available software update in the memory unit, showing the name of the file and requesting confirmation for the update.

Once the update is finished correctly, the system informs about the success of the operation.

### 6.2.2 Create Partial backup

This option allows creating a Partial Backup of the software in the memory device. The partial backup saves everything of the system except the operating system files. It's faster than creating a Total Backup, and the resulting file takes less storage space than the one created after a Total Backup, also.

Once the backup is finished correctly, the system informs about the success of the operation.



#### NOTE

To make partial backup copies, it is advisable to use a USB drive that is different from the one used as the recovery device, due to the memory space required for the saved file. It is best to use a USB drive with a free space of 4GB.

### 6.2.3 Create Total Backup

This option allows creating a Total Backup of the software in the memory device. It's needed a high capacity USB storage device, with a minimum of 4GB free memory.



#### NOTE

- If using the same USB as the recovery tool, the default backup copy supplied with it will be overwritten.
- After installing and setting up the system or after any Software Update operation, it is highly recommended to create a Total Backup.
- It is advisable to store the backup files in a safe place.

Once the backup is finished correctly, the system informs about the success of the operation.

If the total backup has not been successful, it will be notified.

### 6.2.4 Restore Partial Backup

This option allows restoring a Partial Backup of the software. An USB device with the required backup file is needed.



#### NOTE

Before initiating the restore the user is informed, that this option will cause the losing of current system information.

After confirming the restore partial backup, the system detects the restoring file in the USB device, showing the name of the file and requesting confirmation to continue with the process.

The restore partial backup starts once the process has been confirmed previously.

Once the process is finished correctly, the system informs about the success of the operation.

If the restore partial backup has not been successful, it will be notified.

### 6.2.5 Restore Total Backup

This option allows restoring a Total Backup of the software. An USB device with the required backup file is needed.



#### NOTE

Before initiating the restore the user is informed, that this will cause the losing of current system information.

After confirming the restore total backup, the system detects the restoring file in the USB device, showing the name of the installation file and requesting confirmation for continuing with the process.

The restore total backup starts once the process has been confirmed previously.

Once the process is finished correctly, the system informs about the success of the operation.

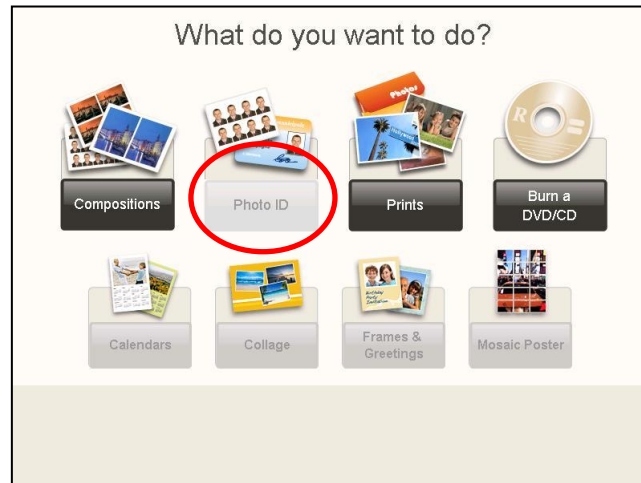
If the restore total backup has not been successful, it will be notified.

### 6.2.6 Shutdown

This option shuts down the system properly. Please use always this option to shut down the system after performing any of the previous options of the menu. Do not remove the USB recovery device before the equipment is switched off.

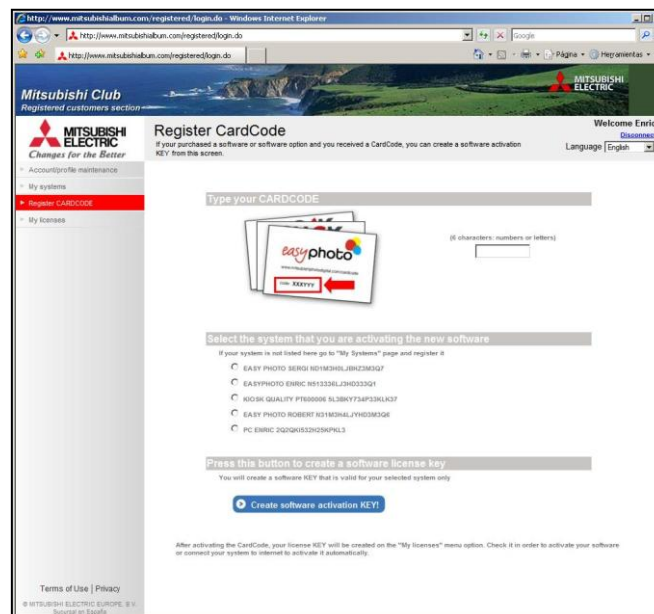
## 7 ACTIVATING ADDITIONAL LICENSES

In some product versions of easyphoto it's required to activate additional licenses in order to access the whole functionalities of the system. While the license is not active, the service will be visible in the main screen but not accessible, with the button disabled.



### 7.1 Register and Getting the Activation KEY

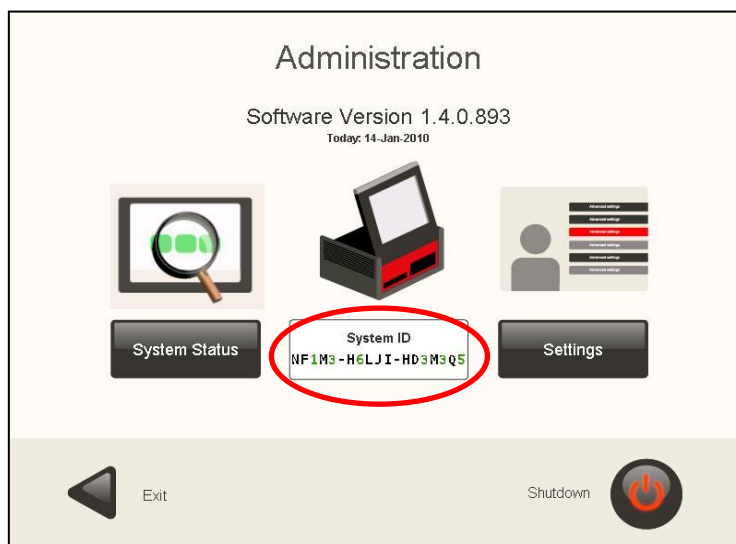
You need to be a registered user to activate your licenses. Please connect to <http://www.mitsubishiphoto.com/cardcode> and follow the instructions to register and activate the licenses.



A CardCode is supplied when a new license (service) is purchased. Please ask your dealer for a CardCode in order to activate additional licenses.

You will need the CardCode number and also your SYSTEM\_ID during the activation.

The SYSTEM\_ID is a unique code that identifies your system. It's shown in the Administration screen of the easyphoto application.



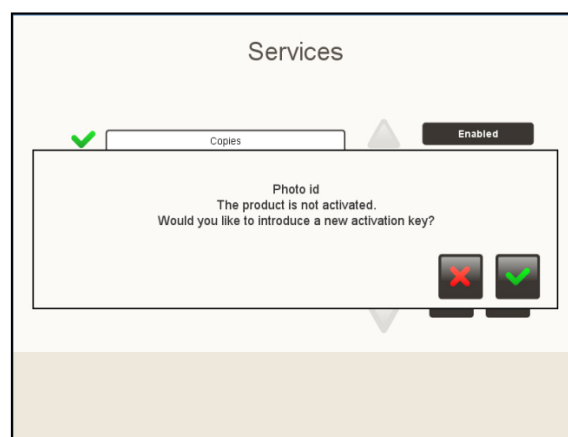
Once you have your Activation KEY, you can proceed to activate your additional license.

## 7.2 Activating licenses in the easyphoto application.

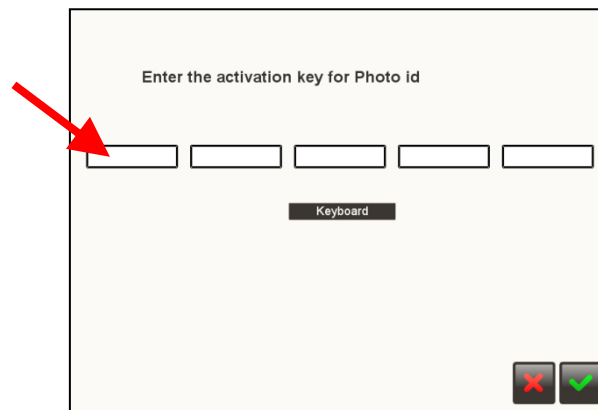
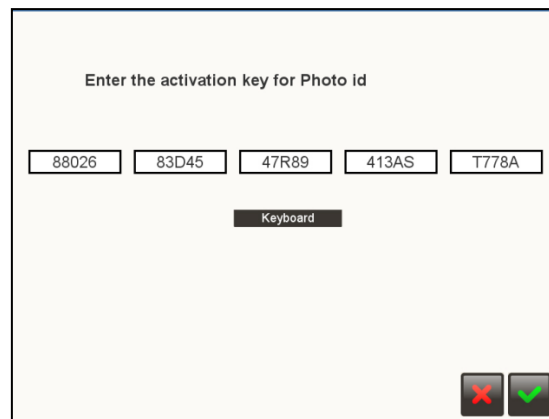
It's necessary to go to Services screen in settings of easyphoto in order to enter the Activation KEY. Once in the screen, the desired service should be chosen.



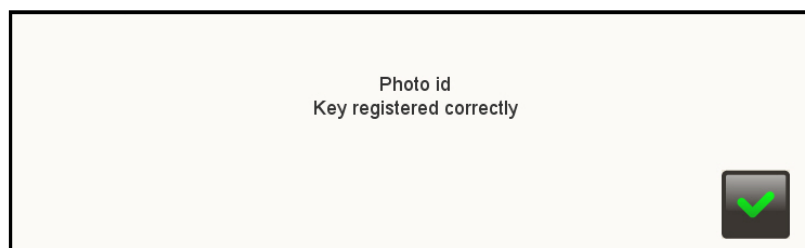
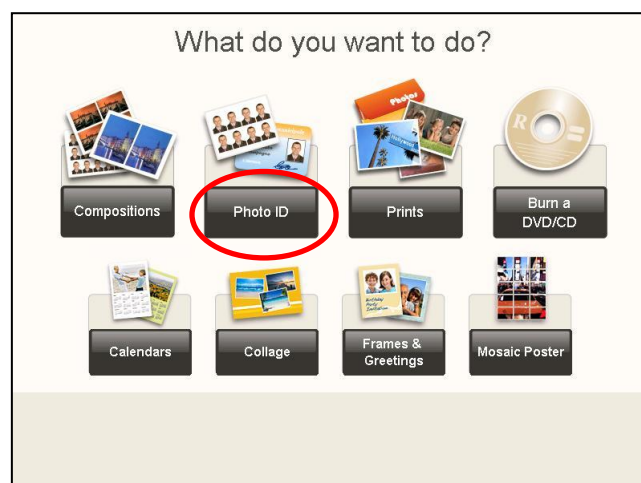
As the service is not licensed, this message is shown in the screen.



When accepted, the user is requested to enter the activation KEY. In order to enter the values, screen keyboard must be used. It's necessary to select the destination case before pressing keyboard button.

Once the Activation Key has been entered correctly, the service will be activated.

## 8 TICKET PRINTER INSTALLATION (OPTIONAL)

### **i** NOTE

Please follow only these steps if you have connected correctly the Star TSP100 ticket printer and it's not printing any ticket when the system should do.

Before connecting the USB cable of the ticket printer to the Easyphoto terminal, please follow these steps:

1. Switch your ticket printer off and open the paper cover.
2. Switch the printer on, keeping the "FEED" button pressed until the LED starts to flash rapidly (for about 10 seconds).
3. Close the cover and release the "FEED" button.
4. One of these LED starts flashing:
  - Power (yellow-LED)
  - Error (red-LED)
5. Push the "FEED" button in order that ERROR LED keeps flashing.
6. Open the cover and press once the "FEED" button to confirm the change.
7. The ticket printer LED starts to cycle slowly to confirm that the printer has been modified.
8. Switch the ticket printer off and on again.

If after doing this, the printer is working but the paper is not being cut, please add the following steps:

1. Switch off the ticket printer.
2. Open the cover and press FEED button while Power ON
2. Press FEED button approx. 5 sec. and wait for both LED (FEED and ERROR) blinking by return.
3. Depress FEED then POWER LED ON, and ERROR LED OFF
4. Press FEED then, POWER LED OFF, and ERROR LED ON
5. Close cover then POWER ON blinking and ERROR LED ON
6. Switch OFF

## 9 CONTACT

### France

Mitsubishi Electric Europe B.V.  
25 Boulevard des Bouvets, 92741  
Nanterre Cedex,  
France  
Tel (+33) 1 55 68 55 00  
Fax. (+33) 1 55 68 57 31

### Germany

Mitsubishi Electric Europe B.V.  
Gothaer Str. 8, Ratingen / P.O.  
Box 1548  
40835 Ratingen  
Germany  
Tel (+49) 2120 486 9250  
Fax. (+49) 2102 486 7320

### Italy

Mitsubishi Electric Europe B.V.  
Centro Dir. Colleoni, Pal. Perseo –  
Ingr.2 Via Paracelso 12,  
20041 Agrate B. (Milano)  
Italy  
Tel (+39) 039 60531  
Fax. (+39) 0396053214

### Benelux

Mitsubishi Electric Benelux  
Nijverheidsweg 23A, 3641 RP  
Mijdrecht / Postbus 222  
3640 AE Mijdrecht  
Netherlands  
Tel (+31) 297 282461  
Fax. (+31) 297 283936

### Spain

Mitsubishi Electric Europe B.V.  
Carretera de Rubi 76-80, Apartado  
de correos 420,  
08190 Sant Cugat del Valles  
(Barcelona) Spain  
Tel (+34) 93 565 31 54  
Fax. (+34) 93 589 43 88

### Scandinavia

Mitsubishi Electric Scandinavia  
Hammarbacken 14, P.O. Box 750  
SE-191 27 Sollentuna,  
Sweden  
Tel (+46) 8 625 10 00  
Fax. (+46) 8 625 10 36

### UK

Mitsubishi Electric Europe B.V.  
Travellers Lane, Hatfield Herts  
AL10 8XB,  
U.K.  
Tel (+44) 1707 278684  
Fax. (+44) 1707 278541

### Russia

Mitsubishi Electric Europe B.V.  
Moscow Representative Office 52,  
bldg. 5, Kosmodamianskaya Nab.  
113054, Moscow,  
Russia  
Tel (+7) 095 721-2070  
Fax. (+7) 095 721- 2071