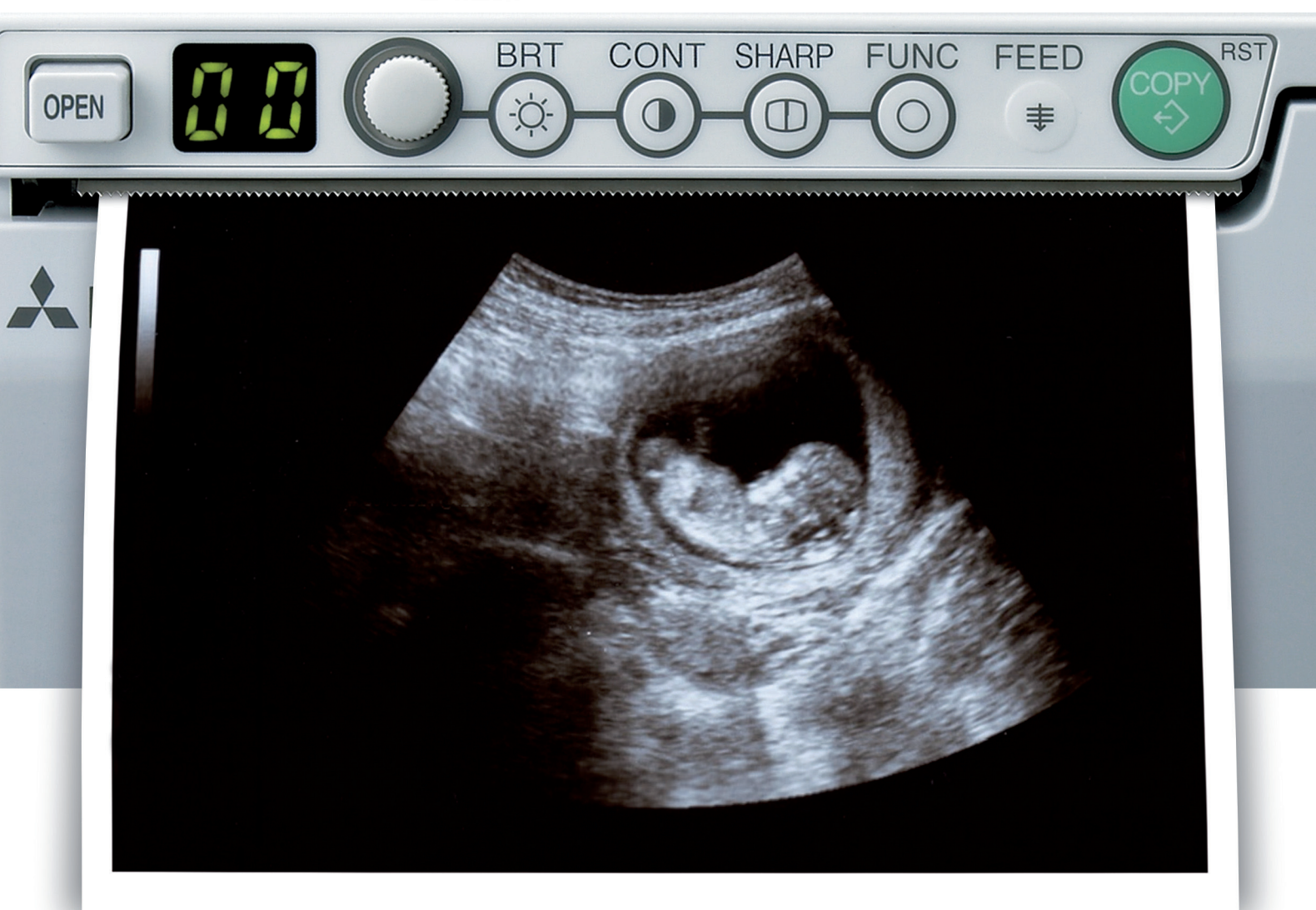


“Mitsubishi Electric Thermal Paper” the best choice for “Mitsubishi Printers”



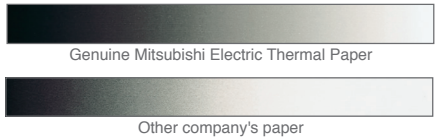
**Unevenness, static prevention, gloss, gradation, storage stability...
The difference in quality is clear on a variety of points.**

Reasons to choose “Mitsubishi electric thermal paper”

Mitsubishi genuine products are developed specifically for Mitsubishi printers.
Use of genuine products is recommended in order to ensure printers perform at full capacity and to allow for printer maintenance and stable use.

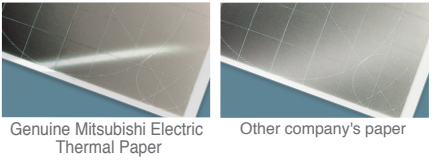
Better Gradation

Mitsubishi genuine products are optimally designed to produce the best image quality on Mitsubishi printers, which results in high quality grayscale through smooth black to white transition.



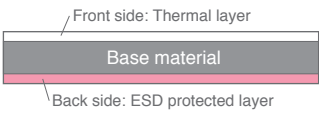
Beautiful gloss and crystal clear

The high glossy finish of Mitsubishi thermal papers create a good-looking images and texts are clearly readable.



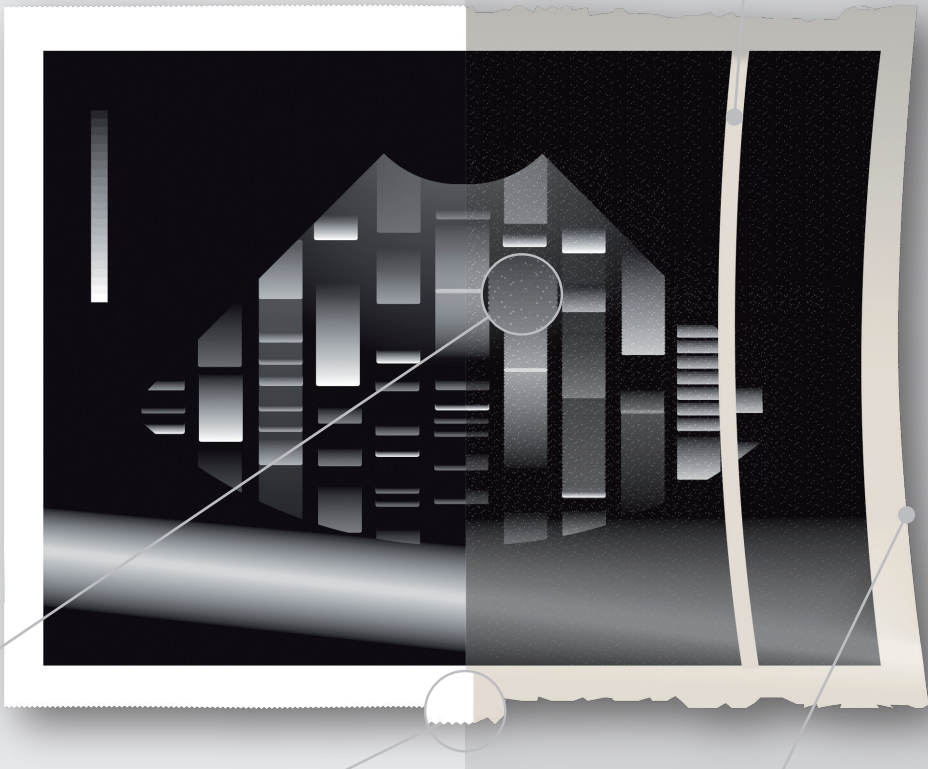
Static Prevention

Static damages thermal heads which results in white lines occurring at the damaged locations. All of Mitsubishi thermal papers are designed with anti-static layer. This reduces damage to the printer thermal head surface cause by electro-static.



MITSUBISHI ELECTRIC THERMAL PAPER

OTHER COMPANY’S PAPER



Prevent “white spots”

Using non-recommended paper from other companies may result poor image quality due to white dots and wasted re-prints. Printed image with white spots can mis-lead evaluation result.

Clean and easy to “cut”

Cutting the Mitsubishi thermal paper are easy and clean.

Paper Curl

Mitsubishi genuine thermal papers are designed to minimize the curling due to heat during printing mainly on very dark images.

The above do not necessarily occur with all products from all other companies.

Mitsubishi Electric Thermal Paper



PAPER SPECIFICATIONS

	Type	Rolls /Box	Box /Carton	Lenght (m)	Max.Density (OD)	Thickness (um, typ)	Color	Whiteness
KP61B-CE	Standard	4	20	20	1.25 or more	80	blue tone	Min. 75%
KP63HM-CE	High-density	4	20	18	1.7 or more	80	sepia tone	Min. 78%
KP65HM-CE	High-density	4	20	20	1.7 or more	80	blue tone	Min. 71%
KP91HG-CE	High-gradation	4	20	18	1.7 or more	80	blue tone	Min. 71%
K95HG	High-gradation	5	20	18	1.9 or more	82	neutral	Min. 73%

PRINTER SETTINGS

		P93 series			P95 series			
	Type	Brightness	Contrast	Gamma	Brightness	Contrast	Sharpness	Gamma
KP61B-CE	Standard	0	-1	4	0	0	3	4
KP63HM-CE	High-density	0	0	2 or 5	0	0	3	2
KP65HM-CE	High-density	0	0	5	0	0	3	5
KP91HG-CE	High-gradation	0	0	5	0	0	3	5
K95HG	High-gradation	0	0	1	0	0	3	2