

Operator guide



V1.0

How to customize your event...



❑ **Customize your SmartPhotoPrinter to create cool and amazing photo prints of the event (Based on “easyprint” service)**

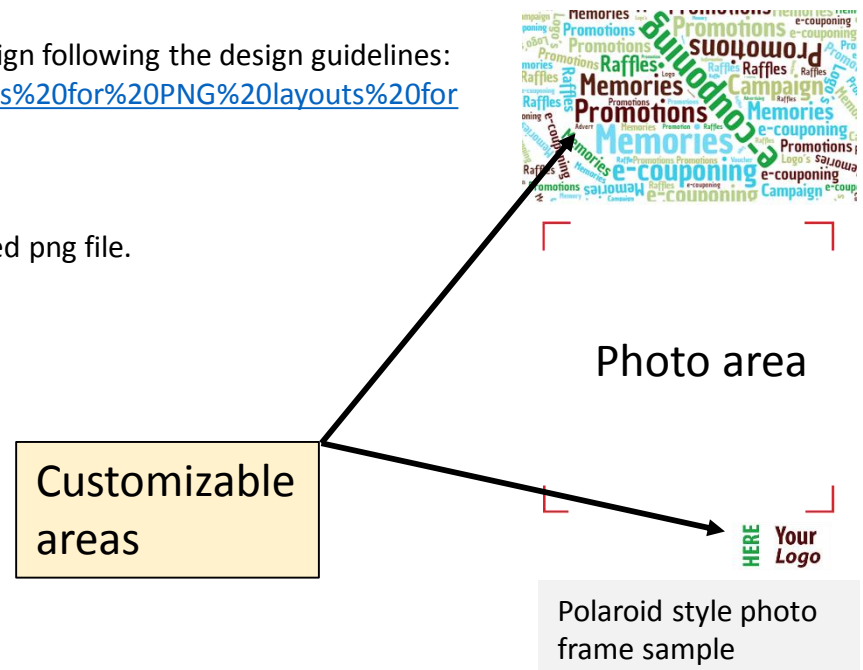
- 1 Design a customized photo frame
- 2 Connect your Smartphone to the SmartPhotoPrinter
- 3 Load the photo frame into the SmartPhotoPrinter
- 4 Apply the photo frame to the “easyprint” application

1 Design a customized photo frame

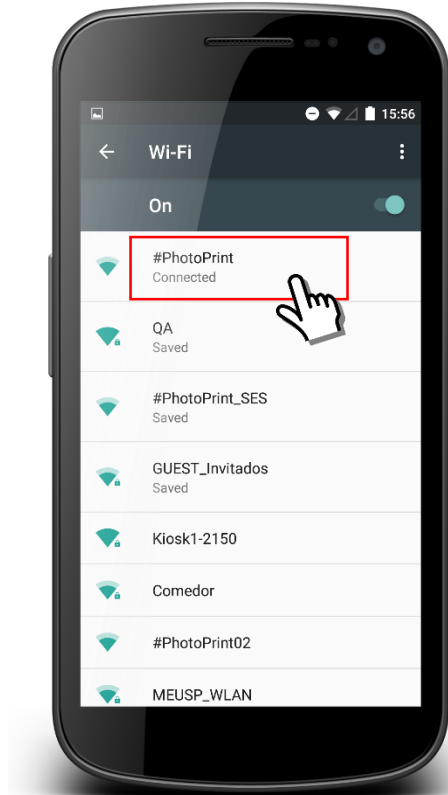
At messec.net you will find different resources to support you to design photo frame patterns to customize your event:
<http://www.messec.net/index.php?target=list&view=5>

Here you have a simple way to create a customized Polaroid style photo frame:

- 1 Download the “SmartPhotoPrinter_frames_layouts.zip” file from:
<http://www.messec.net/index.php?target=detail&id=847> and extract the content
- 2 Select one of the Polaroid style photo frames samples downloaded and open it into your png image editor (Photoshop, GIMP, ...)
- 3 Replace the customizable areas by your own design following the design guidelines:
http://www.messec.net/repository/Specifications%20for%20PNG%20layouts%20for%20easyprint%20web%20app_2016-11-28%2010_57_46/decoration_png_design.pdf
- 4 Save the customized contents into a new renamed png file.

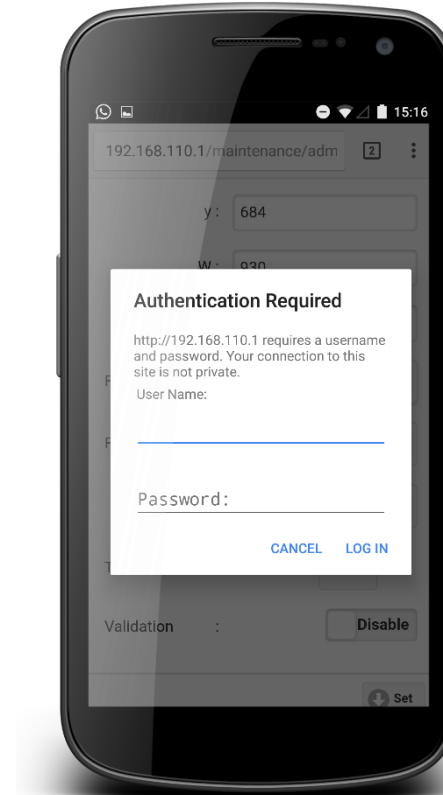


2 Connect your Smartphone to the SmartPhotoPrinter



1

Go to your Smartphone WiFi settings and select the SmartPhotoPrinter SSID: **#PhotoPrint**



2

Launch the browser (Chrome, Safari, Opera, ...) and open the SmartPhotoPrinter maintenance web: <http://192.168.110.1/maintenance/admin>

3 Load the photo frame into the SmartPhotoPrinter 1/2

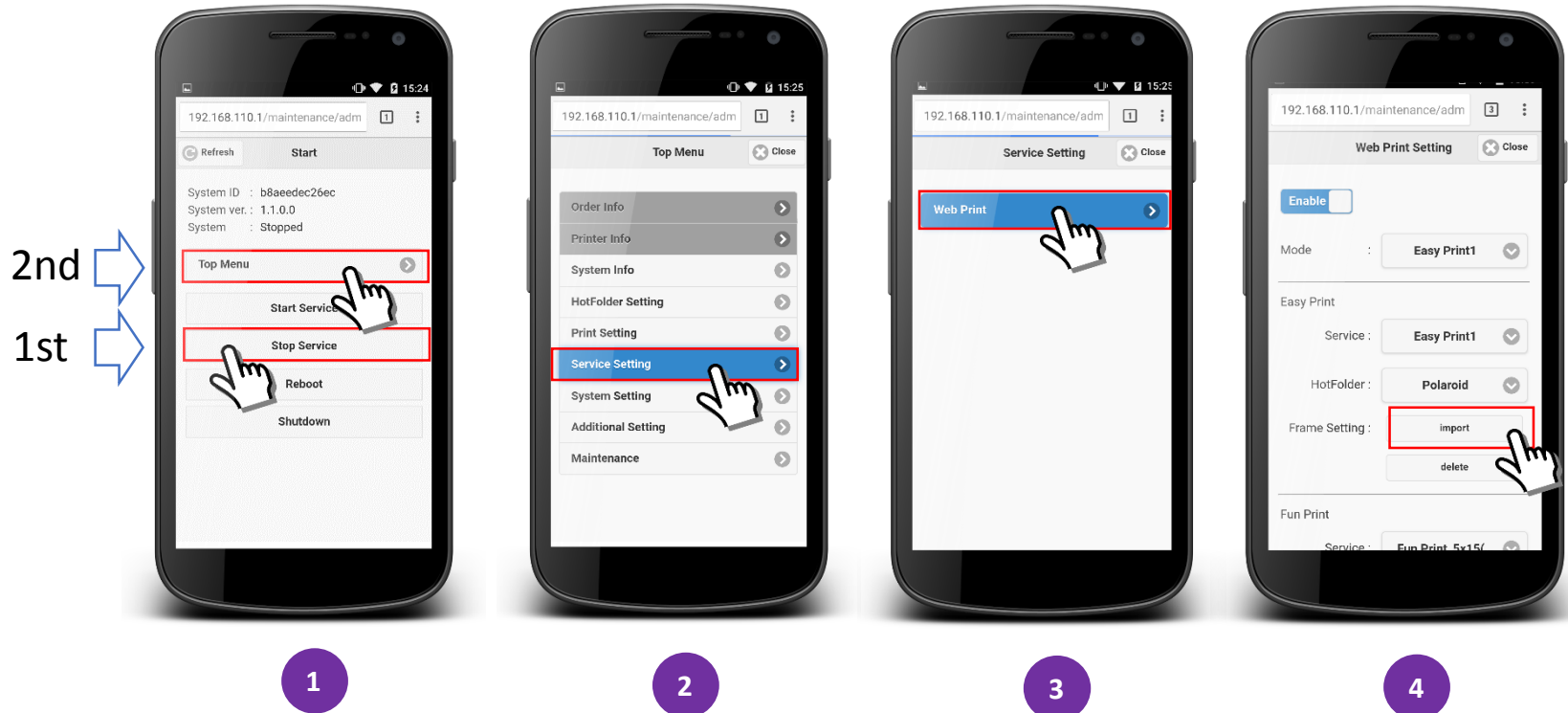
1.- Copy the “.png” file in the following route of a USB pen drive storage device:

\Smartp\easyprint\frame*.png

2.- Insert the USB pen drive in one of the SmartPhotoPrinter’s back USB port

3.- Open the SmartPhotoPrinter maintenance web, Stop the services, select Top Menu, then Service Setting, Web Print

4.- Import the frame.

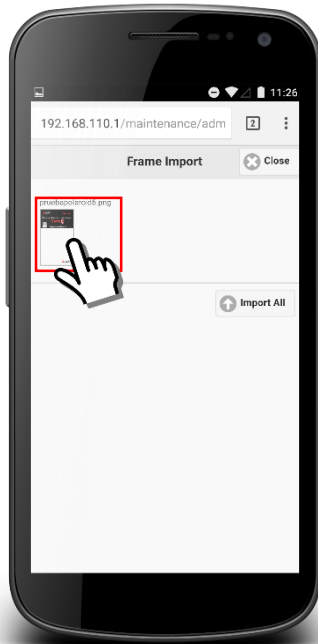


3 Load the photo frame into the SmartPhotoPrinter 2/2

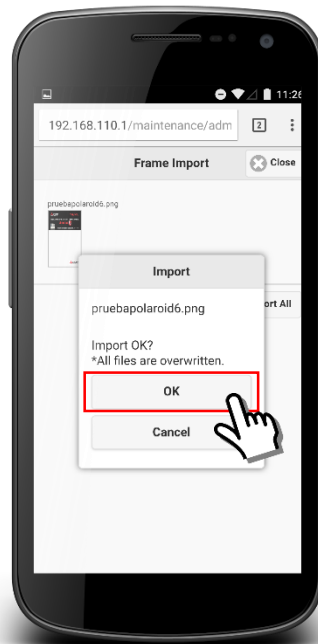
5.- Select the frame layout to be loaded into the SmartPhotoPrinter

6.- Click “OK” button to confirm the file name selected.

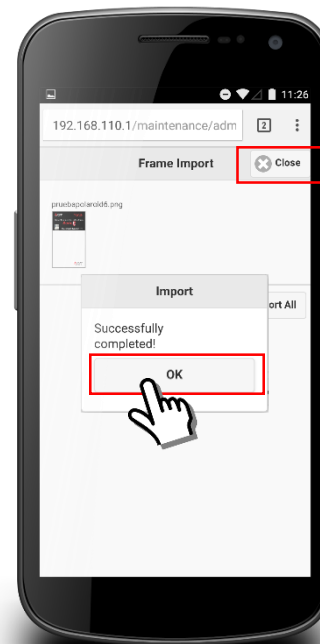
7.- Click “OK” button and then “Close” button to return to Top Menu



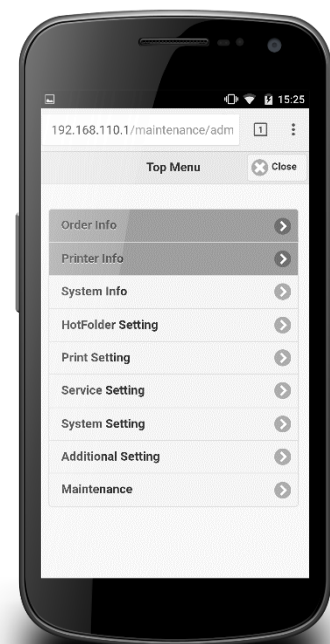
5



6

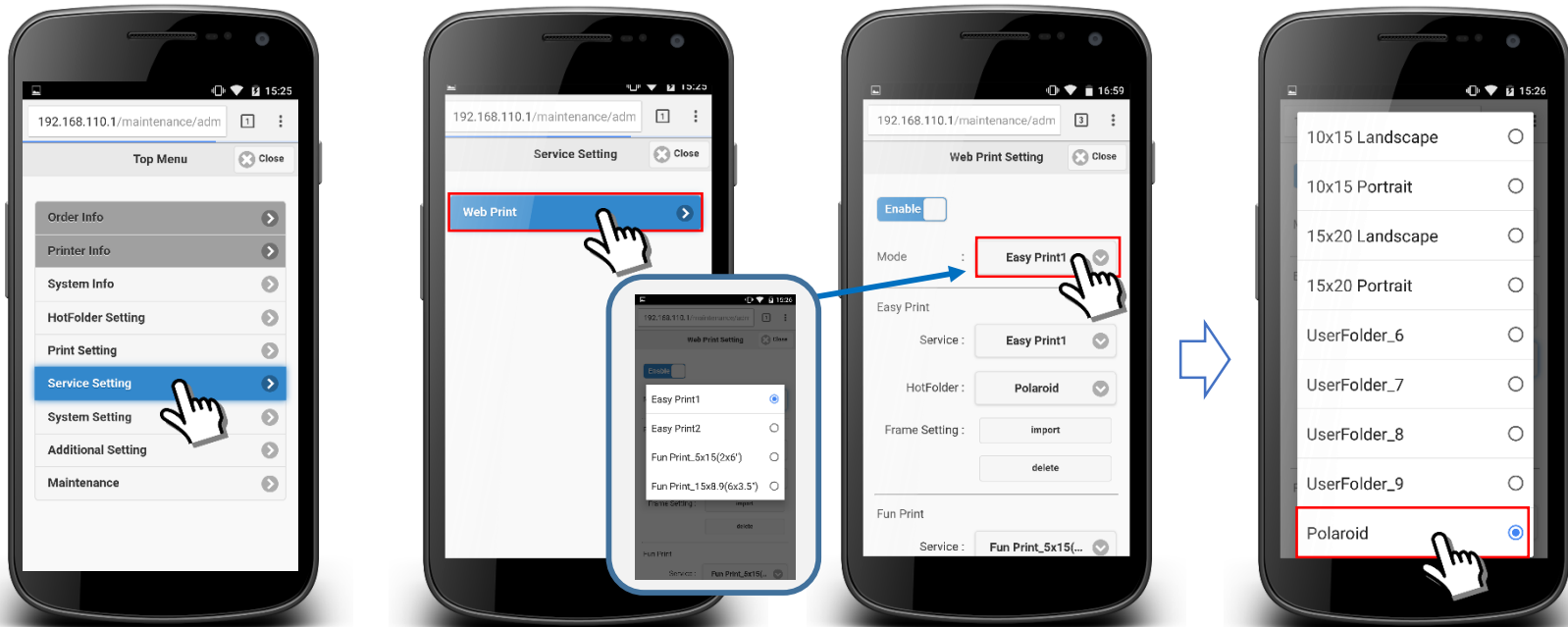


7



8

4 Apply the customized photo frame to the easyprint application 1/4



1

Select Service setting.

2

Click on “Web Print” button.

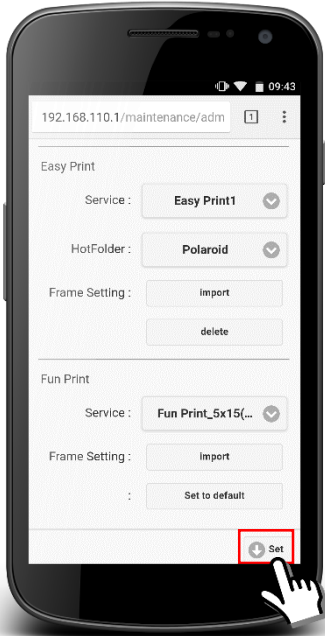
3

Select “Easy print1” mode.
Then, Select the Hot Folder that the Service will use.

4

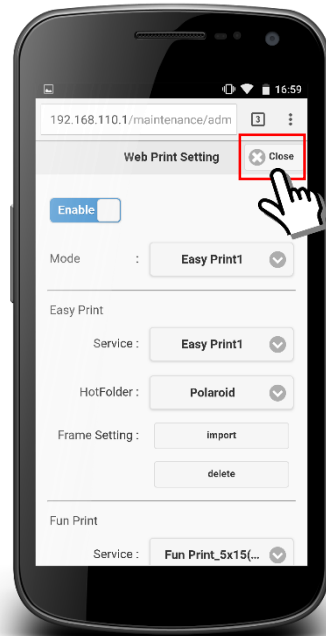
For example, **Polaroid**. This guide uses Polaroid style format as an example.

4 Apply the customized photo frame to the easyprint application 2/4



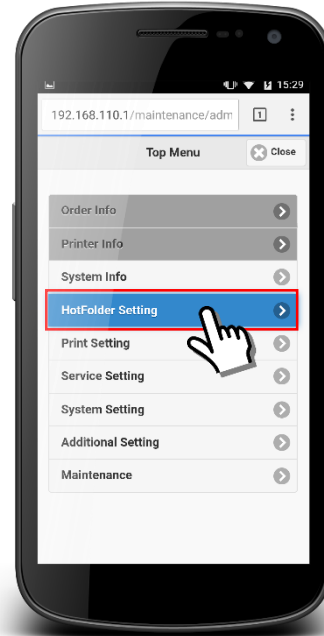
5

Scroll up the web and click on "Set" to apply the changes.



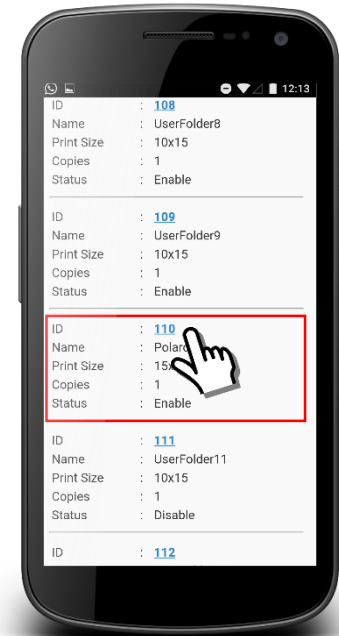
6

Scroll down the web and click on "Close" until return to **Top Menu**



7

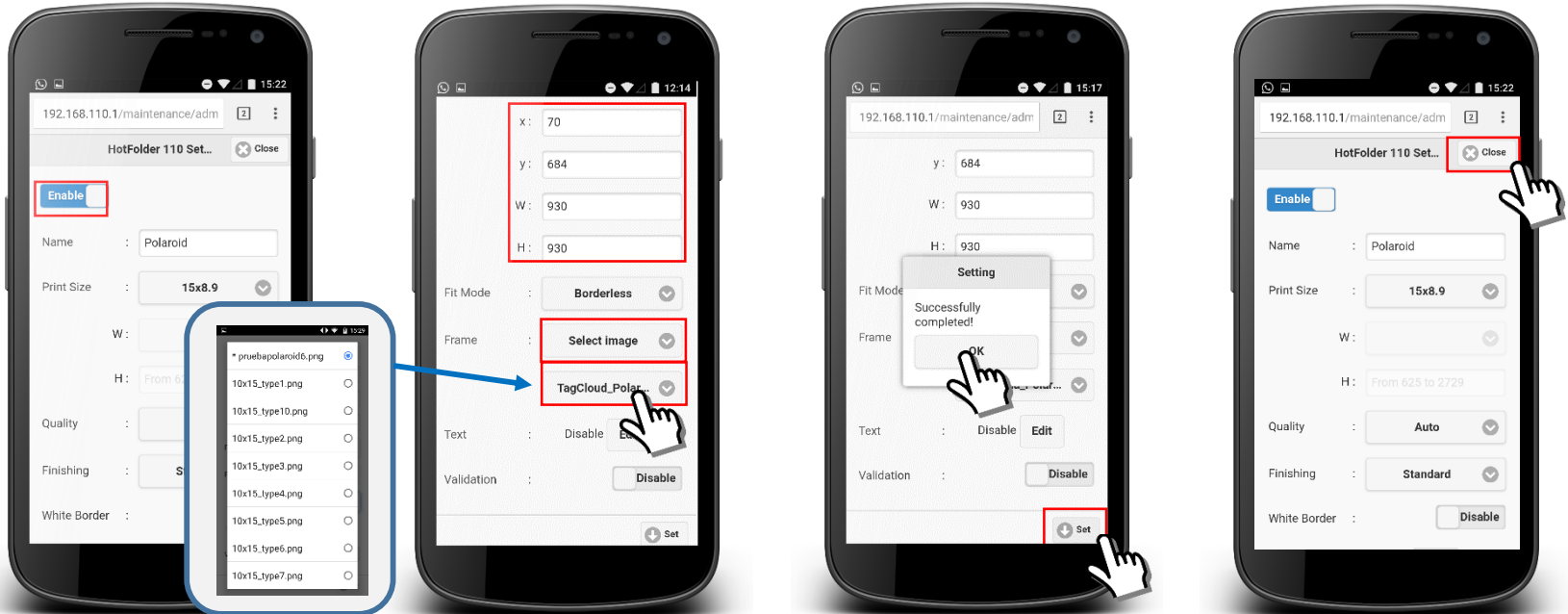
Click on "HotFolder Setting" to access the folder structure



8

Click on the ID of the folder that has been selected for the Selected mode (Ex: "110" Polaroid).

4 Apply the customized photo frame to the easyprint application 3/4



9

Check if the folder is enabled.
Set the values as shown in the image or customize them.

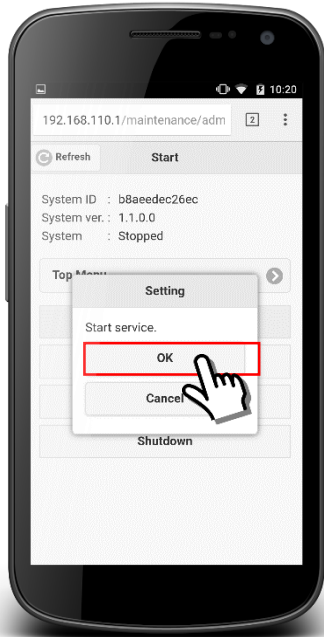
10

Scroll up the page, select the previously loaded frame and set the X, Y, Width and Height data for the area where the photo will be displayed. (Values shown in the picture are for Polaroid style format)
Click "Set" to save and apply the changes.

11

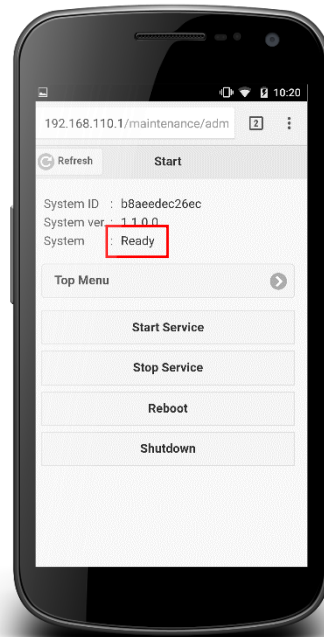
Scroll down the web and click on "Close" until return to the **Start** page

4 Apply the customized photo frame to the easyprint application 4/4



12

Click on "Start Service" and click "OK" on the dialogue window



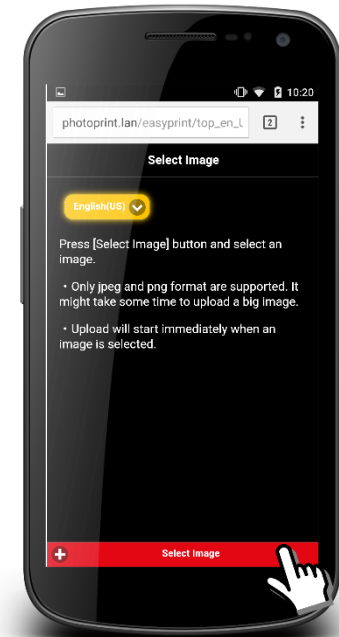
13

Check that the System is **Ready**



14

Read the usage notes, check the box at the end of the text and click the "Start" button.



15

Select an image and print !!!

- <http://www.mitsubishielectric-printing.com>
- <http://www.messec.net>