



# Introducing **PSevents**

## Product Overview

With **PhotoSuite Events** software you can automatically capture, edit, print, and share any event with ease. The real beauty of **PS Events** software is that it can be used by up to five photographers at a time and images can be stored in individual hot folders. This feature is particularly useful at events where activities are zoned in different areas, such as trade shows.

**PS Events** software also allows photographers to increase their business by offering untapped new services. To satisfy the growing demand for instant social photography, which can be shared across social media or printed at a moment's notice, Mitsubishi Electric has created **PhotoSuite Events**. Capture life as it happens and capitalise on a growing social phenomenon.

## Main Features

- Up to 5 hot folders for printing (Wi-fi cameras, Local Units or Network Folders)
- Add text to images
- Add frames and logos (PNG files)
- Picture adjustments such as zoom, crop and colour
- Add filters such as black and white and sepia tints
- Multiple layout templates
- Upload pictures to Facebook (Session)
- Direct download and printing from #Hashtag - (Instagram and Twitter)
- Print multiple formats: 4x6", 5x7", 6x8" and 8x10"
- PhotoSuite Events is available as a 5 day trial
- For more information visit:  
[www.mitsubishielectric-printing.com/photosuite/ps-events](http://www.mitsubishielectric-printing.com/photosuite/ps-events)

## Why Use PS Events?



### BRANDS



### WEDDINGS



### FESTIVALS



### LEISURE / TOURIST LOCATIONS



## How does it Work?



PS Events software is able to process incoming images and store them in up to 5 different 'hot' folders.

These folders can also process jobs immediately, including logos, text and adjustments, pre-configured for the daily session.



All the incoming images from devices or hashtags can be printed automatically and without the need to manage the process, and always to the highest possible finish!

**PSevents**

### #Hashtag

This great feature allows the photographer to set up a #Hashtag of their choice and then promote the #Hashtag throughout the event they are working.

During the course of the event anyone can take pictures on their phones or devices and post these to the #Hashtag, allowing others to view and print these photographs at a later date.

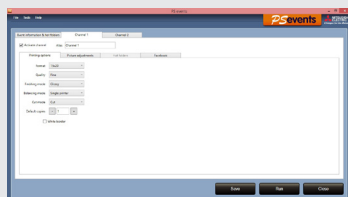


Photographs can be taken on any camera device, then wirelessly transferred to an external computer with PSEvents software for archiving as a session or for automatic printing.

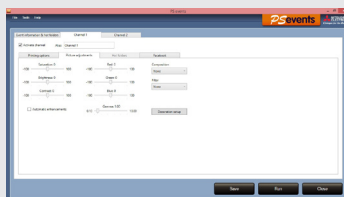


The PS Events Suite also supports the delivery of these images back to devices in digital format once they have been edited by the photographer.

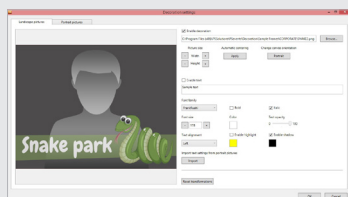
## Simple to Use



**Step 1**



**Step 2**



**Step 3**



**Step 4**

## Final Result



### TECHNICAL SPECIFICATIONS

|   |   |
|---|---|
| <b>Installation</b>                     | Quick and easy (option to download a 5 day trial)   |
| <b>Operating System</b>                 | Windows Vista, Windows 7 (32/64 bit), Windows 8 (32/64 bit)   |
| <b>Software Protection</b>              | Software protection using electronic code<br>Hardware protection optional (dongle sold separately)          |
| <b>Compatible Printers</b>              | Mitsubishi CP-K60DW-S, CP-D80DW-S, CP-D70DW-S, CP-D707DW-S, CP-D80DW, CP-D70DW, CP-D707DW, CP-3800DW        |
| <b>Print Job Management</b>             | PS Event has a powerful print module for job management<br>Order and print status available in print module |
| <b>Download/Registration/Activation</b> | Online activation process   |

### Mitsubishi Electric Europe Contacts

|                       |  |                        |
|-----------------------|--|------------------------|
| <b>U.K Branch</b>     | Travellers Lane, Hatfield, Herts, AL10 8XB                           | + 44 (1707) 276100     |
| <b>Benelux Branch</b> | Nijverheidsweg 23A, 3641 RP, Mijdrecht, The Netherlands              | + 31 (297) 282461      |
| <b>German Branch</b>  | Gothaer Strasse 8, 40880 Ratingen, Germany                           | + 49 (0) 2102 486 9250 |
| <b>Spanish Branch</b> | Carretera de Rubi 76-80 08190 Sant Cugat del Valls, Barcelona, Spain | + 34 (93) 565-3131     |